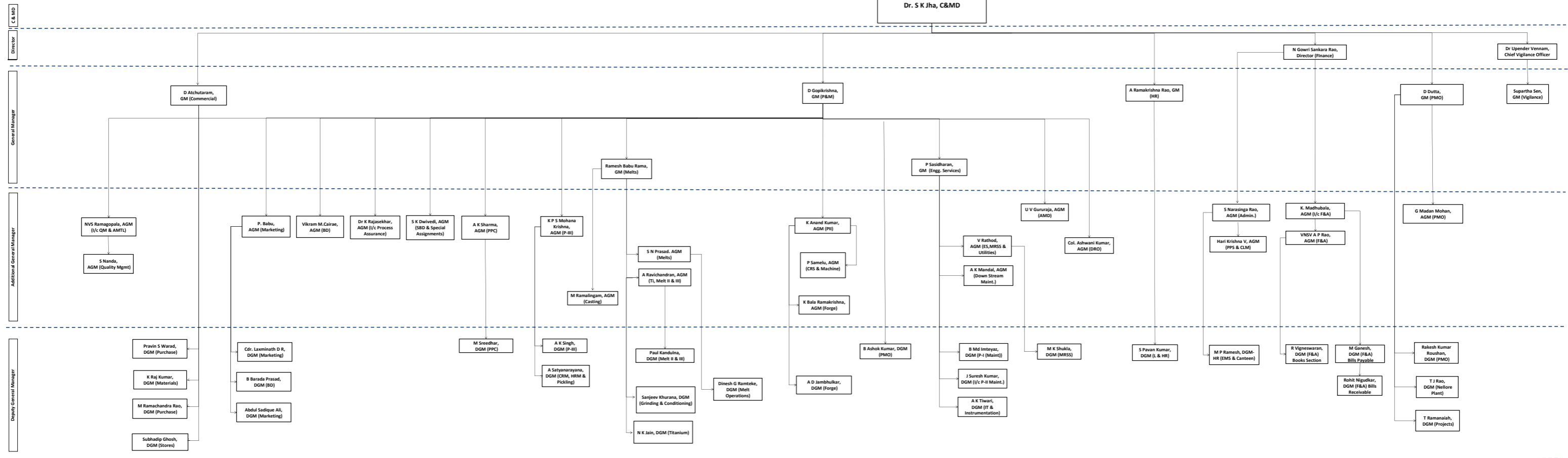


MIDHANI - EXISTING ORGANIZATION STRUCTURE UP TO DGM LEVEL



- List of Abbreviations (In Alphabetical Order):
- Admin.: Administration
  - AMD: Aeronautical Materials Department
  - AMTL: Aeronautical Materials Testing Laboratory
  - BD: Business Development
  - CLM: Contract Labour Management
  - CPS: Corporate Personnel Services
  - CRM: Cold Rolling Mills
  - CRS: Central Repair Shop
  - D(P&M) Director (Production & Marketing)
  - DRO: Delhi Regional Office
  - ES: Engineering Services
  - F&A: Finance & Accounts
  - HR: Human Resources
  - HR & A: Human Resources & Admin.
  - HRM: Hot Rolling Mills
  - L & HR: Legal & Human Resources
  - Mgmt: Management
  - MIRSS: Main Receiving Sub Station
  - PMO: Project Management Office
  - PPC: Production Planning & Control
  - PPS: Plant Personnel Services
  - P&M: Production & Marketing
  - QM: Quality Management
  - SBD: Special Business Division
  - Maint.: Maintenance