



**MISHRA DHATU NIGAM LIMITED**

A Govt of India Enterprise

P. O Kanchanbagh, Hyderabad – 500058, TS, India.

Corporate Identity Number : L14292AP1973GOI001660

Phone: 040-2434001 (10 lines), 2418 4348, Fax: 040 – 24340764

e Mail ID: [kmukesh@midhani-india.in](mailto:kmukesh@midhani-india.in) / [civilworks.proc@midhani-india.in](mailto:civilworks.proc@midhani-india.in)

website: [www.midhani-india.in](http://www.midhani-india.in)



1	ORGANISATION	<b>Mishra Dhatu Nigam Limited</b>
2	DEPARTMENT	<b>Purchase</b>
3	TENDER REFERENCE NUMBER	MDN/PUR/AP20241007/EADVT/115/24-25
4	NAME OF WORK	<b>Civil works involved in extension &amp; renovation of Forge shop wash rooms (G.F + F. F)", Midhani</b>
5	ESTIMATED COST	<b>Rs. 20.47 Lakhs</b>
6	EARNEST MONEY DEPOSIT	Nil
7	BIDDING TYPE	OPEN TENDER
8	BID CLOSING DATE	24.06.2024
9	BID VALIDITY	90 Days
10	OFFICER INVITING BIDS	AGM (I/c Purchase)
11	BID OPENING AUTHORITY	AGM (I/c Purchase)
12	ADDRESS	MISHRA DHATU NIGAM LIMITED PO - Kanchanbagh HYDERABAD - 500058
13	CONTACT DETAILS	For any Technical clarifications please contact Sri Manoj Kumar Shukla Ph. 040-2418 4460

**e-TENDER NOTICE**

1. Tenders are invited on-line on the website <http://eprocuremidhani.nic.in> from the eligible bidders having Class III, Digital Signature Certificate (DSC) issued from any agency authorized by Controller of Certifying Authority (CCA), Govt. of India. For Digital Signature Certificate (DSC) issuer details Please refer [www.cca.gov.in](http://www.cca.gov.in) website, FAQ- How do I get a Digital Signature Certificate (DSC) ?.

For supply of the following items:

Sl. No	MATERIAL Description & Specification	Estimated Requirement		Delivery Required
		Quantity	Units	
1	Civil works involved in extension & renovation of Forge shop wash rooms (G.F + F. F)", Midhani	As per BOQ	As per BOQ	As per Tender Document

**2. Time Schedule of Tender**

Sl.	Particulars	Date (DD/MM/YYYY)	Time (Hrs. Mins)
a	Published date	25.05.2024	18:00
b	Bid submission end date	24.06.2024	11:00
c	Bid Opening date	25.06.2024	11:00

**DOCUMENTS TO BE UPLOADED BY THE BIDDER**

Technical Bid in COVER ONE		
SI No	File Type	Document Description
1	.pdf	TECHNO-COMMERCIAL BID
2	.xls	ATC (AGREED TERMS AND CONDITIONS)
3	.pdf	OTHER IMPORTANT DOCUMENTS AS PER TECHNICAL BID (PART-I)

Technical Bid in COVER TWO		
SI No	File Type	Document Description
1	.xls	PRICE BID (BOQ- BILL OF QUANTITY)

**3. INSTRUCTIONS TO THE TENDERS**

a. The Tender has to be submitted in TWO BID SYSTEM failing which the tender will be liable for rejection. All technical matters, Testimonials, credentials, commercial conditions has to be mentioned in Cover-I i.e. Technical Bid and Price has to be mentioned in Cover-II i.e. Price Bid (BOQ). (Note: The other commercial terms & conditions of your quotation/offer should be mentioned in techno commercial bid i.e. cover -I which will be downloaded and upload the same in cover-I). All bids are to be submitted on-line on the website <http://eprocuremidhani.nic.in> **No bid shall be accepted off-line.**

b. No consideration for wrong entries/errors will be allowed and firms are advised to carefully indicate the applicable taxes and duties amount.

**4. Technical Bid:** Technical bid containing the technical parameters for tendered item will be in PDF format and will be downloaded by the bidder and he will furnish all the required information in PDF file. Thereafter, the bidder will upload the technical bid of the quoted item in PDF file during bid submission. Non-compliance of any one specification parameter of the item will disqualify the bidder in that item. The Technical specification which is incomplete and not submitted as per instruction given above will be rejected.

**5. Price bid:** The Price bid containing the Bill of Quantity will be in Excel format and will be downloaded by the bidder and he will quote inclusive of GST, Taxes & duties etc. for all the offered items on this Excel file. Thereafter, the bidder will upload the same Excel file during bid submission in respective folder. The Price-bid will be in Percentage BOQ format and the bidder shall quote for all the tendered items and the L-1 will be decided for overall items. The Price-bids of the tenderers will have no condition. The Price Bid which is incomplete and not submitted as per instruction will be rejected.

6. The "General Terms & Conditions" as mentioned in the NIT shall form an integral part of the NIT and will also form a part of the Orders placed against this tender.

**7. Submission of Bid:**

a. In order to submit the Bid, the bidders have to get themselves registered online on the e-Procurement portal <http://eprocuremidhani.nic.in> with valid Digital Signature Certificate (DSC) of Class III issued from any agency authorized by Controller of Certifying Authority (CCA), Govt. of India. The online Registration of the Bidders on the portal will be free of cost and one time activity only.

b. The bidders have to accept unconditionally the on-line user portal agreement which contains the acceptance of all the Terms and Conditions of NIT including Commercial & General Terms & Conditions, along with on-line undertaking in support of the authenticity of the declarations regarding the facts, figures, information and documents furnished by the Bidder on-line in order to become an eligible bidder. No conditional bid shall be accepted.

c. In case the Tender Committee finds that there is some error/omission in scanning & uploading the Technical Cover document by a bidder, the same will be specified on-line under shortfall documents by Evaluator normally within short duration of Technical-bid (Part-I) opening, indicating the start date and end date giving specific time for on-line submission by bidder. The bidder will get the intimation about this through a standard system generated e-mail and will re-upload the same within specified period. No additional time will be allowed for on-line submission of document.

8. Modification and Resubmission of bid : The bidder may modify and resubmit the bid on-line as many times as he/she may wish, only before the deadline of submission of tender.

**9. Firm Price:** Price quoted shall be firm and fixed till complete execution of order.

10. After evaluation of Techno-commercial bid, all the bidders will get the information regarding status of their eligibility along with the date of Price-bid opening on their personalized dash board and also by system generated e-mail. It will be the bidder's responsibility to check the status of their Bid on-line at least once daily, after the opening of Techno-commercial bid till opening of the Price-bid. No separate communication will be made to the bidder in this regard.

11. The Bidder, who's Bid has been accepted, will be notified of the award on-line and also by registered post by the employer prior to expiration of the bid validity period. The L-1 bidder will get the

information regarding award of work on their personalized dashboard on-line. On receipt of Letter for Acceptance (LOA)/Work Order of the tender issued by the MIDHANI, the successful tenderer shall execute contract agreement in the company's prescribed form for the due fulfillment of the contract. Failure to enter into the required contract within the specified period in the work order shall entail cancellation of LOA/work order and forfeiture of the Earnest Money. The written contract to be entered into between the contractor and the MIDHANI, shall be the foundation of the rights of both the parties and the contract shall not be deemed to be executed until the contract is signed by both the parties i.e. Contractor and the MIDHANI.

**12. Cost of Bidding:** The bidder shall bear all costs associated with the preparation and submission of his bid and the Employer will in no case be responsible and liable for those costs.

**13. Currencies of Bid and Payment:** The unit rates shall be quoted by the Bidder entirely in Indian Rupees only.

**14.** It is the bidder's responsibility to comply with the system requirement i.e. hardware, software and internet connectivity at bidder's premises to access the e-tender website. Under any circumstances, MIDHANI shall not be liable to the bidders for any direct/indirect loss or damages incurred by them arising out of incorrect use of the e-tender system or internet connectivity failures.

**15. One Bid per Bidder:** Each Bidder shall submit only one Bid, either individually, or as a partner in a partnership firm or a partner in a Joint Venture or a public limited firm. A Bidder who submits or participates in more than one Bid (other than as a subcontractor or in cases of alternatives that have been permitted or requested) will cause all the proposals with the Bidder's participation to be disqualified.

**16. Laws Applicable:** The Contract (order) placed covered by this tender shall be governed by the laws of Government of India for the time being in force.

**17. Force Majeure:** a) Unforeseeable causes beyond the control and without any fault or negligence of either party which effect delay or failure to fulfill this agreement partially or wholly shall be regarded as force majeure and shall include causes such as Act of God, War Fires, Floods, Epidemics, Quarantines , Govt. Restrictions Strikes, Earth Quake. etc.

b)The occurrence of case of force Majeure shall be notified by the party affected by it to the other party immediately by cable/fax and confirmed by registered air mail letter, stating the nature of occurrence accompanied by a certificate issued by Chamber of Trade/Commerce or by the Ministry of Shipping, Government of India, New Delhi as the case may be . The same procedure shall be observed when the case of force majeure ceases.

**18.** The MIDHANI reserves the right to postpone the date of receipt and opening of tenders or to cancel the tenders without assigning any reason whatsoever.

**GENERAL GUIDELINES AND PROCESS FLOW FOR**  
**E-TENDER CUM AUCTION:**

**General guidelines and Process Flow for Tender cum Auction, if applicable are as under :-**

- a. e-Reverse Auction will be initiated after opening of price bids, as specified by Tender Inviting Authority (TIA) as detailed above.
- b. There will be no participation fees for e-Reverse auction.
- c. Upon opening of the price bids, a reverse auction platform will be created, displaying only the overall L1 price received (landed Price).
- d. L-1 Landed price/cost to the company will be the start bid price for tenders Goods. Bidder has to bid the landed price to MIDHANI in the reverse auction. L1 Price will be inclusive of GST, Taxes etc.
- e. The L1 price/start bid price is Landed / cost to the company price on which the auction will be initiated. At the end of reverse auction, the L1 bidder shall have to submit break up of prices conforming to the lowest landed rate quoted by him in the reverse auction.
- f. The L-1 Bidder after the reverse auction has to submit the breakup of Landed Price in the shortfall document. The detailed breakup of offered landed price uploaded by the bidder shall be considered and order if place shall be with the same breakup of prices. The L-1 bidder after reverse auction will be responsible to ensure that Landed rate as per the breakup of prices provided by him after the reverse auction & L-1 landed rate offered by him in the reverse auction is exactly same, otherwise it may be treated as withdrawal of offer and it will attract penal action. While giving breakup, the bidder will have to consider the same rate of taxes and duties as quoted while submitting the e-Price bid. In case the L-1 bidder fails to submit the breakup of landed price within 02 days, MIDHANI shall be at liberty to place order on the basis of breakup of the e-price bid submitted by the bidder along with the initial offer and same shall be binding on the bidder.

- g. The decrement will be 0.5% minimum of the start bid price rounded off to the nearest rupee. The reduction shall have to be made as per decrement value or in multiple thereof.
- h. Initial period of reverse auction will be two hours (Start date & time of auction shall be intimated online after opening of Bid). There will be auto extensions of time every time by ten minutes in case of any reduction recorded in the last ten minutes. The reverse auction will come to a close only when there is no further reduction recorded in the last ten minutes slot.
- i. System protects bid and bidder information till auction gets over and displays current L1 price only to the bidders.
- j. System provides bidder details along with bid documents at the end of reverse auction process.
- k. The log details of the entire reverse auction process will be generated by the system once the process of reverse auction is completed.
  
- l. If a bidder does not submit his bid in the Reverse Auction, the price quoted by him in the price bid shall be considered as the valid price of that bidder. The status of the bidder (L1, L2 etc) shall be evaluated considering either the bid price submitted in Reverse auction or the Price quoted in the price bid, whichever is lower.
- m. Since, e-reverse auction is a sequel to e-tender, the process of finalizing the tender upon completion of reverse auction will be same as the tender process without reverse auction.
- n. The bid history shall reflect only the landed price. The landed price shall also not be same for two bidders even if any bidder makes such an attempt.
- o. Server time shall be the basis of Start time & Closing time for bidding and shall be binding for all. This would be visible to all concerned.
- p. On expiry of the closing of the auction, the bid history showing all the last valid bids offered along with name of the bidders shall be published. All bidders shall have the facility to see and get a print of the same for their record.

- q. All electronic bids submitted during the reverse auction process shall be legally binding on the bidder. The chronologically last bid submitted by the bidder till the end of the auction will be considered as the valid price bid offered by that bidder and acceptance of the same by MIDHANI will form a binding contract between MIDHANI and the bidder for entering into a contract.
- r. Conditional discounts shall not be considered. If a bidder offers a discount unilaterally after submission of bid, the discount shall not be considered for evaluation of offers but shall be availed if order is placed on such tenderer.
- s. If the lowest price received during reverse auction is unreasonable or it is unacceptable on ground of being too high or too low compared with estimated price, the management reserves right to seek justification of the price from lowest bidder.
- t. In case of disruption of service at the service provider's end while the RAP is online, due to any technical snag or otherwise attributable to the system failure at the server end, the RAP process will start all over again. In such a situation, the last recorded lowest price of prematurely ended RAP, will be the 'Start Bid' price for the restarted RAP. The prices quoted in the prematurely ended RAP will be binding on all the bidders for consideration, if the restarted RAP does not trigger within the stipulated time.
- u. Disruption and restarting of RAP shall be intimated to all the bidders through system/SMS/e-mail through e procurement portal. All the time stipulations of normal RAP will be applicable to the restarted RAP.



**MISHRA DHATU NIGAM LIMITED  
P.O.KANCHANBAGH, HYDERABAD**

**Part-I (TECHNICAL BID)  
(REVERSE AUCTION)**

**“Civil works involved in extension & renovation  
of Forge shop wash rooms(G.F + F.F)”, MIDHANI**



**Mishra Dhatu Nigam Limited  
Kanchanbagh, Hyderabad**

**Tender Notice No:** MDN/PUR/AP20241007/EADVT/115/24-25

**Date:** 25-05-2024

**Two part tender is invited on behalf of Mishra Dhatu Nigam Ltd Hyderabad, (MIDHANI) for the work of “Civil works involved in extension & renovation of Forge shop wash rooms(G.F + F.F)”, MIDHANI**

Particulars of the tender are:

Estimate cost : **Rs 20.47 Lakhs**

Earnest Money Deposit (EMD) : NIL.

Contract Period : **90 days (Staggered)** time from date of handover of Site is required for the said works.

The tender document can be downloaded from <http://eprocureMIDHANI.nic.in>, or [www.midhani-india.in](http://www.midhani-india.in), from 25-05-2024 till 10:30 hrs of **24-06-2024**. Tenders will be received up to 10.30 hrs **on 24-06-2024** and part-1 (Technical Bid) will be opened on **25-06-2024** at 11.00 hrs. & price bid will be opened later. Interested parties may download the documents and participate in the tender. Along with the Tender Enquiry for the above work you are requested to furnish your offer through online <http://eprocureMIDHANI.nic.in> before last date of submission. Competent Authority of “MIDHANI” reserves the rights to reject any or all tenders without assigning any reasons thereof.

**Addl General Manager (I/c Purchase)  
Mishra Dhatu Nigam Ltd., Hyderabad.**

Section-1

**Mishra Dhatu Nigam Limited**  
**Kanchanbagh, Hyderabad.**

**Tender Notice No:** MDN/PUR/AP20241007/EADVT/115/24-25

**Date:** 25-05-2024

MIDHANI, Hyderabad invites tender for the work of **“Civil works involved in extension & renovation of Forge shop wash rooms(G.F + F.F)”**, MIDHANI. Tenders to be submitted by 10.30 hrs on **24-06-2024** Part-1 (Technical Bid) will be opened at 11.00 hrs on **25-06-2024** through open tender in e-procurement mode with reverse auction.

**Mishra Dhatu Nigam Limited  
Kanchanbagh, Hyderabad.**

**Tender Notice No:** MDN/PUR/AP20241007/EADVT/115/24-25

**Date:** 25-05-2024

Two part tender is invited on behalf of Mishra Dhatu Nigam Ltd., Hyderabad, (MIDHANI) for the work of **“Civil works involved in extension & renovation of Forge shop wash rooms(G.F + F.F)”, MIDHANI** from reputed contractors who are qualified, proven having similar experience.

1. The estimated cost of work is **Rs 20.47 Lakhs**. However, this estimated cost is only indicative & serves as rough guide to the tender.
2. Contract period: **90 days (Staggered) from date of handover of Site is required for the said work.**
3. Chairman & Managing Director, MIDHANI shall be the accepting authority of this Contract.
4. **Eligibility Criteria:**

The bidder shall meet all the criteria stipulated hereunder.

S. No.	Eligibility Criteria	Documents to be submitted for eligibility criteria
01	<b>Bidder (sole) / Lead Consortium Partner</b> Should have been established and operating for a period of at least 05 years prior to the date of Tender.	Certificate of Incorporation issued by Registrar of Companies (OR) Certificate of registration by registrar of Firms (OR) GST certificate in case of Proprietary firms (For prior to July'2017 period, related Tax registration e.g VAT etc).
02	PAN Registration No.	Copy of PAN registration no. in the bidder's / consortium / JV partners name issued by Income Tax Authority
03	GST Registration no.	Copy of GST registration no. in the bidder's / consortium / JV partners name enrolled in any state Govt.

04	Average Annual Turnover during the last 3 financial years should be equal to or more than <b>Rs 6.14 lakhs</b>	Audited financial statement of sole bidder / lead partner declaring the annual turnover of last 3 financial years. The audited Profit & Loss statement for the corresponding financial years shall be enclosed.
05	Solvency Certificate	<p>The bidder sole / consortium / JV partners shall submit the following:</p> <p>a) Bidders sole / consortium / JV partners shall have positive net worth in each of the three previous financial years. Audited balance sheets for the corresponding financial years shall be enclosed.</p> <p>“OR”</p> <p>b) latest Bankers Solvency Certificate for <b>Rs 8.19 lakhs</b> issued by Nationalized / Scheduled Bank issued not earlier than 06 months from the date of tender to be submitted.</p>
06	Experience of Sole Bidder / Lead partner having successfully completed similar completed works., in the last 7 years from the date of this tender notice	<p>The detailed work order containing BOQ along with experience certificate shall be enclosed by the bidder. In case of experience in private companies, TDS/26AS for the year of work executed to be submitted. Experience of successfully completed similar works during last 7 years from the date of tender notice should be either of the following:</p> <p>i) <b>Three similar completed</b> any minor civil works/ maintenance works/civil renovation works each costing not less than the amount equal to 40% of the estimated value mentioned in the tender notice / Or</p> <p>ii) <b>Two similar completed</b> any minor civil works/ maintenance works/civil renovation works each costing not less than the amount equal to 50% of the estimated value mentioned in</p>

		the tender notice / Or iii) <b>One similar completed</b> any minor civil works/ maintenance works/civil renovation works each costing not less than the amount equal to 80% of the estimated value mentioned in the tender notice. PS : Experience in renovation of Wash rooms is preferable but not compulsory.
07	Registration of ESI & PF	A copy of ESI & PF registration details in the name of bidder sole / Consortium / JV partners
08	Unconditional acceptance of all Technical, commercial terms and conditions along with corrigendums if any.	Self-certified documents by the bidder sole / Consortium / JV partners

5. The tenders shall be submitted in online for part-I and part-II. i.e., Technical bid & Price bid and the same shall be uploaded in the MIDHANI portal on or before **24-06-2024 up to 10.30 hrs.** Tenders received late will not be considered and will be rejected.
6. **Technical Bid (Part -1)** will contain mainly:
- Credentials of contractor (as specified in the above clause –4-eligibility criteria) along with “Technical bid”.
  - Latest Original Bank solvency (not older than six months from the date of this NIT) worth **Rs. 8.19 lakhs** from any Nationalized/ Scheduled Bank shall be enclosed in original. (Also period of validity to be mentioned for 06 months).
  - Details as indicated in enclosed technical bid format.
  - Details of credentials of prospective tie up, sub- contractors along with proof.
  - Any other additional information, which is thought to be necessary by the tenderer.
  - MIDHANI employee sons / daughter / near relatives are not to participate in tender.
7. **“Price Bid” (Part -2)** : The tenderer shall indicate his offer of quotation for above mentioned work on item rate basis in the price bid attached and shall submit online in MIDHANI portal along with technical bid.
8. **The TECHNICAL BID** will be opened at **11.00 hrs on 25-06-2024** & **PRICE BID** of the eligible and qualified in technical bid only will be opened at a later stage for which the date and time will be intimated to them.

9. The tenderers, at his own cost are advised to inspect and survey the site and its surroundings, specifications & drawings etc and satisfy themselves before submitting their tender. As to the form and nature of the site, means of access to the site, accommodation that may be required etc. In general, tenderer shall themselves obtain all necessary information as to risk contingencies and other circumstances which may influence or affect their tender. The tenderer shall be deemed to have full knowledge of the site, specifications & drawings etc, whether he inspects it or not and no extra claims due to any misunderstandings or otherwise shall be allowed.
10. Submission of a tender by a tenderer implies that he has read this notice and all other contract document and has made himself aware of the scope and specifications for the work to be done and conditions of MIDHANI and local conditions and other factors bearing on execution of the work. No extra claim will be entertained on account of misunderstandings or what so ever.
11. a) This is an item rate contract and the bidder has to quote price viz price + taxes + GST + Cess. The accuracy shall be up to two decimals for executing works indicated in scope of work, salient features mentioned elsewhere in tender.  
b) **The estimated value of work is Rs 20.47 Lakhs)**
12. The item wise payment of the work will be made as indicated elsewhere in this document, quantities in BOQ are indicative; however payment will be made as per actual work done at site based on the joint measurements.
13. The tenderer shall submit the tender, who satisfies each and every condition laid down in the tender document, failing which; the tender is liable to be rejected.
14. MIDHANI reserve to the right of accepting the whole or any part of the tender and the tenderer shall be bound to perform the same at his quoted rates.
15. MIDHANI reserves the right to reduce the scope of work without any compensation to contractor and contractor has to work at quoted rates for the reduced scope of work.
16. The rate quoted shall indicate all the levies/taxes, GST or any other tax and duties prevailing at the time of submission of tender in respect of this contract shall be borne by the contractor. MIDHANI will not entertain any claim whatever in this respect.
17. The tender submitted shall remain valid for a period of 90 days from the date of opening of the tender. The tenderer shall not be entitled, during the said period of validity, to revoke or cancel his tender or vary the tender given or any

- item/conditions thereof, failing which the Bid security by the tenderer will be applied by MIDHANI.
18. The bidder shall bear all costs associated with preparation and submission of his Bid, and MIDHANI will in no case be responsible or liable for those Costs
19. All documents relating to the Bid shall be in the English language
20. MIDHANI does not bind itself to accept the lowest or any tender or to give any reasons for their decision and to cancel the bidding process and reject all Bids, at any time prior to the award of Contract, without thereby incurring any liability to the affected Bidder or Bidders or any obligation to inform the affected Bidder or Bidders of the grounds for MIDHANI's action. This notice inviting tender shall form the part of the contract document.
21. The tenderer shall attend **Pre-bid meeting on 05-Jun-2024 at 11.00 am** through Video Conference. The link for video conference shall be intimated one day prior to pre-bid meeting date. Interested parties may request for weblink for video conference at least two days in advance to date of meeting through email. Also parties can discuss on telephone and raise query by mails before pre bid meeting and at least one week before submission of bids.
- a) The Bidder or his officially authorized representative is invited to attend a pre-bid meeting.
  - b) The purpose of the meeting is to clarify issues and to answer questions on matters that may be raised at that stage.
  - c) The Bidder is requested to submit their questions / queries / clarifications in writing by email / fax/ post to reach MIDHANI not later than one week before the meeting.
  - d) Minutes of the meeting, including the text of the questions raised (without identifying the source of enquiry) and the responses given will be transmitted without delay to all purchasers of the bidding documents. Any modification of the bidding documents which may become necessary as a result of the pre-bid meeting shall be made by MIDHANI exclusively through the issue of an Addendum only and not through the minutes of the pre-bid meeting.
  - e) All bidders are advised to attend the pre bid meeting in their own interest failing which, it is deemed that they have understood all the terms & conditions & complete tender. No further queries will likely be entertained after the pre bid meeting.

### **23. Amendment of Bid Documents**

- 23.1 Before the deadline for submission of bids, MIDHANI may modify the bidding documents by issuing addenda.
- 23.2 Any addendum so issued shall be part of the bid documents as well as Contract document and shall be communicated in writing by email / fax/post to all the purchasers of the bidding documents. Prospective Bidders shall acknowledge receipt of each addendum by email / fax to MIDHANI.
- 23.3 All the bidders must check the web site of MIDHANI for any changes/addendums before the date of submission of the tender. No excuse will be entertained in this regard. Thereafter no extra claim will be**

**entertained on account of misunderstandings or what so ever. Corrigendum will be published only on web.**

23.4 To give prospective Bidders reasonable time to take an addendum into account in preparing their bids, MIDHANI may extend the date for submission of bids, if necessary.

23.5 **For commercial clarifications, pl contact:**

- Sri K.Mukesh, Sr.Manager (Purchase)

Mail ID: [kmukesh@midhani-india.in](mailto:kmukesh@midhani-india.in), Landline: 040-24184348

**For Technical clarifications, pl Contact:**

- Sri D.Harshavardhan, Sr. Manager(Civil)

Mobile No: 9949099524

Mail ID:- [dhvardhan@midhani-india.in](mailto:dhvardhan@midhani-india.in)

- Mrs. P.Sindusha, Manager(Civil)

Mobile no: 9154951893

[Email : Sindusha.p@midhani-india.in](mailto:Sindusha.p@midhani-india.in)

**24. *Language of the Bid***

24.1 All documents relating to the bid shall be in the English language.

**25. Contractor has to quote price. The accuracy shall be up to two decimals.**

**26.** The tender application and related documents will be assessed to demonstrate convincingly that the applicant possesses the required experience, together with the technical, administrative, and financial capability to perform the Contract and has good performance record in the relevant area. Applicants will not be considered if they have a poor performance record such as: abandoning of works; not properly completing /defaulting contracts, inordinate delays in completing contracts; litigation history, financial failure, etc. MIDHANI reserves the right to approach its previous clients for the purpose of this Contract.

P.S:- This notice inviting tender shall form the part of the contract document.

**For and on behalf of  
Mishra Dhatu Nigam Limited**

**Subhadip Ghosh  
Addl. GM (I/c Purchase)**



**FORMS OF BID AND QUALIFICATION INFORMATION  
CONTRACTOR'S BID**

**SUB: BID for the Work \_\_\_\_\_**

**To:**

\_\_\_\_\_  
\_\_\_\_\_  
\_\_\_\_\_

Dear Sir,

We offer to execute the Works described above in accordance with the Conditions of Contract accompanying the Bidding Document issued to us. The Earnest Money amounting to Rs ..... (in figures) ..... (in words) in accordance with the NIT is enclosed herewith (to be filled in by the Bidder).

This Bid and your written acceptance of it shall constitute a binding contract between us. We understand that MIDHANI is not bound to accept the lowest or any Bid receive.

We hereby confirm that this Bid complies with the Bid validity. We also confirm that E.M.D. and other required documentary evidences related to this part of the Bid are enclosed (As listed below) herewith either in original/ copies attested by Gazetted Officer/ copies duly authenticated by us with signature and seal along with affidavit as per the format provided in the bid document.

Yours faithfully,

Authorized Signature: \_\_\_\_\_

Name and Title of the Signatory: \_\_\_\_\_

Name of the Bidder : \_\_\_\_\_

Address: \_\_\_\_\_

Date: \_\_\_\_\_

(To be filled in by the Bidder)

Encl: i) E.M.D of Rs \_\_\_\_\_ Vide \_\_\_\_\_ dt

- ii)
- iii)
- iv)
- v)

**FORMS OF BID AND QUALIFICATION INFORMATION****QUALIFICATION INFORMATION**

(The information to be submitted by all the Bidders)

**1. Individual Bidders or Individual Members of Joint Ventures/Consortium****1.1 Constitution or Legal status of Bidder (attach copy)**

Place of registration: \_\_\_\_\_

Principal place of business: \_\_\_\_\_

Power of Attorney of signatory Bid: (attach)

**1.2 Detail of the turnover during last 3 (three) years:**

<b>Annual Turnover Data (Construction only)</b>		
<b>Year</b>	<b>Turnover in Rs.</b>	<b>Remarks</b>

**1.3 Joint Venture /consortium details (if any):**

<b>Name of all partners of a joint venture/consortium</b>
1. Lead Partner
2. Partner
3. Partner

**NOTES:** Joint Ventures/consortium must comply the following requirements:

- I. Following are the minimum qualification requirements for joint ventures:
  - a. The lead partners shall meet not less than 40% of all the qualifying criteria stated in the bid document.
  - b. The other partners shall meet not less than 30% of all the qualifying criteria stated in the bid document.
- II. The formation of joint venture/consortium or change in the joint venture character / partners after submission of the bid and any change in the bidding regarding joint venture will not be permitted.
- III. Any bid shall be signed so as to legally bind all partners jointly and severally and bid shall be submitted with a copy of the Joint Venture /consortium providing the joint and several liabilities with respect to the contract.
- IV. The pre-qualification of a joint venture/consortium does not necessarily pre-qualify of its partners individually or as a partner in any other joint venture or association. In case of dissolution of a joint venture, each one of the firms may pre-qualify if they meet all the pre-qualification requirements, subject to written approval of the MIDHANI.
- V. The bid submission must include documentation evidence to the relationship between joint venture partners in the form of JV / consortium to legally bind all



**1.7 Evidence reports of the last three years: balance sheets, profit and loss statement and auditor's report etc.** (Copies to be submitted and the following format be filled up) enclosed.

Financial information in Rs.	Actual : Previous three years					Projected : Next two years	
	1	2	3	4	5	6	7
1. Total assets							
2. Current assets							
3. Total liabilities							
4. Current liabilities							
5. Profits before tax							
6. Profits after tax							

**1.8 Details of the major construction equipment to be used for the work:**

Sl.no	Description of equipment	Number	Any other relevant information

## GENERAL CONDITIONS OF CONTRACT

### CHAPTER – I

#### **INTERPRETATION AND DEFINITIONS:-**

In these General conditions of contract the following terms shall have the meaning hereby assigned to them except where the context otherwise requires.

#### **CLAUSE 1:**

##### **Singular and Plural**

Where the context so requires, words imparting the singular only also include the plural and vice versa.

#### **CLAUSE 2:**

##### **Headings and Marginal Notes to Clauses**

Headings and marginal notes to these General Conditions shall not be deemed to form part thereof or not be taken into consideration in interpretation or construction thereof or of the contract.

#### **CLAUSE 3:**

##### **Definitions**

- a. "CONTRACT" means tender and acceptance thereof, which include the following documents.

a)	Tender Notice	PAGE (2)
b)	Technical Bid format	PAGE (11)
c)	Terms of payment	PAGE (20)
d)	General Conditions of contract	PAGE (14)
e)	Special conditions of contract	PAGE (40)
f)	Specification for Civil works.	PAGE (46)
g)	Price Bid Format	PART-II
h)	Work Order	To be issued

Acceptance letter and any other conditions mutually accepted by the parties after issue of acceptance letter.

- b. "TENDER DOCUMENTS" means the Appendix a to g as aforesaid given to the Tenderers for the purpose of preparing their tenders.
- c. "THE CONTRACT SERVICES" means the services described in the tender documents / contract and in individual work order issued including all modifications,

additional services and obligations to be carried out either at site or work places or other places as required for the performance of the contract.

- d. "THE SITE" means the land and other places on, in or through which the work is to be executed under the contract or any adjacent land, path or street which may be allotted to or used for the purpose of carrying out the contract.
- e. "ACCEPTING OFFICER" means an authority appointed by Employer empowered to accept or to reject the tender.
- f. 'ENGINEER-IN-CHARGE' means Engineer or assistant of the Employer appointed from time to time by the Employer to perform the duties like watch and supervise the works and to test and examine any material to be used or workmanship employed in connection with the works. Any written instruction or approval given by the Engineer-In-Charge or his Representative to the Contractor in connection with the works shall bind the Contractor as though it had been given by the Employer.
- g. 'EMPLOYER' means the Mishra Dhatu Nigam Limited, incorporated under the Companies Act 1956, having its registered office at Kanchanbagh P.O., Hyderabad-500 058, in the State of Telangana and includes its successors in office and assigns.
- h. "Market Rate" shall be the rate as decided by the Engineer-In-Charge on the basis of the cost of materials and labour at the Site where the work is to be executed, plus the percentage mentioned in Schedule A to cover all overheads and profit. For material issued by "MIDHANI" the overheads and profit percentage shall be allowed @2.5%.
- i. "In writing" or "Written" means writing, typing, printing and lithography and any other mode of representing or reproducing words in a visible form.
- j. "Notice in Writing" or "Written Notice" means a notice is written, typed or printed characters sent (unless delivered personally or otherwise proved to have been received) by registered post /e-mail / Fax to the last known private or business address or registered office of the addresses and shall be deemed to have been received when in the ordinary course of post it would have been delivered.
- k. "Approved" means approved in writing, including subsequent written confirmation of previous verbal approval and "Approval" means approval in writing including as aforesaid.

## **SCOPE AND PERFORMANCE**

### **CLAUSE 4:**

#### **a) Contract Documents:**

The Contractor shall furnish, free of charge, two certified true copies of the Contract Documents and the schedule of quantities and rates and of all further drawings which may be issued during the progress of the works. He shall keep one copy of these Documentation at the Site in good order, and the same shall at all reasonable times

be available for inspection and use by the Engineer-in-Charge, his representative or by other inspecting Officers.

- b) None of these Documents shall be used by the Contractor for any purpose other than that of this Contract.
- c) The Contractor shall take necessary steps to ensure that all persons employed on any work in connection with this Contract have noticed that the Indian Official Secrets Act 1923. (XIX of 1923) applies to them and shall continue to apply even after the execution of such works under the Contract.

#### **CLAUSE 5:**

##### **Works to be carried out**

###### **a) General:**

The Contractor shall execute the whole and every part of the work in the most substantial and workmanlike manner both as regards materials and otherwise in every respect strict accordance with the specifications. The Contractor shall also conform exactly, fully and faithfully to the design, drawings and instructions in writing in respect of the work assigned by the Engineer-In-Charge.

The works to be carried out under the Contract shall, except as otherwise provided in these conditions, include all the cost of all labour, materials, tools, plant and equipment, and transport, handling, re-handling, all taxes etc which may be required in preparation of and for the full and entire execution and completion of the works. The descriptions given in the Schedule of Quantities shall, unless otherwise stated, be held also to include wastage of materials, carriage and cartage, carrying in return of empties, hoisting, setting, fitting and fixing in position and all other labour etc necessary in and for the full and entire execution and completion as aforesaid & in accordance with technical specifications, good engineering practice and recognized principles.

In case of any class of work for which there is no such specifications as referred to above, such work shall be carried out in accordance with Bureau of Indian Standards Specifications. In case, there are no such specifications in Bureau of Indian Standards, the work shall be carried out as per manufacturer's specifications. In case there are no such specifications as referred to the above the work shall be carried out in all respects in accordance with the instructions and requirements of the Engineer-in-Charge.

###### **b) Engineering Data**

The furnishing of engineering data by the Contractor shall be in accordance with the scope of work and schedule as specified in the technical specifications. The review of these data by the Engineer will cover only general conformance of the data to the specifications and documents. This review and/or approval by the Engineer shall not be construed by the Contractor, as limiting any of his responsibilities and liabilities for mistakes and deviations from the requirements specified under these specifications and documents.

**CLAUSE 6:****Inspection of Site**

The Contractor shall inspect and survey the Site and its surrounding and shall satisfy himself before submitting the tender as to the form and nature of the Site, the Bill of quantities, specifications and nature of work and material necessary for the completion of the works and the means of access to the Site. The accommodation he may require, if any, and in general shall himself obtain all necessary information as to risks, contingencies and other circumstances which may influence or affect his tender. No extra charges consequent on any misunderstanding or otherwise shall be allowed.

**CLAUSE 7:****Sufficiency of Tender**

The Contractor shall be deemed to have satisfied himself before tendering as to the correctness and sufficiency of his tender for the works and of the rate and prices quoted in the Schedule of Quantities, which rates and prices shall, except as otherwise provided, cover all his obligations under the Contract and all matters and things necessary for the proper completion and maintenance (up to defect liability period) of the works.

**CLAUSE 8:****Discrepancies and Adjustment of Errors**

- a. The several documents forming the Contract are to be taken as mutually explanatory of one another, detailed drawing being followed in preference to small-scale drawings and figured dimensions in preference to scale and Special Conditions in preference to General Conditions.
- b. In the case of discrepancy between Schedule of Quantities, the Specifications and/ or the Drawings, the following order of preference shall be observed:
  - I. Description in Schedule of Quantities.
  - II. Particular Specifications and special Conditions, if any.
  - III. Drawings
  - IV. General Specifications
  - V. General conditions
- c. If there are varying or conflicting provisions made in any one document forming part of the Contract, the Accepting Authority shall be the deciding authority with regard to the intention of the document.
- d. Any error in description, quantity or rate in Schedule of Quantities or any omission there from shall not vitiate the Contract or release the Contractor from the execution of the Whole or any part of the works comprised therein according to drawings and specifications or from any of his obligations under the Contract.



- e. If on check there are found to be differences between the rates given by the Contractor in words and figures or in the amount worked out by him in the Schedule of Quantities and general summary, the same shall be adjusted in accordance with the following rules:-
- I. In the event of a discrepancy between description in words and figures quoted by a tenderer, the description in words shall prevail.
  - II. In the event of an error occurring in the amount column of Schedule of Quantities as a result of wrong extension of the unit rate and quantity, the unit rate shall be regarded as firm and extension shall be amended on the basis of the rate.
  - III. All errors in totaling in the amount column and in carrying forward totals shall be corrected.
  - IV. The totals of various sections of Schedule of Quantities amended shall be carried over to the General Summary and the tendering sum amended accordingly. The tendered sum so altered shall, for the purpose of tender, be substituted for the sum originally tendered and considered for acceptance instead of the original sum quoted by the tenderer. Any rounding off of the Quantities or in sections of Schedule of Quantities or in General Summary by the tenderer shall be ignored.
- f. If the bidder did not quote any rate for any items. The rate of such items will be considered as zero. The bidder is bound to execute the items at a zero price as it will be deemed that the rate /amount have been loaded on the other items.

**CHAPTER – II****1. ASSIGNMENT OR TRANSFER OF CONTRACT:**

The contractor shall not without the prior written approval of the Accepting officer, assign or transfer the contract or any part thereof or any share, or interest therein to any other person. No sum of money which may become payable under the contract shall be payable to any person other than the contractor unless the prior written approval of the Accepting Officer to the Assignment or transfer is given.

**2. SUB – CONTRACT**

The contractor shall not sublet or Sub-contract any portion of the contract without the prior written approval of the Accepting Officer.

**3. LAW GOVERNING THE CONTRACT:**

The Indian laws shall govern this contract for the time being in force and as modified from time to time.

**4. SUBMISSION OF AGREEMENTS, BANK GUARANTEES ETC.,**

Any agreement, Bank guarantee required to be executed under this contract shall be made at the cost of the contractor with proper stamp duty as per the prescribed formats. However, MIDHANI have the right to alter, modify, and delete any materials in such formats as deemed fit.

**5. JURISDICTION:**

The contract and all questions, disputes or differences arising under or in connection with this contract, subject to Arbitration clause, shall be subject to the exclusive Jurisdiction of the courts within the local limits of Hyderabad, Telangana State, India.

**6. CANCELLATION OF CONTRACT FOR INSOLVENCY ASSIGNMENT, TRANSFER OR SUBLETTING OF CONTRACT:**

The Accepting Officer may without prejudice to any other right or remedy, which shall have accrued or shall accrue thereafter to MIDHANI , shall cancel the contract in any of the following cases:

If the contractor:

- a) Being an individual, or a firm, any partner thereof shall at any time be adjudged bankrupt or have receiving order or order for administration of his estate made against him or shall take any proceeding for liquidation of compensation under Bankruptcy laws for the time being in force or makes any conveyance or assignment of his effects of composition or arrangement for the benefit of his creditors or proposes to do so, or if any application be made under any Bankruptcy laws for the time being in force for the sequestration of his estate or if a trust deed be granted by him or be MIDHANI of his creditors or
- b) Being a company, shall pass resolution or the court shall make an order for the liquidation of its affairs, or a receiver or Manager on behalf of the Creditors shall be appointed or circumstances shall arise which entitles the court or Creditor to appoint a receiver or manager or
- c) Assigns, transfers, sublets/Sub-contract or attempts to assign, transfer or sublet any portion of the work without the prior written approval of the Accepting officer. Whenever the Accepting Officer exercises his authority to cancel the contract under this conditions,

he may complete the work by any means at the completion (as certified by MIDHANI which is final and conclusive) being less than the contract cost, the advantage shall accrue to the MIDHANI and that if the cost of completion exceeds the money due to the contractor shall either pay the excess amount ordered by the MIDHANI or the same shall be recovered from the contractor by other means.

7. **Method of measurement**

- a) Except where any general or detailed description of the work expressly shows to the contrary, measurement shall be taken in accordance with the procedure set forth in Specifications, notwithstanding any provision in the relevant Standard Method of Measurement or any general or local custom. In the case of items which are not covered by the Schedule of Rates/Specification, measurement shall be taken in accordance with the relevant Standard Method of Measurement issued by the Bureau of Indian Standards and if for any item no such standard is available, then a mutually agreed method shall be followed. However in no case whatsoever the bidder can refuge to execute the items including extra/additional items.

b) **Payment on Account**

**Three R.A Bills and one Final Bill will be paid.**

Interim bill/ RA bill shall be submitted by the Contractor for the work executed on the basis of such recorded measurement on the format of "MIDHANI" at intervals mentioned in Schedule A on or before the date fixed by the Engineer-in-Charge. The Engineer-in-Charge shall then arrange to have the bill verified. The contractor has to furnish all material bills along with each bill (if any).

- c) Interim bill/ RA bill shall be submitted by the Contractor for the work executed on the basis of such recorded measurement on the format of "MIDHANI" at intervals mentioned in Schedule A on or before the date fixed by the Engineer-in-Charge. The Engineer-in-Charge shall then arrange to have the bill verified.
- d) Payment "On Account" for amount admissible shall be made, on the Engineer-in-Charge certifying the sum to which the Contractor is considered entitled by way of interim payment for the following:-
- i. For works: All work executed, after deducting there-from the amounts already paid, the 5% deduction from each running bill and such other amounts as may be deductible or recoverable in terms of the Contract. The running bills for works will be paid within 15 working days from the date of submission of the verified/certified bills by the Engineer.
- e) Payment of the Contractor's on account bill shall be made by "MIDHANI" within 30 days from the date of submission of the bill subject to the acceptance of the same by the Engineer-in-charge.
- f) Any interim bill paid, relating to work done, may be deducted or adjusted in subsequent interim bill or in the final bill. No certificate of the Engineer-in-Charge recommending for interim payment shall itself be conclusive evidence that the work or materials to which it relates is/are in accordance with the Contract.
- g) Pending consideration of extension of date of completion, interim payments shall continue to be made as herein provided, without prejudice to the right of "MIDHANI" to take action under the terms of the contract for delay in the completion of work, if the extension of date of completion is not granted by the competent authority.

**h) Time Limit for Payment of Running Bill & Final Bill**

**R.A Bill will be paid within 15 days from the date of submission of the verified/certified bills by the Engineer- in- Charge.** And that of the final bill shall be submitted by the Contractor within 75 days of physical completion of the works and payment for final bill will be made within 30 working days from the date of certification of Engineer- in - Charge. No further claims shall be made by the Contractor after submission of the final bill and these shall be deemed to have been waived and extinguished. Payment of those items of the bill in respect of which there is no dispute and of items in dispute, for quantities and at rates as approved by the Engineer-in-Charge, shall be made within the period of Six months specified hereunder. The period shall be reckoned from the date of receipt of the correct bill by the Engineer-in-Charge.

**i) Deviations/Variations Extent & Pricing:****I. The Engineer-In-Charge shall have power**

a. to make alteration in, omission from, additions to, or substitutions for the original specifications, drawings, instructions that may appear to him to be necessary or advisable during the progress of the work, without effecting the cost.

b. to omit a part of the Works in case of non-availability of a portion of the Site or for any other reasons, and the Contractor shall be bound to carry out the Works in accordance with any instructions given to him in writing signed by the Engineer-In-Charge and such alterations, omissions, additions or substitutions, shall form part of the Contract as if originally provided therein and any altered, additional or substituted work which the Contractor may be directed to do in the manner above specified as part of the works, shall be carried out by the Contractor on the same conditions in all respects including price on which he agreed to do the main work.

Any alterations, omissions, additions or substitutions which radically change the original nature of the Contract shall be ordered by the Engineer-In-Charge as a deviation and in the event of any deviation being ordered, which in the opinion of the Contractor changes the original nature of the Contract, he shall nevertheless carry it out and the disagreement, if any, as to the nature of work and the rate to be paid therefore shall be resolved in accordance with Arbitration.

II. The time for completion of the works shall, in the event of any deviations resulting in additional cost over the Contract Sum being ordered be extended as follows, if requested by the Contractor.

a. in the proportion which the additional cost of the altered, additional or substituted work, bears to the original Contract Sum; plus

b. Appropriate percentage of the time calculated in (a) above or such further additional time as may be considered reasonable by the Engineer-In-Charge.

III. Rates for such altered, additional or substituted work shall be determined by the Engineer-In-Charge as follows:-

IV. If the rate for altered, additional or substituted item of work is specified in the Schedule of Quantities, the Contractor shall carry out the altered, additional or substituted item at the same rate. In the case of composite tenders, where two or more Schedule of Quantities may form part of the Contract, the applicable rate shall be taken from the Schedule of Quantities of that particular part in which the deviation is involved, failing that at the lowest applicable rate for same item of work in the other Schedule of Quantities.

V. If the rate for any altered, additional or substituted item of work is not specified in the Schedule of Quantities, the rate for that item shall be derived from the rate for the nearest similar item specified therein. In case of composite tenders where two or more Schedule of Quantities form part of the Contract, the rate shall be derived from the nearest similar item in the Schedules of Quantities of the particular part of works in which the deviation is involved, failing that from the lowest of the nearest similar items in other Schedule of Quantities.

VI. If the rate for any altered, additional or substituted item of work cannot be determined in the manner specified in sub-paras IV and V above, then such item of work shall be carried out at the rate entered in the Schedule of Rates available with Engineer-In-Charge, plus/minus the percentage by which the tendered amount of the works actually awarded is higher or lower than the estimated amount of the works actually awarded.

VII. If the rate for any altered, additional or substituted item of work cannot be determined in the manner specified in sub paras IV and V above, then the rate for such item of work shall be derived from the Schedule of Rates specified in sub-Para VI above plus/minus the percentage mentioned in that sub-Para. In the case of materials issued by "MIDHANI" issues rates of materials, with storage charges recovered, enhanced by 2.5% for profits and overheads shall be adopted in place of schedule rate plus percentage specified in sub Para VI. Provided always that if rate(s) for part(s) of the item(s) is/are not available in the Schedule of Rates specified above, the rate(s) for parts of such items shall be determined on the basis of market rate(s) prevailing during the fortnight following the date of the order plus 10% for profit and overheads.

VIII. If the rate for any altered, additional or substituted item of work cannot be determined in the manner specified in sub-paras IV to VII above, the Contractor shall within 14 days, of the date receipt of the order to carry out the said work, inform the Engineer-In-Charge the rate which he proposes to claim for such item of work, supported by analysis of the rate claimed, and the Engineer-In-Charge shall, within 90 days thereafter, after giving due consideration to the rate claimed by the Contractor, determine the rate on the basis of market rate(s). In the event of the Contractor failing to inform the Engineer-in-Charge within the stipulated period of time, the rate which he proposes to claim, the rate for such item shall be determined by the Engineer-In-Charge on the basis of market rate(s).

IX. A) Except in case of items of work below ground surface, as it exists at the time of commencement of work (see IX (b) below) provisions contained in sub-clause IV

to VIII above shall not apply to contract, altered or substituted items as individually exceed the deviation limit specified in Schedule 'A' subject to the following

- i. Deviation limit shall apply to individual items. The variation limit shall be +25% on higher side and – 50% on the lower side of the BOQ. However, for earthwork excavation, hard rock excavation variation limits will be  $\pm 100\%$ .
- ii. The value of additions of items, of any individual trade not already included in the Contract, shall not exceed 10% of the tendered value of work, subject to overall deviation limit as provided in IX (a) above.

Provided further that in case where the original item is substituted, the Substituted Item shall be deemed to have replaced the original item in the contract itself to that extent and above provisions pertaining to the deviation shall apply with respect to such Substituted Item and not the original item.

b) In case of items of work below ground surface as it exists at the time of commencement of work, quantities of which may change due to site conditions, provisions contained in sub-clause IV to VIII above shall not apply to;

- i. The value of any item of any individual trade which exceed by more than the percentage mentioned in Schedule 'A' of the value of that trade, included in the Contract, as a whole, unless the Contractor and the Engineer-In-Charge agree to a higher percentage for any particular item.
- ii. the value of item not included in the Contract in excess of 10% of the tendered value.

**Note:** - Individual trade means sub-heads into which the Schedule of Quantities as provided in the Contract has been divided and in the absence of any such provisions in the Contract, the sub-heads as given in the Schedule of Rates.

j) **Determination of Rates:**

In the case of contract items, substituted items, contract-sub-substituted items, or additional items which exceed the limits laid down in sub-para J(IX) above, the Contractor may, within fourteen days of receipt of order or occurrence of the excess, claim revision of the rates, supported by proper analysis, for the work in excess of the above mentioned limits, provided that if the rates so claimed are in excess of the rates specified in the Scheduled of Quantities or of those derived in accordance with the provisions of sub-para J(IV) to J(VII) by more than five percent, inform the Engineer-In-Charge and the Engineer-In-Charge shall within ninety days of receipt of claim supported by analysis, after giving consideration to the analysis of the rates submitted by the Contractor, determine the rates on the basis of market rates and if the rates so determined exceed the rates specified in the Schedule of Quantities or those derived in accordance with the provisions of sub-paras J(IV) to J(VII) by more than five percent, the Contractor shall be paid in accordance with the rates so determined. In the event of the Contractor failing to claim revision of rates within the stipulated period, or if the rates determined by the Engineer-In-Charge within a period of ninety days of receipt of the claim supported by

analysis are within 5% of the rates specified in the Schedule of Quantities or of those determined in accordance with the provisions of sub-paras J(IV) to J(VII)., the Engineer-In-Charge shall make payment at the rates as specified in the Schedule of Quantities or those already determined under sub-paras J(IV to VII) for the quantities in excess of the limits laid down in sub-para J(IX).

**k) Suspension of Works**

- 1) The Contractor shall, on receipt of the order in writing of the Engineer-In-Charge suspend the progress of the works or any part thereof for such time, and in such manner as the Engineer-In-Charge may consider necessary for any of the following reasons:
  - I. on account of any default of the Contractor, or
  - II. for proper execution of the works or part thereof for reasons other than the default of the Contractor, or
  - III. for safety of the works or part thereof,

The Contractor shall, during such suspension, properly protect and secure the works to the extent necessary and carry out the instructions given in that behalf by the Engineer-In-Charge.

- 2) If the suspension is ordered for reasons (ii) and (iii) in Sub para (1) above, the Contractor shall be entitled to an extension of the time only equal to the period of every such suspension plus 25%.
- 3) If the works or part thereof is suspended on the orders of the Engineer-In-Charge for more than 90 days at a time, except when suspension is ordered for reason (1) (i) above, the Contractor may after receipt of such order serve a written notice on the Engineer-In-Charge requiring permission within fifteen days from receipt by the Engineer-In-Charge of the said notice, to proceed with the works or part thereof in regard to which progress has been suspended and if such permission is not granted within that time, the Contractor, if he intends to treat the suspension, where it affects only a part of the works as an omission of such part by "MIDHANI" under paras (j & k) or where it affects the whole of the Works, as an abandonment of the works by "MIDHANI" shall within 10 days of expiry of such period of 15 days give notice in writing of his intention to Engineer-In-Charge. In the event of the Contractor treating the suspension as an abandonment of the Contract by "MIDHANI" he shall have no claim to payment of any compensation on account of any profit or advantage which he may have derived from the execution of the work in full but which he could not derive in consequence of the abandonment. He shall, however, be entitled to compensation, as the Engineer may consider reasonable, in respect of salaries and/or wages paid by him to his employees and labour at Site, remaining idle in consequence and of materials collected which could not be utilized on the works, adding to the total thereof the percentages mentioned in Schedule A to cover indirect expenses of the Contractor, provided the Contractor submits his claim supported by the details to the Engineer-In-Charge within 28 days of the expiry of the period of 90 days.

**8. Over payments & under payments**

- a. Wherever any claim for the payment of a sum of money to "MIDHANI" arises out of or under this Contract against the Contractor, the same may be deducted by "MIDHANI" from any sum then due or which at any time thereafter may become due to the Contractor under

this Contract and failing that under any other Contract with "MIDHANI" or from any other sum due to the Contractor from "MIDHANI" which may be available with "MIDHANI" or from his 5% deduction from each running bill; or he shall pay the claim on demand.

**b.** "MIDHANI" reserves the right to carry out post payment audit and technical examination of the final bill including all supporting vouchers, abstracts etc. "MIDHANI" further reserves the right to enforce recovery of any overpayment when detected, notwithstanding the fact that the amount of the final bill may be included by one of the parties as an item of dispute before an arbitrator appointed under of this Contract and notwithstanding the fact that the amount of the final bill figures in the arbitration award.

**c.** If as a result of such audit and technical examination any overpayment is discovered in respect of any work done by the Contractor or alleged to have been done by him under the Contract, it shall be recovered by "MIDHANI" from the Contractor by any or all of the methods prescribed above. If any under-payment is discovered, the amount shall be duly paid to the Contractor by "MIDHANI".

**d.** Provided that the aforesaid right of "MIDHANI" to adjust over payments against amounts due to the Contractor under any other Contract with "MIDHANI" shall not extend beyond the period of two years from the date of payment of the final bill or in case the final bill is a MINUS bill, from the date the amount payable by the Contractor under the MINUS final bill is communicated to the Contractor.

**e.** Any amount due to the Contractor under this Contract for under-payment may be adjusted against any amount then due or which may at any time thereafter become due before payment is made to the Contractor, from him to "MIDHANI" on any other Contract or account whatsoever.

**f.** The Contractor shall be deemed to have given its consent for adjustment of the dues payable to the contractor in other contracts of "MIDHANI", against the liability or outstanding dues in respect of this contract. Similarly, the Contractor gives its consent to adjust/set off the dues payable in this contract against the outstanding dues recoverable by "MIDHANI" from the contractor in other contract of "MIDHANI".

**g.** All sums payable by way of compensation under any of the conditions of contract shall be considered as reasonable compensation to be applied to the use of "MIDHANI" without referenced to the actual loss or damage sustained and whether or not any damage shall have been sustained.

**h.** The R.A bill will be considered as an advance payment against the final bill. The Engineer will have a right to adjustment of any error, over/under payments in subsequent bills.

- 9. a) Security Deposit (S.D):** The successful tenderer has to deposit 5% of contract value as Security Deposit within 21 days from the receipt of order, interest @12% p.a. shall be levied for the period of delay in submission of S.D. beyond 21 days. This 5% Security Deposit can be submitted online through bank or can deposit Bank Guarantee from any nationalized bank. The validity of B.G shall be equivalent to contract period plus three months extra. The 5% Security Deposit will be released after completion of work, Site clearance and cleaning by the contractor duly certified by Engineer- In- Charge.

**Bank Account Details:**

**Current Account Name :** Mishra Dhatu Nigam Limited

**Bank Name :** HDFC Bank Limited



**Branch Name** : Lakdikapul

**IFSC Code** : HDFC0000021

**Account Number** : 00210330000440

b) A sum of 5% of gross value of work order will be deducted from each running bill and final bill. The same will be released after the completion of defect liability period of 06 months and after certification of Engineer –In- Charge. Also, contractor can submit Bank Guarantee for equivalent amount in the prescribed format issued by nationalized or scheduled bank and same shall be valid for defect liability period + 3 months claim period.

**10. TIME and Extension for Delay:**

Time is essence of contract and as such, the contractor shall strictly adhere to the time schedule specified in the tender documents / work order. Also, the contractor shall provide all documents, working drawings, employing technical experts time to time to keep the progress of work in good process enabling to complete the contract in time.

**The entire work of “Civil works involved in extension & renovation of Forge shop wash rooms(G.F + F.F)”, MIDHANI” to be completed within 90 Days (Staggered) from date of handover of site.**

Time is essence of the contract; contractor has to mobilize materials & labour to complete within stipulated time period.

**10.1** The time allowed for execution of the works as specified above or the extended time shall be the essence of the Contract. The execution of the works shall commence from the 10th day after the date on which “MIDHANI” issues written orders to commence the work or such time period as mentioned in the Letter of Award or from the date of handing over of site whichever is later. If the Contractor commits default in commencing the execution of the work as aforesaid; “MIDHANI” shall without prejudice to any other right or remedy be at liberty to bring in force BSD

**10.2** As soon as possible after the Contractor is concluded the Engineer-In-Charge and the Contractor shall agree upon a Time and Progress Chart. The Chart shall be prepared in direct relation to the time stated in the Contract document for completion of items of the works. It shall indicate the forecast of the dates of commencement and completion of various trades or sections of the work and may be amended as necessary by agreement between the Engineer-In-Charge and the Contractor within the limitations of time imposed in the Contract documents. Such defined intermediate milestones will form the basis for monitoring the progress and to initiate such corrective/penal measures as may be decided by the Engineer-In-Charge which shall be final & binding. Further to ensure good progress during the execution of the work, the Contractor shall in all cases in which the time allowed for any work exceeds 30 days (same for special jobs) complete 1/8<sup>th</sup> of the whole of the work before 1/4<sup>th</sup> of the whole time allowed in the Contract has elapsed; 3/8<sup>th</sup> of the work before one half of such time has elapsed and 3/4<sup>th</sup> before 3/4<sup>th</sup> of such time has elapsed.

**10.3** If the work(s) be delayed by:

Employer

Contractor

**a. Force majeure:**

If at any time during the continuance of this Contract, the performance in whole or in part, neither party shall be liable of performance under this Contract, any obligations under the Contract of any party, if such performance is prevented or delayed due to reasons beyond such party's control, including but not limited to acts of God, fire, flood, earthquake other natural catastrophes, any law, order, regulation, direction, action of any civil or military authority, national emergencies, insurrections, riots, war (whether declared or not), hostility, acts of the public or enemy, civil commotion, sabotage, explosion epidemic, quarantine restrictions, strikes and lock-outs, work stoppage or other labour difficulties, absence of the usual means of communication or transportation (hereinafter referred to as `eventuality`) provided however the party to which the force majeure has happened shall use commercially reasonable efforts to eliminate such an event.

Force majeure shall also be deemed in the event of any regulatory decision or government order requiring the either party to suspend its service(s) or operation(s) for any reasons whatsoever.

Notice of the happening of any such eventuality or force majeure as mentioned herein shall be given by either party to the other within fifteen (15) days from the date of the occurrence thereof along with supporting proof of the occurrence of the Force Majeure event , neither party shall, by reason of such eventuality, be entitled to terminate this Contract, nor shall either party have any claim for damages against the other in respect of such non-performance, or delay in performance, and the work under this Contract shall be resumed as soon as practicable after such eventuality has come to an end or ceased to exist, and the decision of the Purchaser as to whether the work has been so resumed shall be final and conclusive.

The party who has given such notice shall be excused from the performance or punctual performance of its obligations under the Contract for so long as the relevant event of Force Majeure continues and to the extent that such party's performance it prevented, hindered or delayed. The time for completion shall be extended by number of days the party giving notice was prevented from performing his obligation due to Force Majeure, in accordance with Clause 10(g) hereof.

Should one or both parties be prevented from fulfilling their contractual obligations by a state of force majeure lasting continuously for a period of at least six (6) months, both the parties shall consult each other regarding the further implementation of the Contract, provided always that, if no mutually agreed arrangement is arrived at within a period within three (3) months from the expiry of the six (6) months referred to above, the Contract shall be deemed to have expired at the end of the said six (6) months referred to above. The above mentioned expiry of the Contract will imply that both the parties have the obligation to reach an agreement regarding the winding up and financial settlement of the Contract..

**b.** abnormally bad weather, or heavy rains, or

**c.** serious loss or damage by fire, or

**d.** Civil commotion, local commotion of workmen, strike or lockout, affecting any of the trades employed on the work, or

- e. delay on the part of other contractors or tradesmen engaged by "MIDHANI" in executing work not forming part of the Contract, or
  - f. non-availability of stores, which are responsibility of "MIDHANI" to supply or
  - g. any other cause which, in the absolute discretion of the authority mentioned in Schedule A, is beyond the Contractor's control; then, upon the happening of any such event causing delay, the Contractor shall immediately give notice thereof in writing to the Engineer-In-Charge but shall nevertheless use constantly his best endeavors to prevent or make good the delay and shall do all that may be reasonably required to the satisfaction of the Engineer-In-Charge to proceed with the works.
- 10.4 Request for extension of time, to be eligible for consideration shall be made by the Contractor in writing within fourteen days of the happening of the event causing delay. The Contractor may also, if practicable, indicate in such a request the period for which extension is desired.
- 10.5 In any such case the authority mentioned in Schedule A may give a fair and reasonable extension of time for completion of the work. Such extension shall be communicated to the Contractor by the Engineer-In-Charge in writing, within 90 days of the date of receipt of such request, by the Engineer-In-Charge.

#### 11 **Liquidated Damages (L.D)**

If, in the opinion of the competent authority, there is a delay in completion of work due to the reasons attributable to the contractor or any failure of contractor in any way whatsoever, Liquidated damages at 1% per week delay or part thereof up to maximum of 10% of contract sum will be deducted.

However, the competent authority in his opinion felt that the work is delayed due to reasons which is solely attributable to MIDHANI and absolutely beyond the control of the contractor, shall grant the fair & reasonable extension of time to the contractor. The decision of the competent authority in this respect will be final & binding on the contractor.

- i. If the Contractor fails to maintain the required progress in terms of Clause 10 or to complete the work and clear the site on or before the Contract or extended date of completion, the Contractor shall, without prejudice to any other right or remedy available under the law to "MIDHANI" on account of such breach, pay as agreed compensation amount calculated as stipulated above or such smaller amount as be fixed by the authority mentioned in Schedule 'A' (Whose decision shall be final & binding) on the Contract Value of the work for every week that the progress remains below that specified in Clause 10 or that the work remains incomplete.

This will also apply to items or groups of items for which separate period of completion has been specified.

For this purpose, the term 'Contract Value' shall be the value at contract rates of the work as ordered.

- ii. Completion period (as originally @ 0.5% per week stipulated) not exceeding 21 months.
- iii. Provided always that the total amount of damages for delay to be paid under this clause shall not exceed 7.5% of the total value of the work done or of the Contract Value of the item or group of items of work for which a separate period of completion is specified.

iv. The amount of compensation may be adjusted or set-off against any sum payable to the Contractor under this or any other contract(s) with "MIDHANI". For the purpose of such adjustment/set off, it shall be deemed that the Contractor has given its free consent.

**v. Reduction of Liquidated Damages:**

If before the completion of the whole of the works or any part of the works has been certified by the Engineer-in-Charge as completed as per the time stipulated hereof and occupied or used by the employer, the value of the whole of the works for the purpose of calculating the liquidated damages shall be reduced by the value of the part so certified by the Competent Authority.

**12. Defects Liability Period**

The Contractor shall be responsible to make good and remedy at his own expense within such period as may be stipulated by the Engineer-In-Charge, any defect which may develop or may be noticed before the expiry of **06 months** from the certified date of completion and intimation of which has been sent to the Contractor within ten days of the expiry of the said period by a letter sent by hand delivery or by registered post.

**13. ARBITRATION:**

In the event of any dispute or difference relating to the interpretation and application of the provisions of commercial contract(s) between Central Public Sector enterprises (CPSEs)/ Port Trusts inter se and also between CPSEs and Govt Dept. /Organisation (excluding disputes concerning Railways, Income Tax, Customs & Excise Dept.), such disputes or differences shall be taken up by either party for resolution through AMRCD as mentioned in DPE OM No. 4(1)/2013-DPE(GM)/FTS-1835 dt 22.05.2018

All disputes or differences arising out of or in connection with the Contract, including the ones connected with the validity of the Contract or any part thereof, shall be settled by bilateral discussions.

Any dispute(s) or difference(s) whatsoever arises under or out of or in connection with Contract, or in respect of any defined legal relationship associated therewith or derived there from, the parties agree resolve/settle the same by submitting that dispute to arbitration in accordance with the International Centre for Alternative Dispute Resolution (ICADR) Arbitration Rules 1996.

The authority to appoint the arbitrator(s) shall be the International Centre for Alternative Dispute Resolution (ICADR).

The international centre for alternative dispute resolution will provide administrative services in accordance with ICADR Arbitration Rules 1996.

The language of the arbitration proceeding shall be English. The place of arbitration proceedings shall be Telangana, India.

In respect of PSUs/Government organizations, the DPE guidelines issued from time to time shall be applicable.

Work under the contract shall be continued by the contractor during the arbitration proceedings, unless otherwise directed in writing by the Purchaser or unless the matter is such that the work cannot possibly be continued until the decision of the arbitrators is obtained, and save as those which are otherwise expressly provided in the Contract, no payment due or payable by the purchaser shall be withheld on account of such arbitration proceedings, unless it is the subject matter or one of the subject matter thereof.

Work under the Contract shall be continued by the Contractor during the arbitration proceeding, unless otherwise directed in writing by the Purchaser or unless the matter is such that the work cannot possibly be continued until the decision of the arbitrators is obtained, and save as those which are otherwise expressly provided in the Contract, no payment due or payable by the Purchaser shall be withheld on account of such arbitration proceedings, unless it is the subject matter or one of the subject matters thereof.

14. **Language shall be English:** All documents relating to the bid shall be in the English language.
15. **CANCELLATION OF CONTRACT FOR DEFAULT OF THE CONTRACTOR:**
- a) If the contractor makes default in commencing the service within the time specified, or if; the contractor in the opinion of MIDHANI during the current contract makes default in proceeding with the contract services which includes construction for completion of civil construction works of the project or progress of the services is slow, or the services are poor of, if the contractor fails to comply with any of the terms and conditions of the contract, or fails to complete the services in part or full or fails to achieve the progress as set out under the contract or abandons the contracts or otherwise commits any breach of contract, MIDHANI will cancel the contract as a whole or in part without any prior notice to the contractor at the sole cost, risk and expense of the contractor and get the balance services/work executed either by MIDHANI itself, or by another contractor or through any other agency/agencies as deemed fit. In such an event, the contractor shall be liable to make good and compensate all losses, expenses whatsoever, incurred or to be incurred by MIDHANI besides forfeiture SD / 5% gross value deducted from each running bill.
- b) In the event of cancellation of contract as above and the completion of the contract services either by MIDHANI or by another contractor or through any other agency / agencies, if the cost of completion works out less than the cost under this contract, the advantage shall accrue to MIDHANI.
16. **CANCELLATION OF CONTRACT FOR DEATH ETC.,**  
Without prejudice to any of the rights or remedies under this contract, if the contractor dies or attains legal disability, MIDHANI shall have the option of canceling the contract without any compensation to the contractor or any his legal heirs / successors and without any prior notice.

**16.1 SPECIAL POWERS OF CANCELLATION OF CONTRACT / FORECLOSURE OF CONTRACT:**

If at any time after acceptance of the tender/ during award of work, during currency of contract, MIDHANI feels that for any reasons whatsoever, if the whole or any part of the contract services is not required to be carried out, notice shall be given in writing of the fact to the contractor and upon receipt of such notice the contractor shall stop the execution of such services as indicated in the notice forthwith. The contractor shall have no claim to any payment of compensation or otherwise whatsoever on account of any profit or advantage which he might have derived from the execution of the services in full, but which he did not derive in consequence of the foreclosing of the services / contract. Contractor shall be paid at contract rates for the full amount of the work executed including such additional services as may be rendered necessary by said foreclosing.

16.2 In the event of contractor commits any breach of any terms of this contract, MIDHANI will terminate the contract and on such termination, the balance work will be got done through other agency at the cost and risk of contractor. Further, any loss occurred due to the above will be recoverable from the contractor.

16.3 The contractor shall further keep indemnified and harmless against any claims or liabilities arising out of eventualities in connection with injuries / death to the workmen or any member engaged by or under the control of contractor. MIDHANI will not have any liabilities under the Employee's compensation Act or any other provision of law statutory or otherwise. Any expenditure incurred by MIDHANI in this connection shall have to be fully indemnified by the contractor.

16.4 (a) Recoveries shall also be affected from the contractor on account of any over payment detected at any stage as a result of technical examination, audit study, vigilance inspection / investigation.

(b) Recoveries shall be affected from the contractor on account of any losses suffered under the provision of section – 73 of the Indian Contract Act 1982.

(c) The contractor will be liable for debar from the future contracts for a specified number of years or total ban depending on the gravity of the lapses.

**17 ORDERS UNDER THE CONTRACT AND COMMUNICATION OF ORDERS:**

All orders, notices etc. to be given under the contract shall be in writing and if sent by registered post to the contractor to any of the addresses given by the Tenderer or to the last known address of the Tenderer, shall be deemed to have been served on him. Any communication under this contract on any matter whatsoever under the signature of Senior Manager / Dy. General Manager / Engineer in-charge or any officer authorized by General Manager(Projects), MIDHANI, Hyderabad for such communication shall be deemed to have been issued with the approval of the Accepting officer.

**18 DEFECTIVE SERVICE/WORK:**

Any defects observed or otherwise brought to the notice of the Engineer-in charge of MIDHANI be investigated or caused to be investigated in detail by any of the reputed institutes / specialist organizations approved by the MIDHANI at the cost and risk of the

contractor. The defective work/services will be rectified by the contractor immediately at his own cost.

It shall be incumbent upon the contractor to propose remedial measures thereof and obtain the acceptance of the reputed approved institute or the specialist organization to such measures before the corrective action is allowed to be undertaken.

#### 19 **Quality of materials & Workmanship and Tests**

All materials & workmanship shall be of the respective kinds described in the contract & in accordance with the Engineer's-In-Charge (E-I-C's) instructions and shall be subjected from time to time to such tests as E-I-C's or his representative may direct at the place of manufacture or fabrication or on site or at all or any such places/approved laboratories. The entire cost of such tests will be borne by the contractors. For bought out items, the contractor shall produce the manufacturer's certificate or test certificate. The contractor shall provide at his own cost such assistance, instruments, machines, labour and material as are normally required for examining, measuring & testing any work and the quality, weight or quantity of any material used & shall supply samples of materials before incorporation in the works for testing, as may be selected and required by the E-I-C's or his representative.

#### **Cost of Samples**

- a. All samples shall be supplied by the Contractor at his own cost.
- b. The cost of making any test shall be borne by the Contractor if such test is clearly intended by or provided for (as mentioned in code & specification), in the Contract.

#### 20 **Labour**

- 20.1 The Contractor shall employ labour in sufficient numbers to maintain the required rate of progress and of quality to ensure workmanship of the degree specified in the Contract and to the satisfaction of the Engineer-In-Charge. The Contractor shall not employ in connection with the works any person who has not completed eighteen years of age.
- 20.2 The Contractor shall furnish to the Engineer-In-Charge, fortnightly a distribution return of the number and description by trades of the workers employed on the works.

The Contractor shall also submit on the 4<sup>th</sup> and 19<sup>th</sup> of every month to the Engineer-In-Charge a true statement showing in respect of the preceding fortnight, (i) the accidents that occurred during the said fortnight showing the circumstances under which they happened and the extent of damage and injury caused by them and (ii) the number of female workers who have been allowed maternity benefit as provided in the Maternity Benefit Act, 1961 or Rules made there under and the amount paid to them.

- 20.3 The Contractor shall pay to labour employed by him either directly or through sub-contractors, wages in accordance with the rules, regulations and the law in force relating to the payment of wages for the workers and also to monitor the compliance of rules, statutory payments etc by the sub contractor.
- 20.4 The Contractor shall comply with the provisions of the Payment of Wages Act, 1936, the Minimum Wages Act, 1948, The Employer's Liability Act, 1938, The Employee's Compensation Act, 1923, The Industrial Disputes Act, 1947, The Maternity Benefit Act,

1961, The Factories Act 1948, The Contract Labour (Regulation & Abolition) Act, 1970, or any modification thereof or any other law relating thereto and rules framed there under from time to time.

- 20.5** The Contractor shall be liable to pay his contribution and the employees contribution to the State Insurance Scheme & Provident Fund in respect of all labour employed by him for the execution of the Contract, in accordance with the provisions of “The Employees State Insurance Act, 1948” and EPF & MP( Employee’s Provident Fund & Minimum Provision act of 1952) as amended from time to time. In case the Contractor fails to submit full details of his account of labour employed and the contribution payable, the Engineer-In-Charge shall recover from the running bills of Contractor an amount of contribution as assessed by him. The amount so recovered shall be adjusted against the actual contribution payable for Employees State Insurance & EPF & MP Act.
- 20.6** The Engineer-In-Charge shall, on a report having been made by an Inspecting Officer as defined in the Contractor Labour (Regulation & abolition) Act 1970, have the power to deduct from the moneys due to the Contractor Labour Regulations, have the power to deduct from the moneys due to the Contractor any sum required or estimated to be required for making good the loss suffered by a worker(s) by reason of non-fulfillment of the conditions of the Contract for the benefit of worker(s), non-payment of wages or of deductions made from his or their wages which are not justified by the terms, of the Contract or non-observance of the said Contractors Labour Regulations.
- 20.7** In every case in which by virtue of the provisions sub-section(1) of Section 12, of The Workmen’s Compensation Act, 1923, “MIDHANI” is obliged to pay compensation to a workman employed by the Contractor, in execution of the works, “MIDHANI” will recover from the Contractor the amount of the compensation so paid, and, without prejudice to the rights of “MIDHANI” under sub-section (2) of Section 12, of the said Act, “MIDHANI” shall be at liberty to recover such amount or any part thereof by deducting it from the 5% deduction from each running bill or from any sum due by “MIDHANI” to the Contractor whether under this contract or otherwise. “MIDAHNI” shall not be bound to contest any claim made against it under sub-section (1) of Section 12 of the said Act, except on the written request of the Contractor and upon his giving to “MIDHANI” full security for all costs for which “MIDHANI” might become liable in consequence of contesting such claim.

## **21.Compliance and Default**

1. In the event of the Contractor committing a default or breach of any of the provisions of the aforesaid Contractor’s Labour (Regulation & Abolition) act 1970 as amended form time to time or furnishing any information or submitting or filling any Form/Register/Slip under the provisions of these Regulations which is materially incorrect, then on the Report of the Inspecting Officer as defined in the Contractor Labour (Regulation & abolition) act 1970, the Contractor shall without prejudice to any other liability pay to “MIDHANI” a sum not exceeding Rs.200/- for every default, breach or furnishing, making, submitting, filling, such materially incorrect statement and in the event of the Contractor’s default continuing in this respect, the penalty may be enhance to Rs.200/- per day for each day of default subject to a maximum of five percent of the estimated cost of the works put to tender. The Engineer-In-Charge shall deduct such amount from bills or 5%



deduction from each running bill of the Contractor. The decision of the Engineer-In-Charge in this respect shall be final and binding.

2. Contractor shall at his own expense comply with or cause to be complied with Model Rules for Labour Welfare or rules framed by the Government from time to time for the protection of health and for making sanitary arrangements for workers employed directly or indirectly on the works. In case the Contractor fails to make arrangements as aforesaid, the Engineer-In-Charge shall be entitled to do so and recover the cost thereof from the Contractor.
3. The Contractor shall at his own expense arrange for the safety provisions as appended to these conditions (Safety Code) or as required by the Engineer-In-Charge in respect of all labour directly or indirectly employed for performance of the works and shall provide all facilities in connection therewith. In case, the Contractor fails to make arrangements and provide necessary facilities as aforesaid, the Engineer-In-Charge shall be entitled to do so and recover the cost thereof from the Contractor.
4. Failure to comply with Model Rules for Labour Welfare, Safety Code on the provisions relating to report on accidents and to grant of maternity benefits to female workers shall make the Contractor liable to pay to the "MIDAHNI" as the penalty an amount not exceeding Rs.200/- for each default or materially incorrect statement. The decision of the Engineer-In-Charge in such matters based on reports from the Inspecting Officers as defined in the Contractor Labour Regulation( RLA) Act 1970 shall be final and binding and deduction(s) for recovery of such penalty may be made from any amount payable to the Contractor.
5. **If the contractor performs any work in a manner contrary to the Contract, without the approval of the Engineer-In-Charge, the Contractor shall bear all the costs arising there from and shall be responsible for all losses to the employer arising there from.**

## 22. Vulnerability Atlas of India:

### **Proposed Clause to be included in Tenders w.r.t, Vulnerability Atlas of India**

#### **Clause: Planning and Designing in purview of Vulnerability Atlas of India**

Vulnerability Atlas of India (VAI) is a comprehensive document which provides existing hazard scenario for the entire country and presents the digitized State/UT —wise hazard, maps with respect to earthquakes, winds and floods for district-wise identification of vulnerable areas. It also includes additional digitized maps for thunderstorms, cyclones and landslides. The main purpose of this Atlas is its use for disaster preparedness and mitigation at policy planning and project formulation staae.

This Atlas is one of its kind single point source for the various stakeholders including policy makers, administrators, municipal commissioners, urban managers. engineers, architects, planners, public etc. to ascertain proneness of any city/location/site to multi-hazard which includes earthquakes, winds, floods thunderstorms, cyclones and landslides. While project formulation, approvals and implementation of various urban housing, buildings and infrastructures schemes, this Atlas provides necessary information for risk analysis and hazard assessment.

The Vulnerability Atlas of India has been prepared by Building Materials and Technology Promotion Council under Ministry of Housing and Urban Affairs, Government of India and available at their website [www.bmtpc.org](http://www.bmtpc.org).

it is mandatory for the bidders to refer Vulnerability Atlas of India for multi-hazard risk assessment and include the relevant hazard proneness specific to project location while planning and designing the project in terms of:

- i) Seismic zone (II to V) for earthquakes.
- ii) Wind velocity (Basic Wind Velocity: 55, 50, 47, 44, 39 & 33 m/s)
- iii) Area liable to floods and Probable max. surge height
- iv) Thunderstorms history
- v) Number of cyclonic storms/ severe cyclonic storms and max sustained wind specific to coastal region
- vi) Landslides incidences with Annual rainfall normal
- vii) District wise Probable Max

**PROFORMA OF BANK GUARANTEE IN LIEU OF SECURITY DEPOSIT IN INDIVIDUAL CONTRACT**

(ON NON JUDICIAL STAMP PAPER)  
(CLAUSE NO. 9)

To,

Mishra Dhatu Nigam Ltd.

.....  
.....

In consideration of the Mishra Dhatu Nigam Ltd. Having its registered office at ..... (hereinafter called "MIDHANI" which expression shall unless repugnant to the subject or context include its administrations, successors and assigns) having agreed under the terms and conditions of the Award Letter bearing number ..... Dated ..... issued by the MIDHANI, which has been unequivocally accepted by the contractor M/s. .... work ..... (hereinafter called the said contract) to accept a Dead of Guarantee as herein provided for Rs ..... (Rupees ..... Only) from a Nationalized Bank in lieu of the 5% deduction from each running bill to be made by the contractor or in lieu of the deduction to be made from eh Contractor's bills, for the due fulfillment by the said contractor of the terms and conditions contained in the said contract.

We, the ..... Bank (hereinafter referred to as "the said Bank" and having our registered office at ..... do hereby undertake and agree to indemnify and keep indemnified "MIDHANI" from time to time to the extent of Rs ..... (Rupees ..... only) against any loss or damage, cost, charges and expenses caused to or suffered by or that may be caused to or suffered by "MIDHANI" by reason of any breach or breaches by the said contractor of any of the terms and conditions contained in the said contract and to unconditionally pay the amount claimed by "MIDHANI" on demand and without demur to the extent aforesaid.

We ..... Bank, further agree that "MIDHANI" shall be the sole judge of and as to whether the said contractor has committed any breach or breaches of

"Refer note at the end of the proforma.

Any of the terms and conditions of the said contract and the extent of loss, damage, costs, charges and expenses caused to or suffered by or that may be caused to or suffered by "MIDHANI" on account thereof and the decision of "MIDHANI" that the said Contractor has committed the breach or breaches and as to the amount or amounts of loss, or that may be caused to or suffered by "MIDHANI" from time to time shall be final and binding on us.

1. We, the said Bank further agree that the Guarantee herein contained shall remain in full force and effect during the period that would be taken for the performance of the said contract and till all the dues of "MIDHANI" under the said Contract or by virtue of any of the terms and conditions governing the said contract have been fully paid and its claims satisfied or discharged and till the owner certificate that terms and conditions of the said contract have been fully and properly carried out by the said contractor and accordingly discharges this Guarantee subject, however, that "MIDHANI" shall have no claim under the Guarantee after 90 (Ninety) days from the date of expiry of the Defects Liability Period as provided in the said contract, i.e. ....

Employer

Contractor

(date) or from the date of cancellation of the said contract as the case may be, unless a notice of the claim under this Guarantee has been served on the Bank before the expiry of the said period in which case the same shall be enforceable against the Bank notwithstanding the fact, that the same is enforced after the expiry of the said period.

2. "MIDHANI" shall have the fullest liberty without affecting in any way the liability of the bank under this Guarantee or Indemnity, from time to time, to vary any of the terms and conditions of the said contract or to extend time of performance by the said contractor or to postpone for any time from time to time any of the powers exercisable by its against the said contractor and either to enforce or forbear from enforcing of the terms and conditions governing the said contract or securities available to "MIDHANI" and the said bank shall not be released from its liability under liberty with reference to the matters aforesaid or by reason of time being given to the said Contractor or any other forbearance act or omission on the part of "MIDHANI" or any indulgence by "MIDHANI" to the said contractor or any other matter or thing whatsoever which under the law relating to sureties would, but for this provision, have the effect of so releasing the Bank from its such liability.

3. It shall not be necessary for "MIDHANI" to proceed against the contractor before proceeding against the Bank and the Guarantee herein contained shall be enforceable against the Bank, notwithstanding any security which "MIDHANI" may have obtained or obtain from the Contractor shall at the time when proceedings are taken against the Bank hereunder, be outstanding or unrealized.

We, the said Bank, lastly undertake not to revoke this Guarantee during its currency except with the Previous consent of "MIDHANI" in writing and agree that any change in the constitution of the said contractor or the said Bank shall not discharge our liability hereunder. If any further extension of this Guarantee is required the same shall be extended to such required periods on receiving instructions from M/s .....

..... on whose behalf this guarantee is issued.

In the presence of

For and on behalf of (the Bank)

WITNESS

1. \_\_\_\_\_

Signature \_\_\_\_\_

2. \_\_\_\_\_

Name & Designation \_\_\_\_\_

\_\_\_\_\_

Authorization No: \_\_\_\_\_

Date and Place: \_\_\_\_\_

Bank's Seal \_\_\_\_\_

Accepted  
(Signature of the Officer)  
For and on behalf of  
(Mishra Dhatu Nigam Ltd.)

Employer

Contractor

**SCHEDULE "A"****REFERENCE TO GENERAL CONDITIONS OF CONTRACT**

Clause	Item	Stipulation
1	Estimated cost of the works	Rs 20.47 lakhs
-	Earnest Money Deposit (EMD)	NIL
	<b>General Contract Conditions</b>	
	<b>Chapter I</b>	
3(e)	Accepting Authority	Chairman & Managing Director, MIDHANI
3(h)	Market Rate-percentage addition to cover overheads and profit	10%
	<b>Chapter II</b>	
7(b), 7(c)	<b>Payment of bills: Three R.A Bills and one Final Bill will be paid.</b>	R.A. Bills in 15 days & final bill in 30 days from the date of certification of Engineer – In – Charge.  5% of gross value from each running bill will be deducted.
7(i)	Deviations/Variations Extent & Pricing	
K)	Suspension of work	
7(l)(2)(ii)	Percentage payable to cover contractor's indirect expenses for suspension exceeding 30 days and not exceeding 90 days	5% maximum
7(l)(3)	Percentage payable cover contractor's indirect expenses for suspension exceeding 90 days.	5% maximum
9	Security Deposit	5% for SD
10.1	Time allowed for execution of work or time schedule	90 days (Staggered) from date of site handover.
10.3(g)	Authority competent to decide if any other cause of delay is beyond contractor's control	Chairman & Managing Director
10.5	Authority for granting Extension of Time	Chairman & Managing Director
11(v)	Authority competent to reduce compensation amount	C&MD
12.0	Defects Liability Period	06 months
	<b>Special Contract Conditions</b>	
3.1	Water charges	Free issue from MIDHANI
3.2	Electricity Charges	Free issue from MIDHANI

## SPECIAL CONDITIONS OF CONTRACT

### 1.0 GENERAL:

The special contract conditions of contract shall be read in conjunction with the invitation to tender, General Conditions of contract, specification, Drawings and other supplementary documents detailing the work.

Provided that, where any provision of the General Conditions of Contract is repugnant to or at variance, unless a different intention appears, the provision of the Special Conditions of Contract shall be deemed to override the provision of the General Conditions of Contract and shall to the extent of such repugnance or variation, prevail.

### 2.0 Site and Local Conditions

#### 2.1 Location and Works Terrain

MIDHANI plant is located at Kanchanbagh in Hyderabad, Telanagana state, adjacent to the existing Defence Metallurgical Research Laboratory (DMRL). The plant is about 10 km away from Hyderabad city. The nearest main railway stations are Nampally and Kachiguda stations of Hyderabad, which are about 12 Km and 9 Km respectively from this plant.

#### 2.2 Climate Conditions

The climatic conditions at the plant are similar to the prevailing at Hyderabad city and are generally as indicated below:-

Maximum of mean daily temperature	-	40° C
Minimum of mean daily temperature	-	12° C
Absolute maximum temperature	-	45° C
Absolute minimum temperature	-	6° C
Relative humidity maximum	-	83° C
Relative humidity minimum	-	30° C
Average yearly precipitation	-	765 mm
Maximum hourly precipitation	-	about 60 mm
Maximum wind velocity	-	84 km/hr
Absolute maximum wind velocity	-	144 km/hr
Wind direction – April mainly from	-	SE and SW W and NW
May to Sept. mainly from	-	W and SW
Rest of the year mainly from	-	NE and E And SE

#### 2.3 Earthquake:

The plant is situated in Zone 'II' as defined in latest seismic maps.

#### 2.4 Transport Connections:

The plant is well connected by road. Important broad gauge railway stations are located nearby as stated earlier. Hyderabad has a commercial airport at Shamshabad, about 19Km from the plant.

#### 2.5 Communications:

Postal, telephone and Fax facilities are available as follows: -

Name of the Company : MISHRA DHATU NIGAM LIMITED

Corporate Identity Number : U14292TG1973GOI001660

Registered Office Address : P.O. Kanchanbagh, Hyderabad, 500 058

**For commercial clarifications:**

- Sri K.Mukesh, Sr. Manager (Purchase)

Mail ID: [kmukesh@midhani-india.in](mailto:kmukesh@midhani-india.in), Landline: 040-24184348

**For Technical clarifications, pl Contact:**

- Sri D.Harshavardhan, Sr. Manager(Civil)

Mobile No: 9949099524

Mail ID:- [dhvardhan@midhani-india.in](mailto:dhvardhan@midhani-india.in)

- Mrs. P.Sindusha, Manager(Civil)

Mobile no: 9154951893

[Email : Sindusha.p@midhani-india.in](mailto:Sindusha.p@midhani-india.in)

Website address : [www.midhani-india.in](http://www.midhani-india.in)

**2.6** The provision of the above information is for the Contractor's general guidance only and does not relieve him of his responsibility under clauses 6 if the General Conditions of Contract to satisfy himself of the site conditions and sufficiency of his tender. No claim whatsoever shall be admissible or any extra shall be allowed on these accounts.

**3 Construction Facilities:**

**3.1 Construction Water:**

Water required for the Works will be made available to the Contractor free of cost at one point of site. The Contractor shall make his own arrangement for drawing water/Electricity from this point and for further distribution at his own cost, with the approval of the Engineer – In – Charge.

He shall construct a storage tank at his own cost sufficient for storing enough water for his seven days requirements. No claim for compensation for any failure or short supply of water will be admissible. The Contractor shall state the requirement of water for construction in the appendix – I herein attached.

Employer do not guarantee the maintenance of uninterrupted supply of water and in case of any interruptions of such supply of water the Contractor shall be responsible for making at his own cost alternative arrangements for water. When Contractor makes his own arrangements of water required for the work, nothing shall be paid for the same by MIDHANI.

**3.2 Construction Power:**

Electric Power from sources available near the site will be made available at free of cost (415 volts, 3 phase (4 wire) 50 cycles) to the Contractor at one point at the site. Further connections, distributions, installation of the switch board, lcvs, mcvs, meters etc. shall be

arranged and maintained by the contractor at his own cost with the prior approval of the Engineer – In – Charge. The distribution system shall conform to the Indian Electricity Act 1910 and the Indian Electricity Rules, 1956 with the latest amendments. The Contractor on the completion of the Works shall remove all wiring from the switchboard and meter. He shall reinstate and make well any work disturbed by the temporary power lines at his own cost to the satisfaction of the Engineer – In – Charge.

No claim for compensation for any failure or short supply of power will be admissible. The Contractor shall indicate his requirement of electric power for lighting and construction equipment at site.

In case of forced power cuts/short supply/fault, contractor shall make his own arrangement for lighting/fabrication works without affecting the schedule of work. Nothing shall be paid for the same by MIDHANI.

### **3.3 Temporary Roads:**

The contractor shall construct and maintain at his own cost all temporary roads at the site for leading his equipment, labour, materials etc. to various places of work or otherwise deemed necessary to execute the works.

### **4 Time Schedule of Contract:**

Time is the essence of the Contract. The Contractor shall complete the whole of works according to the Contract and to the satisfaction of the Engineer – In – Charge **90 days (Staggered)** from the date of handing over of site.

The working hours for the civil works are 24 hours with special permission and safety precautions as per standing rules of MIDHANI.

### **5 Authorized Agent/ official**

5.1 The contractor shall have a duly authorized agent/official at site from the commencement of works to the completion of the works. Such agent/ official shall be authorized, on behalf of the contractor, to accept services of notices under the and to agree to extras, omissions and varied items of works and rates for the same. Such agent/ official shall maintain on his staff qualified engineers and such other personnel as may be required for efficient execution of the works. Any notice under the contract shall be deemed to have been served on the contractor if served upon such agent/ official or sent by registered letter to his address at site. Such agent/ official shall not be changed and shall not leave the site during the duration of the Contract unless the consent of the Engineer – In – Charge shall have been previously obtained. If the Engineer – In – Charge shall require the contractor to carry out any rectifications under the terms of the contract after the works are completed, the contractor shall have the same or another duly authorized agent at site when such rectifications are being carried out.

5.2 The contractor shall send a duly authorized competent representative to meet the Employer at his office at Hyderabad whenever called upon in writing to do so by the Employer or the Engineer – In – Charge and any instructions, directions or explanations given by the Engineer – In – Charge to such representative shall be held to have been given to the Contractor.

### **6 Construction Stores:**

6.1 Suitable areas at or near site will be allocated free of cost by the Employer at his discretion to the contractor for field offices, storing equipment, plant, materials etc. for the duration of



the contract. The contractor will be solely responsible for the watching and guarding of his stores.

6.2 The contractor shall cover all his equipment and materials at site with requisite insurance against theft, larceny, dacoit, fire, tempest, flood, earthquake etc.

## **7 Accommodation for Labour and Supervisory Staff:**

The contractor shall make his own arrangements for the accommodation of his labour and supervisory personnel, for which the Employer will allocate no open land. The contractor shall include in his rates the cost of provision of such accommodation for the laborers and supervisory staff including suitable water supply, electricity and good sanitary arrangements. The sanitary arrangements provided must conform to the rules and regulations of local authorities or public bodies.

## **8 Compliance with Enactments:**

The Contractor shall comply with the provisions of the following Acts and Rules:

- a. The Contract Labour (Regulation & Abolition) Act 1970 or any amendment thereof and Rules made there under and all legislations and rules of the State or Other local Authority framed from time to time. The Rules and other statutory obligations with regard to wages, welfare and safety measures, maintenance of all required registers etc will be deemed to be part of the contract. Such Registers shall be produced by the Contractor for inspection as and when required by MIDHANI or Labour Department Authorities or other statutory bodies.
- b. The Contractor must possess valid license obtained for RLC (central) under Contract Labour (R&A) Act and Rules for employing contract labour on the date of the submission of tender form in case of engagement of contract labour. It is mandatory to implement the GOs issued by the Government from time to time on payment of wages.
- c. The Provisions of the Minimum Wages Act 1948 and Payment of Wages Act 1936 as amended from time to time and rules made there under.
- d. Industrial Disputes Act
- e. Employee's Compensation Act 1923 or any other law for the time being in force.
- f. Equal Remuneration Act.
- g. The Provisions of ESI Act and EPF & MP Act and the rules made there under in respect of the workmen engaged by him.

## **9 Construction Equipment:**

9.1 The contractor shall make his own arrangements to procure all constructional plants and equipments for the work. He shall state in the Appendix II the type and number of different equipment in good working conditions, with their capacities, which he will use on the site to ensure the completion of the works in the specified time.

9.2 All materials, construction plants and equipment etc once brought by the contractor on the site are not to be removed from there without the written authority of the Engineer – In – Charge. Also the contractor shall have adequate stock of spare parts for the equipment on the site and the works shall not be delayed on this account. All temporary works built by the contractor for the main construction undertaken by him are not to be dismantled and removed without written authority of the Engineer – In – Charge.

**10 Co-operation with other contractors:**

The contractor shall plan and execute his work in a phased manner as directed by the Engineer – In – Charge from time to time and shall fully co-operate with other agencies working at site simultaneously so as not to obstruct or retard the works simultaneously being executed by other agencies in any way. The decision of the Engineer – In – Charge on any point of dispute between the various contractors shall be final and binding on all the parties concerned.

**11 Safety Code:**

The contractor shall at his own expense, arrange all the requirements including safety gears for the safety provisions as appended to these conditions, or as required by the Engineer – In – Charge in respect of all labour directly or indirectly employed for the performance of the works and shall provide all facilities in connection therewith. In case the contractor fails to make the arrangements and to provide necessary facilities as aforesaid, the Employer shall be entitled to do so and recover the cost thereof from the contractor. The contractor will abide all the safety norms of MIDHANI & other statutory bodies.

**12 Cleaning Site:**

The contractor shall clean the site as required of grass, trees, vegetation and debris prior to the start of the work at his own cost.

**13 Clearing Site on completion:**

On completion of the works, the site shall be cleared by the contractor of all men, materials, temporary sheds, debris, rubbish, plants and equipments belonging to the contractor at his own cost. The site and surroundings shall be handed over in a clean and neat condition as required by the Engineer – In – Charge. In case of failure by the contractor, the Employer will get the site cleared at the risk and cost of the contractor. The work may not be considered complete till the contractor clears the site in all respect as mentioned above.

**14 Coverage of Contract:**

- 14.1 The contract is a complete one including all the cost towards labour, materials, the contractor's overhead and profit, all temporary works & all other provisions, equipments, tools tackles, transportation, handling, all taxes & duties etc.
- 14.2 Except where it is expressly provided that the cost will be borne by the Employer the various obligations of the contractor under the contract shall be at the cost of the contractor.

**15 Transfer of guarantees:**

All guarantees such as waterproofing, acid resisting, materials etc for the entire works as obtained from the manufacturer or specialist agencies shall be transferred to the Employer through the Engineer – In – Charge by the contractor prior to the acceptance of such works. The applicator/manufacturer also will remain the co-guarantor.

**16 Security Regulations:**

The contractor shall abide by all the security regulations promulgated by the Employer & all other statutory authorities from time to time. In order to facilitate the issue of entry/ exit gate permits for materials and equipment to be taken out after completion of the work the contractor shall submit a list of equipment and/or other materials that may be taken inside the protected area from time to time.

## **17 Miscellaneous:**

### **17.1 Variation Statement:**

Quantity variation (up to  $\pm 20\%$ ) statement shall be prepared by the contractor and submitted to Engineer – In – Charge for Employer approval. Such variation statement shall be submitted at the stage when the Running Account Bills value (up to date) exceeds the contract value and also for variations in scope of work.

### **17.2 Part rates:**

The part rates recommended by Engineer – In – Charge in the Running Accounts Bills for the items of works in progress shall be binding on the contractor.

## **SPECIFICATIONS FOR - CIVIL WORKS**

### **PREAMBLE TO SPECIFICATIONS**

The conditions of contract and the drawings shall be read in conjunction with the specifications and matters referred to shown or described in one are not necessarily repeated in the other. These specifications are comprehensive and may exceed the requirements of this project. Any ambiguity between the General specifications, the Bill of

quantities and contract drawings shall be referred to the Tenderer for clarification not later than 10 days before the date fixed for delivery of Tenders. Any ambiguity may be referred to the Tenderer after signing of the contract and Tenderer shall give a ruling which shall prevail. No claim for additional cost due to above, however, will be entertained.

Notwithstanding the sub-division of the specification into various headings, every part of it is to be deemed supplementary to every other part and is to be read with it, so far as it may be practicable so to do, or when the context so admits.

In this contract, reference is made to the Indian Standards and these references shall be deemed to include the latest editions or issue of standards, specifications or By-Law including all revisions up to the date of invitation of Tenders. The contractor shall ensure that all materials and workmanship in so far as they apply to this contract shall comply in every specifications or any other equivalent or specification approved by the Tenderer.

The Contractor shall kept at site copies of all relevant standards and codes of practice referred in these specifications throughout the period of contract. These shall be the latest editions and shall include all revisions/addendums thereof.

Approved Manufacturers: Name of approved manufacturers are given in the specifications.

Reference in the specifications to approved manufacturers shall be constructed as establishing standard of quality and not as limiting completion.

The Contractor shall include in his prices for supplying the item or materials from the approved manufacturers listed or on approval.

All items or materials shall be delivered to the site in the manufacturers original unopened containers with the manufacturers brand and name clearly marked on.

All items or materials shall be assembled, mixed, fixed, applied or otherwise incorporated in the works in accordance with the printed instructions of the manufacturer of the item or materials.

## 1.0 GENERAL

### 1.1 Scope

This specification applies to the CIVIL Engineering and building works to be executed by the Contractor. It is to be read in conjunction with and subjects to the general conditions of contract and in conjunction with the drawings, the schedule of rates and such other documents as may from time to time be agreed upon as comprising part of this contract. Where these specifications are not clear, CPWD specifications shall be followed.

### 1.2 Clearing

The contractor shall clear the site of all rubbish and old buildings remove all grass and low vegetation and remove all bush wood, trees, stumps of trees and other vegetation only

after consultation with the Architects as to which bushes and trees shall be saved. All disused foundations, drains or other obstructions met with during excavation shall be dug out and cleared.

### **1.3 Site Levels**

The contractor shall carry out the survey of the site and shall establish sufficient number of grids and level marks to the satisfaction of the Architects who shall decide on the basis of this information the general level of the plot and the plinth.

### **1.4 Bench-marks**

Prior to commencement of construction the contractor shall in consultation with the Engineer, establish several site datum bench-marks their number depending on the extent of the site. The bench-marks shall be sited and constructed so as to be undisturbed throughout the period of construction.

### **1.5 Site investigation**

The Architects might have got the soil investigation done and if so, the report will be handed over to the contractor for their scrutiny. The contractor shall however inspect the site and study the findings from the trial pits or bores in order to assess the problems involved in and methods to be adopted for excavation and earth work. The contractor shall ascertain for himself all information concerning the sub-soil conditions, Ground water table periods and intensity of rainfall, flooding of the site and all data concerning excavation and earth work.

### **1.6 Setting out the work**

The contractor shall set out the works and during the progress of the building shall amend at his own cost any errors arising from inaccurate setting out.

During the execution of the work contractor must cross check his work with the drawings. The contractor shall be responsible for all the errors in this connection and shall have to rectify all defects and / or errors at his own cost failing which the Architect reserves the right to get the same rectified at the risk and cost of the contractor.

### **1.7 Clearing up and handing over**

Upon completion of the work all the areas should be cleaned. All floors, doors, windows, surface etc. shall be cleaned down in manner which will render the work acceptable to the Architect and Employer. All and an area of up to ten meters on the outer boundaries of the premises will be cleaned by the contractor as a part of the contract. Upon completion of the project, the contractor shall submit to the employer the following.

- a. Written guarantee and certificates.
- b. Maintenance manual, if any and
- c. Keys

### **1.8 Samples**

The contractor shall submit to the Architects samples of all materials for approval and no work shall commence before such samples are duly approved. Samples of pre-cast

concrete panels, masonry units, building insulation, finished hardware, metal window and door frames, terrazzo flooring, kota stone, marble etc. and every other work requiring samples in the opinion of the Architects shall be supplied to the Architects and these samples will be retained as standards of materials and workmanship. The cost of the samples shall be borne by the contractor.

Throughout this specification, types of material may be specified by manufacturers' name in order to establish standard of quality, price and performance and not for the purpose of limiting competition. Unless specifically stated otherwise, the tenderers may assume the price of 'approved equivalent' except that the burden is upon the contractor to prove such equality in writing.

A detailed programme shall be submitted by the contractor for the material approvals, within four weeks of the Architects order to commence. The detailed programme shall include but not be limited to:

Date/s of submitting the various material samples.

Dates/s by which the MIDHANI's approval is required.

Date/s of placing orders on the Manufacturers/Suppliers.

Date/s of arrival of the approved material/s on to the site.

Date/s of the completion of the 'Mock-ups' wherever required, and the Date/s by which the Architects' inspection of such 'Mock-ups' should be completed and the Date/s by which the Architect should fully approve the said Mock-ups.

## **1.9 Tests**

All materials and methods of tests shall conform to the latest rules, regulation and/or specifications of the following authorities where specified herein as applicable. Bureau of Indian Standards (BIS), British Standards Code of practice (BS) in case no equivalent BIS is available. The Architects will have the option to have any of the materials tested and if the test results show that the materials do not conform to the specifications, such materials shall be rejected. A reasonable number of representative tests will be deemed to be included in the rates tendered.

## **1.10 Rates**

The item rates quoted in schedule of quantities are deemed to be included to execute the complete works/items in strict accordance with the relevant specifications read in conjunction with the appropriate Standard Specifications.

## **1.11 Mode of Measurements**

All measurements will be taken in accordance with IS 1200 latest issue unless otherwise specified.

## **1.12 Safety Code**

- i) Suitable scaffolding should be provided for workmen for all works that cannot safely be done from the ground or from solid construction except such short period work as can be done safely from ladders. When ladder is used an extra mazdoor shall be engaged for holding the ladder and if the ladder is used for carrying materials as well suitable foot holds

and hand holds shall be provided on the ladder shall be given an inclination not steeper than  $\frac{1}{2}$  to 1 (1/2 horizontal) and 1 vertical).

- ii) Scaffolding or staging more than 3 Mtrs. Above the ground or floor, swung or suspended from an overhead support or erected with stationary support shall have a guard rail properly attached, bolted, braced and otherwise secured at least 0.9 Mtrs, high above the floor or platform or such scaffolding or staging and extending along the entire length of the outside and ends thereof with only such opening as may be necessary for the delivery of materials. Such scaffolding or staging shall be so fastened as to prevent it from swaying from the building or structure.
- iii) Working platform, gangways and stairways should be so constructed that they should not sag unduly or unequally and if the height of the platform or the gangway or the stair way is more than 3 Mtrs. Above ground level or floor level they should be closely boarded should have adequate width and should be suitably fenced as described in Para (ii) above.
- iv) Every opening in the floor of a building or in a working platform be provided with suitable means to prevent the fall of persons or materials by providing suitable fencing or railing whose minimum height shall be 1 Mtr.
- v) Safe means of access shall be provided to all working platforms and other working places. Every ladder shall be securely fixed. No portable single ladder shall be over 9 Mtrs. In length while the width between side rails in rung ladder shall in no case be less than 29 cms for ladder up to and including 3 Mtrs in length. For longer ladders this widths should be increased by at least 6 mm for each additional 30 cms. Adequate precautions shall be taken to prevent danger from electrical equipment. No materials on any of the site of work shall be so stacked or placed as to cause danger or inconvenience to any person. The contractor shall provide all necessary fencing and lights to protect the public from accident and shall be bound to bear the expenses of defense of every suit, action or other proceeding at law that may be brought by any person for injury sustained owing to neglect of the above precautions and to pay any damages and cost which may be awarded in any such suit action or proceedings to any such persons or which may with the consent of the contractor be paid to compromise any claim by any such person.
- vi) Excavation and trenching: All trenches 1 meter or more in depth shall at all times be supplied with at least one ladder for each 30 Mtrs in length or fraction thereof. Ladder shall be extended from bottom of the trench to at least 1 Mtr above the surface of the ground. The side of the trenches which are 1.5 Mtr or more in depths shall be stepped back to give suitable slope or securely held by timber bracing so as to avoid the danger of sides collapse. The excavated materials shall not be placed within 1.5 Mtrs of the edges of the trench or half of the depth of the trench whichever is more. Cutting shall done from top to bottom. Under no circumstances undermining or undercutting shall be done.
- vii) Before any demolition work is commenced and also during the process of the work:
  - a. All roads and open areas adjacent to the work site shall either be closed or suitably protected in consultation with the Employer.
  - b. No electric cable or apparatus which is liable to be a source of danger or a cable or apparatus which is liable to be used by the operator shall remain electrically charged.

- c. All practical steps shall be taken to prevent danger to persons employed from risk of fire or explosion or flooding. No floor, roof or other part of the building shall be so overloaded with debris or materials as to render it unsafe.
- viii)** All necessary personal safety equipment as considered adequate by the Architect should be kept available for the use of the person employed on the site and maintained in condition suitable for immediate use and the contractor should take adequate steps to ensure proper use of equipment by those concerned.
- a. Workers employed on mixing asphaltic material, cement and lime mortars shall be provided with protective foot wear and protective goggles.
- b. Those engaged in white washing and mixing or stacking of cement bags or any material which is injurious to the eyes shall be provided with welders' protective goggles.
- c. Those engaged in welding work shall be provided with welders protective eyesight lids.
- d. Stone breakers shall be provided with goggles and protective clothing and seated at sufficiently safe intervals.
- e. When workers are employed in sewers and manholes which are in use the contractor shall ensure that the manhole covers are opened and are ventilated at least for an hour before the workers are allowed to get into the manholes and the manholes so opened shall be cordoned off with suitable railing and provided with warning signals or boards to prevent accidents to the general public.
- f. The contractor shall not employ men below the age of 18 years and women on the work of painting with products containing lead in any form. Whenever men above the age of 18 are employed on the work of lead painting the following precautions should be taken:
- I. No paint containing lead or lead products shall be used except in the form of paste or readymade paint.
- II. Suitable face masks should be supplied for use by the worker when paint is applied in the form of spray on a surface or when paint is dry-rubbed and scrapped.
- III. Overalls shall be supplied by the contractors to the workmen and adequate facilities shall be provided to enable the working painter to wash during the cessation of work.
- ix)** When the work is done near any place where there is a risk of drowning all necessary equipments should be provided and kept ready for use and all Necessary steps taken for prompt rescue of any person in danger and adequate provision should be made for prompt First Aid treatment of all injuries likely to be sustained during the course of work.
- x)** Use of hoisting machines and tackle including their attachments anchorage and supports shall conform to the following standards of conditions.
- a. These shall be of good mechanical construction, sound material and adequate strength and free from patent defect and shall be kept in good working order.



- b. Every rope used in hoisting or lowering materials or as a means of suspension shall be of durable quality and adequate strength and free from patent defects.
2. Every crane driver or hoisting appliance operator shall be properly qualified and no person under the age of 21 years should be in charge of any hoisting machine including any scaffolding or to give signals to operator.
3. In case of every hoisting machine and of every chain ring hook, shackle survival and pulley block used in hoisting or as means of suspension of safe working load shall be ascertained by adequate means. Every hoisting machine and all gear referred to above shall be plainly marked with the safe working load. In case of a hoisting machine having a variable safe working load each safe working load of the conditions under which it is applicable shall be clearly conditions under which it is applicable shall be clearly indicated. No part of any machine or any gear referred to above in this paragraph shall be loaded beyond the safe working load except for the purpose of testing.
4. In case of departmental machines the safe working load shall be notified by the Electrical Engineer concerned.
- xi) Motors, gearing, transmission, electric wiring and other dangerous parts of hoisting appliances should be provided with such means as will reduce to the minimum the risk of accidental descent of the load, adequate precautions should be taken to reduce to the minimum the risk of any part of a suspended load becoming accidentally displaced when workers employed on electrical installations which are already energized, insulating mats, wearing apparel, such as gloves, sleeves and hat as may be necessary should be provided. The workers should not wear rings, watches and carry keys or other materials which are good conductors of electricity.
- xii) All scaffolds, ladders and other safety devices mentioned or described herein shall be maintained in safe condition and no scaffold, ladder or equipment shall be altered or removed while it is in use. Adequate washing facilities should be provided at or near places of work.
- xiii) The safety provisions should be brought to the notice of all concerned by displaying on a notice board at a prominent place at work spot. The person responsible for compliance of the safety code shall be named therein by the Contractor.
- xiv) To ensure effective enforcement of the rules and regulations relating to safety precautions, the arrangements made by the Contractor shall be open to inspection by the Labour Officer, Engineer – In – Charge or the department or their representatives.
- xv) Notwithstanding the above Clause from (i) to (xiv) there is nothing in these to exempt the contractor from the operations of any other Act or Rule in force in the Republic of India.

## **2 EARTH WORK**

### **2.10 General**

This specification deals with the clearance of the Site of works and preparation of the same to commence the proposed construction activities. Wherever applicable, this is deemed to include all preliminary works like Dismantling / Demolition, site Clearance, General Leveling etc.

The contractor shall visit the site, inspect the same and decide for himself the nature of the ground and the sub-soil to be excavated. No claim on account of extras will be entertained in consequences of any misunderstanding or incorrect information or ignorance's of the existing conditions.

## 2.20 Excavation in all Soils

Excavation and / or removal of any other material on the site, shall be carried out accurately to the lines, levels and dimensions shown in the drawings or as ordered by the Architect so as to allow proper and efficient concrete work and other work in clean and dry condition. The method of excavation shall be at the discretion of the Architect/EIC but should the dimensions of any excavation exceed those shown on the drawings or ordered by the Architect or should the sides collapse the contractor shall fill such extra space with concrete or other approved material at his own expenses.

All founding levels will be inspected by the Architect before the concrete is placed. Records of all foundation levels shall be submitted by the contractor to the Architect/EIC.

The final 150 mm depth of excavation shall be taken out by hand unless otherwise permitted by the Architect. Extra depth of excavation, if any, beyond those shown in the drawings or ordered by the Engineer, shall be filled up with Grade 10 concrete.

The contractor shall excavate any soft patches or rock outcrops below the founding level and refill with M10 concrete. The founding stratum shall be leveled and rammed to the satisfaction of the Architect/EIC before concrete is placed.

Foundations within any one building shall not rest on soil strata with differential bearing capacities. Strip foundations shall not be stepped along the length of the foundations. When excavating for individual footings at different levels care shall be taken not to disturb the bearing stratum of the higher foundations. The excavations bottom shall be watered as directed by the Architect/EIC before the foundations are laid.

## 2.30 Excavation in Rock

### Classification of Rock

Rock, which is in solid beds, which can only be removed either by blasting or by wedging or chiseling, shall be treated as hard rock. An isolated boulder or detached rock measuring one cubic meter or more shall also be treated as hard rock, if the same cannot be removed without blasting, wedging or chiseling.

All other rock formation, which can be removed without blasting, wedging or chiseling, shall be classified as soft rock. However the Engineer-in-charge decision regarding classification shall be binding.

**No Blasting is allowed in case of rock interruption, however chemical or mechanical splitters are allowed.**

## 2.40 Trimming of Slopes

All slopes shall be trimmed by hand or mechanically true to line and profile and consolidated to the Architects/EIC satisfaction. Any rock or boulders appearing on the face or likely to be unstable shall be removed and the void thereof filled with approved material and compacted.

## 2.50 Shoring / Earthwork support

If required, the contractor shall shore and strut the sides of excavation to the satisfaction of the Architect. Should there be any slips or settlement notwithstanding the shoring the contractor shall make good the same at his own expense with concrete or other approved material as directed by the Architect. Shoring shall be removed gradually side by side with backfilling to prevent any settlement and under no circumstances until such time as the foundation concrete has hardened enough to take any loads brought on by the removal. Under special circumstances shoring shall be left in place if so directed by the Architect/EIC.

## 2.60 Dewatering

All excavation shall be kept free from water from any source. The contractor shall provide and clear away on completion all drains, pumps and other equipment for this purpose. The contractor shall be responsible for preventing any subsidence of adjoining ground due to pumping.

Contractor at his own cost shall keep site dewatered till all construction works in basement and other areas are completed including waterproofing. **No amount shall be claimed by the contractor as the rates are deemed to have been included for total dewatering.**

## 2.70 Contractor to keep excavation clear

Should any sand, mud, weed, rubbish or other materials be deposited on excavated area by sandstorm, rain, flood, landslips or from any cause whatsoever such materials shall be removed by the contractor at his own expense.

## 2.80 Back filling

All materials used as fill shall be to the Architects approval. Filling materials shall be well graded clean stone, Gravel and other approved non-plastic granular material, all not more than 100 mm in any direction and shall be well consolidated in layers not more than 150 mm thick. Final compacting must be done just before concrete is to be laid.

All fill materials shall be compacted at a moisture content appropriate to the material being used. The compacted filling shall achieve a density which shall not be less than 95% of the maximum dry density obtained. Filling shall be free of any wood, organic matter or any other deleterious material.

Sand, soil, gravel etc. from the excavation may be used for back filling of pits and trenches or for making up levels subject to approval of the Engineer – in – charge and subject to selection of proper materials. The contractor shall take instructions of the Architect

regarding the location in which each type of excavated material is to be used according to its quality.

In case the excavated materials are not approved for backfilling either totally or in part or if their quantity falls short of the quantity required for filling suitable materials shall be brought to site from an approved source.

### **2.90 Disposal of surplus**

Surplus excavated materials and all excavated materials rejected for backfilling shall be carted at least 1.5km away from the site and spread where directed within the lead of one km by the local authorities / architect/EIC in layers not more than 250 mm thick each layer being adequately watered and rolled or rammed as directed.

### **2.10 Sweet Earth**

The Sweet earth for plantation areas shall be from an approved source and shall be mixed with natural or artificial manure as directed by the Architect.

### **2.11 Measurements**

- i) Where excavation is in trenches or from borrow pits in firmly uniform ground measurements of cutting in trenches or borrow pits shall be made to the outer line of building wall.
- ii) Diagonal ridges, cross ridges or dead man shall be left in position shown by the Engineer - in- Charge to enable accurate measurements being taken on the completion of one work where the ground is not uniform or where the site is required to be leveled levels shall be taken before the start of the work and after the completion of the work and the quantity of excavation in cutting computed from these levels.
- iii) Where soil, soft rock and hard rock are mixed the measurements for the entire excavation shall be computed from the levels as described (ii) above.
- iv) Wherever rock excavation is encountered contractor will be paid only up to required level and any extra excavation if carried out due to any reason no payment shall be done for the extra quantity.

## **3.0 CONCRETE WORKS**

### **3.1 General**

All concrete included in the works shall comply with the General requirements of this section of the specification except where those requirements are modified by the provisions of later Clause relating to specialized uses for concrete in which case the requirements of those Clauses shall take precedence.

### **3.2 Supervision**

A competent person shall be employed whose first duty will be to supervise all stages in the preparation and placing of the concrete. All test on materials, the making and testing of cubes and the maintenance and calibration of all mixing and measuring plant shall be carried out under his direct supervision.

### **3.3 Materials**

**a. Cement****I. Types**

The cement used shall be ordinary Portland cement of 53 grade conforming to relevant IS for all works except where specifically mentioned in the Drawings, Bill of Quantities and / or directed by the Engineer-in-Charge.

All cement shall be fresh when delivered. Cement shall be delivered in sound and properly secured bags or other packages ready for immediate use and shall be used direct from the bag. The contractor shall maintain for Architects/EIC inspection a record of receipts and consumption of cement indicating the source, the age and the date of receipt of cement. Cement containing lumps, which cannot be broken by a light touch of fingers, shall not be used in the works. Admixtures shall not be used without written consent of the Architect/EIC.

**II. Sources**

Cement shall be obtained from sources, which are approved by the Architect/ EIC. Makes and sources of cement shall generally not to be varied from those used for trial mixes and if a change be unavoidable, the contractor shall submit this proposal for the prior approval of the Architect/EIC. Unless otherwise directed by the Architect/EIC, Cement of different kinds shall not be mixed at any stage.

**III. Manufacturers' Test Certificates for Cement**

The contractor shall supplied the certified copy/original of manufacturer certificate to the Architect/EIC within 48 hours of the arrival of cement & which shall not be later than 14 days from the day of delivery of the relevant consignment. The test certificate shall be related to the date of delivery at site of consignment. The frequency of deliveries shall be such as to ensure that no cement is more than three months old when used in the works.

**IV. Samples of Cement**

Samples of cement to be used in the works shall be deposited with the Architect/EIC for his approval together with a certificate stating the name and address of the Manufacturer the name and address of the supplier from whom it was purchased. The Architect/EIC may from time to time take samples of the cement being used in the works for testing.

**V. Storage of Cement**

The contractor shall provide a proper separate weatherproof store building with raised floor for cement on the site and shall at all times protect the cement from damp or any other deleterious influences. Each consignment of cement shall be kept separately and the contractor shall be careful to ensure the consignments are used in the order in which they are received.

**b. Aggregates**

- I. All aggregates (coarse & Fine) shall be conforming to IS 383 & shall be obtained from the approved source known to produce aggregates of required size satisfactory for concrete and shall be chemically inert, strong, hard, durable of limited porosity and free from

adhering, coating, clay lumps, coal residues and organic or other impurities that may cause corrosion of reinforcement or may impair the strength or durability of the concrete. Aggregates shall be tested in accordance with the requirements of IS: 383 or IS: 515 and the results of such tests shall be as hereinafter specified, the percentages being by weight unless the context indicates otherwise.

- II. Fine aggregates shall be natural sand or sand derived by crushing material like gravel or stone and shall be free from coagulated lumps (50% Robo sand is allowed for RCC works and 100% Robo Sand is allowed for PCC works). Sand derived from stone unsuitable for coarse aggregates shall not be used as fine aggregates. The caustic soda test for organic impurities shall show a color not deeper than that of the standard solution. The amount of fine particles as ascertained by the Laboratory Sedimentation test shall not exceed 5% for crushed stones. The settling test for natural sand or crushed stone shall be made and after being allowed to set in for three hours the thickness of the layer of silt deposited on the coarse material shall not exceed 10%.

The grading of a natural sand or crushed stone i.e. fine aggregate shall be such that not more than 5 (five) percent shall exceed 4.75 mm in size not more than 10% shall pass IS sieve No. 150 not less than 45% or more than 85% shall pass IS size No. 1.18 mm and not less than 25% or more than 60% shall pass IS sieve No. 600 micron.

Only washed sand of quality and grading specified herein above shall be used. Admixture of sand obtained by crushing natural stone may be permitted by the Architect provided the mixture satisfies the requirements for the fine aggregates here in above specified. But not more than one part of the sand obtained by crushing natural stone may be added to Four parts of washed sand.

### III. **Coarse Aggregate**

Coarse Aggregates shall be crushed stone. The pieces shall be angular, rounded in shape and shall have granular or crystalline or smooth (but not glossy) non-powdery surface. Fragile, flaky and laminated pieces and mica shall not be present.

The "Aggregates Crushing Value" shall not exceed 45%. The amount of fine particles occurring in a free state or as a loose adherent shall not exceed 1%. When determined by the laboratory sedimentation test, after twenty four hours immersion in water. A previously dried sample of the coarse aggregate shall not have gained in weight more than 5%.

The grading of coarse aggregate shall be such that not more than 5% shall be larger than 20 mm and not more 10% shall be smaller than 5 mm and not less than 25% or more than 55% shall be smaller than 10%.

Maximum size of coarse aggregate shall be of 20 mm unless otherwise noted.

The grading of coarse aggregate of nominal size of 40 mm shall be such that not more than 5% shall be larger than 40 mm and not more than 5% shall be smaller than 5 mm and not less than 10% or more than 35% shall be of 10 mm size.

Aggregate (Fine and Coarse) shall be thoroughly washed with clean water if so directed by the Architect/EIC.

## 3.4 **Steel Reinforcement**

### Type

Steel for bar and fabric reinforcement shall conform to mild steel of tested quality conforming to IS: 432 (Latest) or high yield strength deformed bar conforming to IS: 1786 or 1139 (Latest) or TMT as specified in the drawings or directed by EIC. The steel shall be kept clean and free from pitting, loose rust, mill scale, oil, grease, earth, paint or any material which may impair the bond between the concrete and the reinforcement or which may cause corrosion of the reinforcement or deterioration of the concrete. Fabric reinforcement (IRC weld mesh or equivalent) shall be delivered to site in flat sheets only.

### **Storage of Reinforcement**

Before and after bending reinforcement shall be stored on raised racks in separate lots by size and type and protected from damage, contamination and the effects of the weather. For the purposes of identification each lot shall be marked plainly and securely by approved methods.

### **Fabrication**

Fabrication shall be accurately done to the dimensions; spacing and minimum cover as per structural drawings. Spacers shall be of cement mortar (1:1&1/2) cubes. MS chairs, spacer bars shall be used in order to ensure accurate positioning of reinforcement. All joints in mild steel reinforcement up to and including 16 mm dia shall be overlapped. The length of overlap for tension and compression joints in steel reinforcement above 16 mm diameter may be welded if permitted by the Architects/EIC in writing.

### **Welded Laps**

Whether specified, welded laps can be provided. The welding of bars shall be carried out as per IS: 2751 – 1979, IS: 9417 -1979. Before doing welding of bars at site, the contractor shall make minimum 3 joints and get them tested in an approved laboratory at his own cost. The following precautions shall be taken;

- a) If the cold twisted deformed bar has an untwisted end at lapping point then this portion shall be cut off prior to welding.
- b) Bars shall be free from rust at joints to be welded.
- c) Bars shall be aligned and kept in proper axis in order to minimize crookedness in bar after welding.

All the authorized laps will be measured & paid in the reinforcement item.

## **3.5 Water Type**

Water for mixing concrete shall be clean and free from harmful material and comply with the requirements of Clause 4.3 of IS: 456 (Latest Revision).

Water shall be brought only from sources approved by the Engineer in-charge and shall be of potable quality.

### **Testing of water**

Prior to the commencement of the works or whenever there is a change in the source of supply or when directed by the Architect the contractor shall arrange for samples of water

for mixing concrete to be submitted to an independent Government authorized testing laboratory acceptable to the Architect/EIC for tests to determine that the water complies with this specification and is satisfaction in all other respects for the manufacture of high quality concrete.

### 3.6 Grades and Strength Requirements of Concrete

#### General

Concrete shall consist of the material described under previous sections using separate coarse and fine aggregate in an appropriate combination determined in the course of the preparation of mix design described hereinafter. The overall grading shall be such as to produce a concrete of the specified quality, which will work readily in to position without segregation and without the use of excessive water. In the case of mass concrete or blinding concrete specified by nominal mix the use of 'all – in' (20mm and down) aggregate may be approved by Architect.

#### Slump

Only sufficient water shall be added to the cement and aggregate during mixing to produce concrete having a sufficient workability to enable it to be well consolidated to be worked in to the corners of the shuttering and around the reinforcement to give corners of the shuttering and around the reinforcement to give the specified surface finish and to have the specified strength. Water cement ratio shall be maintained as per IS: 456-2000 when a suitable amount of water has been determined, the resulting consistency shall be maintained throughout the corresponding parts of the work and tests shall be conducted to ensure the maintenance of this consistency according to the standard method of test for consistencies of concrete (slump test) as below:

<u>Description of work</u>	<u>Maximum slump in mm</u>
Road works	20 to 40 mm
Beams and slabs	50 mm to 100mm
Normal RCC works	75mm to 150mm
Mass concrete work	Up to 50mm
Water storage tank	80mm to 120mm

#### Concrete Grades

Grades of concrete used in the works shall be shown on the drawings or as directed by the Architect/EIC. For each grade of concrete the requirement will be as per IS 456 latest revision.

### 3.7 Batching and Mixing

The quantity of cement, the quantity of fine aggregate and the quantities of the various sizes of coarse aggregate should be measured by weight.



A separate weighting device should be provided for weighting the cement. Alternatively, the cement may be measured by using a whole number of bags in each batch, 50 kg. Bag cement contains 35 Ltrs.

The amount of water should be measured by volume or by weight. Any solid admixtures may be measured by volume or weight.

The batch weights of aggregate should be adjusted to allow for moisture content typical of the aggregate being used.

The accuracy of the measuring equipment should be within plus or minus 3% of the quantity of cement, water or total aggregates being measured and within plus or minus 5% of the quantity of any admixture being used. All measuring equipment should be maintained in a clean, serviceable condition.

The mixing time should not be less than that used by the manufacturer in assessing the mixer performance. In the case of mixes of low workability or high cement content this may not ensure maximum strength, and it may be advisable to determine a satisfactory mixing time by comparing the strength of samples mixed for different times. However in no case shall it be less than 2 minutes.

A mixer shall be cleaned out before any further concrete is mixed.

- a. When it has been out of use for more than 10 minutes, of
- b. When the class of concrete to be mixed is changed.

Hand mixing will only be permitted in exceptional circumstances and then with the specific arrangement of the Architect.

No water shall be added to mixed concrete other than the quantity of water allowed for in the mix design and incorporated in batching, unless with the approval of the Architect. Concrete or mortar which has commenced to set shall not be remixed with additional water and in no circumstances shall such concrete or mortar be used in the work.

### **3.8 Transporting Concrete:**

Concrete and mortar shall be transported speedily in watertight skips, trucks or barrows, and deposited in its place in the works without contamination, loss of ingredients or segregation. If segregation has never the less occurred during transport, the materials shall be remixed before deposit. Skips shall be large enough to contain an integral number of batches from the mixer. Any trucks or barrows shall have pneumatic tyres. In no case shall a period of more than 30 minutes elapse between the first wetting of cement in a batch and the completed use of the concrete or mortar in the works, the contractor shall arrange his mixing, transporting, placing, compacting and finishing techniques accordingly. No concrete shall be placed in the works until the contractors proposed method of transporting concrete have been approved. When chutes convey concrete the equipment shall be of such size and design as to ensure a continuous flow in the chute. The chute shall be of metal or metal lined and if four or more lengths are used they all shall have approximately the same slope. If the distance of the discharge end of the chute above the surface of the concrete is more than 1 meter, a spout or "elephant trunk" shall be used and the lower end positioned as near to the surface of deposit as practicable. The chute or "elephant trunk" shall be thoroughly cleaned before and after each run. The debris and any water used shall be discharged outside the forms.

### **3.9 Concrete placement**

#### **General**

Concrete when deposited shall have a temperature of not less than 5° C (41 ° F) and not more than 32 ° C (90° F).

The concrete shall be placed in the positions and sequences indicated on the drawings in this specification and or as directed by the Architect/EIC.

Contractor shall give adequate notice to the Architect of his intention to concrete any section of the works.

Except where otherwise directed concrete shall not be placed unless the representative of the Architect is present and has previously examined and approved the positioning, fixing and condition of the reinforcement or any other items to be embedded and the cleanliness, positioning and suitability of the concreting surface.

The concrete shall be deposited as nearly as possible in its final position. It shall be placed in such a manner as to avoid segregation of the concrete and displacement of the reinforcement, other embedded items, or formwork. It shall be brought up in horizontal layers not exceeding 45 dia mm in compacted thickness unless otherwise authorized or directed by Architect. Concrete shall not be placed simultaneously on each side of large horizontal specified or approved construction joints.

Shuttering for walls or thin sections of considerable height shall be provided with openings or other devices that will facilitate the cleaning of the accumulation of hardened concrete on the shutters or on the metal reinforcement above the level of the concrete and the removal of concrete in the case of segregations.

#### **Placing concrete in cold/Hot weather**

No concrete shall be mixed or placed while the temperature is above 40° C on a rising thermometer or below 4° C. on a falling thermometer. The contractor shall supply an accurate maximum and minimum thermometer and hang it in an approved position on the works. Aggregates that have been exposed to frost shall not be used until completely thawed. Concrete shall be maintained by approved means at a temperature of not less than 4° C. during placing, and for a period of three days thereafter. All concrete placed during cold weather or when a frost is predicated or is likely to occur or occurs contrary to expectation shall be protected from freezing by approved means.

#### **Placing of concrete in wet weather**

Concrete shall not be mixed and or placed in rainy weather or when there is likelihood of impending heavy showers. If it becomes necessary to place concrete during rainy weather the contractor shall provide adequate protection by means of tarpaulin or similar other water proof material to immediately cover fresh concrete to prevent rain falling over it. This protection shall be left on the concrete for a period of 24 hours after placing of concrete.

**3.10 Concrete placement under water**

Concrete placed under water shall be deposited through a Tremmie pipe the diameter of which shall be at least 8 times the size of the largest aggregate used in the concrete mix.

The Architect shall approve the construction of and the method of handling the tremmie pipes. The pipes shall be waterproof and sufficiently strong to withstand severe handling conditions and any joints must be sealed with adequate gaskets.

At the commencement of Tremmie work the bottom of the pipe shall be sealed before being lowered in to position. The concrete being placed shall only break the seal. The concrete placed in contact with a horizontal construction joint shall have a lower proportion of coarse aggregate and a higher proportion of cement than the remainder of the concrete. The proportion shall be agreed with the Architects' Representative.

All underwater concrete shall be placed in still water within a cofferdam or formwork, which shall extend above water level.

The proportions of the mixes shall be agreed in accordance with the strength and workability required by the specification. To allow for losses an addition of 10% of cement shall be added to mixes of concrete scheduled to be placed under water.

**3.11 Maintenance of plant and Equipment**

The contractor shall keep all weight batching machines, mixing machines, compressors, vibrators and other plant and equipment for concrete and mortar work clean well maintained and adjusted and where appropriate, shall check the accuracy of the measuring devices at regular intervals, all to the approval of the architects'. Representative Mixer blades shall be replaced when worn down by 10- 20 min.

**3.12 Night Work**

Concrete shall not be mixed, placed, compacted or finished during the hours of darkness, except where necessary to complete a pour. However, concreting in darkness for these exceptions shall be only after obtaining the express permission in writing from the Architects' representative and in his presence only.

Immersion vibrator shall be of approved type and shall have frequency of not less than 10000 oscillations per minute. They shall penetrate the full depth of the concrete to be vibrated and be immersed at sufficiency close spacing so that the whole volume of the concrete is satisfactorily and uniformly compacted.

Where the underlying layer is of fresh concrete, immersion vibrators shall also penetrate that layer to ensure homogeneity. Immersion vibrators shall be withdrawn slowly to prevent formation of voids. Vibrators shall not be used to work the concrete along the moulds or in such a way as to damage or other embedded items. Those who have received proper instruction and training in their use shall only operate immersion vibrators.

External vibrators shall be of approved type and shall have a frequency of not less than 3000 oscillations per minute. They shall be securely and rigidly clamped to the shuttering. External vibrators shall only be used on shuttering which is strong enough to withstand the vibration without displacement, distortion or other damage.

The contractor shall ensure that sufficient standby vibrators and ancillary equipment are available during concreting operations.

### 3.13 Quality Control

- i) In order to ensure that the quality of materials and the mix proportions are suitable for the particular grade of concrete required are so maintained, sampling and testing shall be carried out regularly during the course or the works.
- ii) As frequently as the Architects'/EIC representatives may require and in any case at least once a day while concreting is in progress the contractor shall sample and carryout a determination of the moistures content and a mechanical analysis of the fine aggregate and each nominal size of coarse aggregate shall lie within the respective limits specified and should be fraction of aggregate in the sieve differ from the corresponding fraction of aggregate in the approved mix by more than 2% of the total quantity of fine and coarse aggregate the Engineer-in-charge may instruct the contractor to modify the relative proportions of the aggregates in the mix immediately to allow for such differences.
- iii) Workability testing shall be carried out in accordance with IS: 456. The results shall lie within the range up on which the accepted mix design is based. Testing shall be carried out at such a frequency that the required workability is consistently achieved.
- iv) Samples of concrete shall be taken at random in accordance with IS: 516 at the time and place of deposition of the concrete at a frequency of sampling for each grade of concrete and from each concrete mixing plant at six cubes of 150 mm nominal size per 50 cubic meters of concrete placed in the works or twice per week.
- v) Notwithstanding the foregoing additional samples shall be taken by the contractor when directed by the Architect. The test cube procedure shall be in accordance with IS: 516 throughout.
- vi) Compliance with the specified characteristic strength shall be assumed if:
  - a. Each of the six cubes in a group has a test strength no less than the characteristic Strength or,
  - b. Not more than one cube has test strength less than the specified characteristic strength but not less than 85% of the specified characteristic strength and the average strength of the group of four test results is not less than the specified characteristic strength plus the standard deviation of the group.

### 3.14 Seven day cube tests:

Acceptance of concrete is based on the 28<sup>th</sup> day results. However, the contractor shall establish a relationship between 7 days and 28 days strengths by carrying out 7 days tests at the time of performing the laboratory testing and from subsequent quality control testing. This relationship shall be used in interpreting any further test results to predict the probable value of the corresponding 28 days cube strengths. The contractor shall without delay advice the Architect of any sample that appears likely to fail to meet the specification and the contractor shall take any necessary action to minimize the effect of such failure.

P.S:- Cube test shall be done at JNTU/NCBC/O.U, Hyderabad.

### 3.15 Acceptance Criteria

The general Acceptance Criteria of any and all of the concrete work shall be as per the relevant Clauses of IS: 456.

If any of the works test are not up to the standard, the Architect/EIC shall have the power to stop the work until the reason is investigated and steps taken to prevent further low results. The contractor shall not be entitled to any claims on account of such delays. Any concrete carried out from the batch that is afterwards found to be faulty, will be liable for rejection and if so directed, the contractor shall at his own expenses dismantle and replace the defective work and any work built thereon or shall take such other measures as may be deemed necessary by the Architect. At the discretion of the Architect, the contractor may be allowed to prove by means of a load test to be carried out at his own expense that the concrete is capable of safely with standing the loads as specified in test.

### **3.16 Construction joints:**

Construction joints shall be provided in the position described on the drawings or elsewhere and where not so described on the drawings or else shall in accordance with the following.

- a. A joint shall be formed horizontally at top of a foundation and 75 mm below the lowest soffit of the beams meeting at the head of a column.
- b. A joint shall be formed in the rib of a large tee beam and all beams 25 mm below the soffit of the slab.
- c. Concrete in a haunch or a splay on beam or a brace and in the head of a column where one or more beams meet shall be placed without a joint at the same time as that in the beam or beams or brace.
- d. Concrete in the splay at the junction of a wall and slab shall be placed throughout without a joint but if the provisions of a joint are unavoidable the joint shall be vertical and the middle of a span.
- e. A joint in a slab shall be vertical and parallel to the principal reinforcement where it is unavoidable at the right angles to the principal reinforcement the joint shall be vertical and at the middle of the span.
- f. Expansion joints, hinges or other permanent structural joints shall be provided in the positions and of the form described in the drawings or elsewhere. Before placing new concrete against concrete that has already hardened the face of old concrete shall be cleaned and roughened and scrubbed and loose aggregate removed from the form. Immediately before placing the new concrete the face shall be thoroughly wetted and a coating of neat cement grout applied thereto. The new concrete shall be well rammed against the prepared face before the grout sets.

### **3.17 Form Work**

#### **Form work construction**

- i) The contractor should submit detailed drawing of the centering & shuttering and get the same approved from the Architect / Client and before laying concrete also he should get the centering shuttering approved in writing before start of concreting. The concreting should be done in the scientific and methodical manner so as to give a uniform finish in line and level, so that minimum rendering or plastering is done. The work found defective should be dismantled & redone and site cleared. For removal of

centering and shuttering, the span of beam & slab has not been give, which should have been done as given on.

- ii) Form work shall be so constructed that concrete can be properly placed and thoroughly compacted. Form work shall be firmly supported and adequately strutted, brace or tied. It shall be capable of adjustment to the lines and dimensions of the finished concrete and it shall be sufficiently strong to resist without excessive distortion under the influence of the weather.
- iii) All form work shall be constructed to be rigid during the casting of concrete and constructed so that the surfaces adjacent to the concrete are with plus minus 6mm or the required surfaces when supporting the concrete and sufficiently watertight to prevent loss of liquid from the concrete and it shall be capable of being removed without shock or vibration to the concrete. Forms shall be cleaned with compressed air immediately before placing concrete to remove all rubbish. The inside faces of the form work shall be treated with a mould oil of type to be approved by the Architect and every care shall be taken to prevent mould oil from getting on to the reinforcement.
- iv) Shuttering shall be braced and strutted to prevent deformation under the weight and pressure of the wet concrete, constructional loads, wind and other forces. The deflection shall not exceed 3 mm bottoms of beams boxes shall be erected with an upward camber of 6 mm for each 3M. of span.

#### **Removal of Form work (Stripping Time)**

Unless certainly specified in the drawing or directed by the Architect the following shall be minimum intervals of time, which should be allowed between the placing of the concrete and the striking of the mould where ordinary Portland cement is used.

- |    |  |  |
|----|--|--|
| a. | Walls, columns & vertical faces<br>Of all structural members | 16 to 24 hours as may be<br>decided by EIC |
|----|--|--|

- Note: 1. for other types of cement the stripping time recommended for ordinary Portland cement may be suitably modified. If Portland pozzoland or low heat cement has been used for concrete the stripping time will be 10/7 of the period stated above.
2. The number of props left under their sizes and disposition shall be such as to be able to safely carry the full dead load of the slabs, beam or arch as the case may be together with any live load likely to occur during curing or further construction.

However, the contractor shall delay the removal of shuttering as long as necessary in order to avoid damaging the work. Where shuttering to soffit is removed prior to the props this is only permissible if the design of the shuttering allows such a sequence of operations without the props being in any way disturbed. If the shuttering and propos are not independent both must be left in place until propping is no longer required.

Where shuttering to sides is removed prior to the shuttering soffit, the side shuttering shall be removed without disturbing the shuttering to the soffit.

No concrete structure shall be loaded until the concrete is at least 21 days old and only then with the approval of the Architect and subject to such condition as may be imposed.

The contractor may be required to produce evidence that the concrete has attained strength sufficient to support the live and dead loads to which that part of the structure may

be subjected. This evidence shall consist of reports of compression tests made on job cured test cubes. The foregoing provisions of this clause shall not relieve the contractor of his responsibility to ensure that the stability and strength of any structure of part of a structure is not impaired by the release of shuttering.

### **Proposals for form work**

Not less than 8 days before the contractor proposes to construct any form work his detailed proposals thereof shall be delivered to the Architect. Proposals shall comprise all relevant information including calculations, detailed drawings, rates of placing of concrete, sequence placing of concrete and details of any external vibrators which are proposed to be used.

No form work shall be constructed until the contractors' proposals have been received and approved by the Architect.

### **Type of form work**

Four quantities of form work shall be used i.e. Rough form work and wrought form work, as noted on the Architects drawings or described hereafter.

Rough form work may be constructed of sawn timber or other materials as agreed by the Architect. The edges of the boards shall be planned or otherwise rendered grout tight. Provided it remain grout tight, rough form work may be used any number of time.

Wrought form work, to all surfaces for which a smooth fair faced finish is required shall be constructed of purpose made metal, fiber glass, waterproof ply wood panel, hardboard lined form work or of planed timber with edges shot so that tight joints can be formed which will prevent loss of liquid from the concrete. The use of a particular material for wrought form work shall be consistently maintained throughout the structure. The surfaces of the form work in contact with the concrete shall be smooth and free from all blemishes. The number of times wrought form work may be used shall be subject to the surfaces, joints and edges being clean and undamaged.

### **Surfaces of concrete**

The contractor shall ensure that the finished face of concrete offers a suitable keyed surface for the application of the finishing media, e.g. plaster, sand and cement screed etc. The contractor shall also ensure that where thin films of finished, e.g. skim coats "Snowcem", paint etc. are to be applied that the previous provisions regarding supporting of form work are complied with, so that the concrete faces to be treated are left smooth, unblemished and true to line both vertically and horizontally and require no making good before applying the finish.

Should the contractor fail however, to comply with the provision of this Clause, he shall submit details of his proposed method of redoing the situation to the Architect and must obtain written consent from the Architect to the proposals before continuing with any further work on the affected surfaces.

Tolerances in concrete surfaces.

The permissible tolerance in the surface of the hardened concrete shall not exceed the following limits:

**Type of irregularity:**

Departure of member planes from position and level	±	12mm
Variation in cross – sections	±	6mm
Sharp changes in pland	±	2mm
Departure from 3 M. template of any part of planes	±	3mm

**3.19 Curing**

Canvass, Hessian or other approved screens shall be erected at all points where concrete is being placed to shade the concrete from the direct sun or from drying winds and such screens shall be kept in position until the surface of the concrete has been protected as specified in the following Clauses. The contractor shall be responsible for removing such screens and preparing surface of concrete.

As soon as possible after it has been placed and concrete shall be covered with Hessian or other approved material to protect it from the sun all concrete surfaces shall be kept visibly wet continuously for 14 days after placement, the Hessian being kept in position throughout this period. Surfaces cast against forms shall also be kept moist and covered with Hessian for these periods if the form work is removed before the periods have elapsed.

The top surface of slab shall be kept flooded with water at all times till the curing period of 14 days is over. Columns, wall and beam sides and other surface shall be completely covered by gunny bags and kept thoroughly wet continuously for the period specified for curing. The ceiling of slabs shall be frequently sprayed with water until the end of curing period.

The contractor shall ensure that all times there is an adequate supply of fresh water available for curing the concrete.

**3.20 Examinations and Repairs**

The contractor shall not proceed with the surface finish or making good of concrete surfaces until he has received the Architects' written permission to do so and he shall not apply cement slurry or mortar or any other coating to the concrete surfaces as struck form the shuttering or do anything else which would hinder the proper inspection of the concrete by the Architect.

Concrete which is defective has honeycombs or which contains defective parts shall be cut out completely unless the Architect agrees that a repair may be satisfactorily effected. This agreement shall not preclude

Subsequent condemnation of the repaired work.

The method of repairing defective concrete, which the contractor proposes to adopt, shall be submitted to the Architect for his prior written agreement in each particular case.

No repairs or remedial work shall be carried out without prior inspection and instructions of the Architect. (No extra shall be paid to the contractor for the repair works).

**3.21 Fair face finish to concrete surfaces**

Concrete surfaces shall be finished smooth fair faced where indicated as such on the drawings. These areas shall be entirely free from honey combing, stains, fins, lapping, nail or screw marks, raised grain marks, air holes or any other imperfections. They shall also be of even texture throughout. Very slight variations between member and member may



be acceptable but any such variations within a single member cannot be tolerated. The concrete faces shall not be marked with mould oil.

The form work to these areas shall be wrought form work as specified herein.

Following inspection by the Architect the whole surface shall be rubbed down by hand. Any surfaces with major imperfections, i.e. greater than can be easily, completely and permanently obliterated by rubbing down shall be reported immediately to the Architect.

Remedial work is not normally possible to the above fair faced finish surfaces and the contractor will be required to demolish and recast defective works

### **3.22 Reinforcement Fabrication**

#### **Bending Schedules**

The Contractor shall submit to the Engineer – in – charge (E.I.C), for the E.I.C approval, bending schedule for all the works not less than Ten days before the contractor intends to bend the reinforcing steel.

The approval of the E.I.C shall in no way absolve the contractor of his responsibilities under the Contractor.

#### **Programme of reinforcement details required**

The Contractor shall provide a programme, which gives the E.I.C at least 28 days prior notification of any reinforcement details, required. The contractor shall justify the practicability of his programme to the Architect should it seem unreasonable before the programme be regarded as valid notification. If progress on site falls behind the contractor' programme, the issue of reinforcement details may be delayed by a period corresponding to the delay in construction.

#### **Bending and placing reinforcement**

Reinforcement shall be cut and bent to the shapes and dimensions shown on the finally agreed bending schedules in accordance with the requirements of IS: 2502 and to the tolerances set out therein.

Bending shall be carried out with an appliance, which provides a continuous and uniform application of the bending deformation at every section of the bend. There shall be provision for the free movement of the surface of the bar during bending and the bends shall follow the contour of the former without peaking.

High Yield reinforcement must be bent without the application of artificial heating.

Mild steel reinforcement may be sent either hot or cold but shall not be heated to a temperature greater than 85° C and if heated not cooled by quenching.

Mild steel reinforcement temporary left projecting from the concrete at construction or other joints shall not be bent out of position unless shown on the drawings or agreed by the Architect. Where such bending and subsequent re-bending takes place the radius of the bend shall not be less than 4 bar diameters.

Reinforcement shall be fixed without forcing in the position shown on the drawings within a tolerance of 5 mm or 5% of the minimum dimension of cross section, whichever be the greater and maintained so that it is not displaced during concreting or other operations.

Horizontal bars shall be supported sufficiently to prevent displacement. This may be plastic spacer, chairs bent from steel bar or by concrete blocks. The method and sufficiently of the support shall be subject to the approved of the Architect.

Where concrete blocks are used, they shall be pre-cast from concrete (not mortar) of the same class as the concrete in which they are to be embedded, except that the largest size of aggregate shall be 10 mm. Each block shall be secured to the reinforcement with wire or a clip embedded in the center of the block so that, it shall not be in contact with the shuttering or subsequently cause rust marks on the concrete.

Intersections of reinforcement shall be bound together with 16 gauge annealed soft iron binding wire.

Unless otherwise noted on the drawings, no intersections of reinforcement may be fixed by welding without the permission of the Architect. High yield and cold worked steel shall in no circumstances be welded together.

Should any difficulty arise during the placing of steel in obtaining the appropriate cover, the contractor shall immediately draw the attention of the Architect to the difficulty and shall carryout such corrective measures as the Architect may suggest.

#### **Protection of reinforcement and concrete**

The contractor shall ensure that movement of men and material subsequent to steel fixing is organized so that reinforcement is not thereby displaced.

Reinforcement left projecting from and concrete shall be protected so that there is no risk of corrosion staining to any exposed concrete surface or to any other part of the works. For this purpose a stiff grout wash will normally be acceptable to the Engineer, this wash shall be wire-brushed vigorously before further concrete is placed to remove any ill-bonded material.

## **4.0 MASONRY WORKS**

### **4.1 Brick works**

- i) The building bricks are to be the good quality table moulded kiln/Brick field burnt, bricks, hard sound, square with sharp arises, even and uniform in shape and colour free from cracks, stones, flaws and other defects conforming to BIS 1077 having minimum compressive strength of 3.6N/sq mm or 36 kg/ sq cm. Samples of bricks are to be submitted to the Architect/EIC for approval before full quantity is ordered. All supply of brick to conform to the sample approved. No brick after 24 hours immersion in water shall absorb water more than 20% of its own height.
- ii) The cement and sand shall be as described under 'Cement Concrete' and the mortar unless specified otherwise in BOQ is to be composed of one part cement to four parts of coarse sand by volume, thoroughly mixed by hand. Hydrophobic cement used in mortar shall be thoroughly machine mixed. No mortar that has started to set shall be used in the work.
- iii) Every brick shall be thoroughly soaked in water before use. Broken bricks shall not be used except as closers. The courses shall be truly horizontal and the work strictly plumb,

joints shall be broken vertically and they shall not exceed ½ "in thickness. All joints in brickwork are to be well filled with mortar.

- iv) The brickwork shall not be raised more than 12 single courses per day and shall be built in English bond, except brick on edge and half brick thick walls shall be built in stretcher bond. Except for brick on edge work the bricks shall be placed with "frog" facing upwards.
- v) all joints in brick work shall be raked out ½ " deep as the work proceeds and before the mortar sets.
- vi) The brickwork is to be carried out with all necessary setbacks, projections, cuttings and too things in conformity with the drawings.
- vii) The brick work shall be cured by watering and continuously kept wet for 10 days and the work shall be well protected during rainy season.
- viii) All uneven irregular and bad brick work poor in workmanship shall be demolished if deemed necessary by the Architect and rebuilt by the contractor at the contractors' expenses. If necessary the contractor will have to provide wooden plug etc. for his own work and for which there will be no special payment on that account. The work will have to be executed at any height and lift will not form the criterion for any extra amount.
- ix) Should any efflorescence be observed in brick work, it should be washed down by clean water and brick surface treated with such chemicals as are deemed necessary by the Architect without any extra charge and at the contractors' own expenses, till efflorescence subsides. Should the efflorescence persist the brick work shall be demolished if deemed necessary by the Architect and the work rebuilt with new bricks including making good all the work disturbed without any extra charge.
- x) **Half brick masonry**  
All brick work under minimum 110 mm thick shall be reinforced 2 Nos. 6 or 8 mm dia bars in every coarse in the bottom for the first Four courses and in every eighth coarse thereafter along with 'U' shaped 6 mm dia MS strips @ 150 mm centers shall be provided. The said bars shall be cast in or securely fixed to adjoining concrete walls or columns. Minimum 100 wide & 75 mm thick RCC band with 1:2:4 mix concrete shall be provided or as directed for this RCC & reinforcement will be paid.

#### 4.2 Hollow Block Masonry

- i) Cement concrete hollow blocks shall be made so as to conform IS: 2185. They will be free from cracks and flows, and shall have plane rectangular faces with parallel sides and have sharp straight angled edges. They shall have a fine, compact and uniform texture.
- ii) All blocks used in construction shall be dry prior to their being placed in position. The blocks shall be placed on earth other, true plumb and mortar placed so that the mortar does not fall in the cavities. Walls shall be raised not more than 1 mtr. Above another at one time.
- iii) All block work shall be sprayed with clean water for at least seven days after being laid. During this period no cutting or chasing shall be permitted nor shall the block work be disturbed in any way.

- iv) Cement mortar for block work shall be 1:4 (1 cement: 4 coarse sand) by volume. Joints shall be 10 mm thick and on faces of walls to be plastered shall be raked to a depth of 10 mm as the work proceeds.
- v) All junctions between block work and concrete members shall have galvanized mild steel butterfly ties, to be cast in concrete at 400 mm vertical spacing and then built in to the mortar bed joint of the wall. The junction will be raked to a depth of 10 mm and tied with chicken wire mesh to a distance of 150 mm on either side before plastered. Wherever indicated by the Architect a groove will be made in the plaster at the junction without any extra cost.

#### 4.3 Mortar

The mortar for masonry work shall be cement and sharp coarse sand (50% Robo sand is allowed for brick masonry) and shall be made in small quantities so as to be used up within 30 minutes. The cement and sand of the required proportion shall be first mixed dry thoroughly and water added and mixed to a sufficiently thick consistency as required by the Architect. No left over mortar shall be used. Unless otherwise specified the mortar shall be of the following proportions.

- a. One cement and six coarse sand for 230 mm thick masonry work and above.
- b. One cement and four coarse sand for piers, half brick walls, honeycombed brick work, hollow blocks.

### 5.0 PLASTERING

#### 5.0 General

- 5.0.1 All Plaster work shall be of the best workmanship and in strict accordance with the dimensions of the drawings. All Plastering shall be finished to true levels including plumbs, without imperfections, and square with adjoining work. It shall form proper foundations for finishing materials such as paint etc., Masonry and concrete surface to which plaster is to be applied shall be clean, free from efflorescence, sufficiently rough and keyed to ensure proper bond.
- 5.0.2 Wherever directed all joints between R.C.C frames and masonry walls, shall be expressed by a groove in the Plaster. This groove will exactly coincide with the joint beneath. At the corners of all windows and doors or other openings and wherever instructed, 24 gauge expanded galvanized metal mesh strips 200mm wide 450mm long shall be placed diagonally to prevent Plaster cracks.
- 5.0.3 Where grooves are not called for, the joint between concrete and masonry in filling shall be covered by 24 gauge expanded galvanized metal strips, 200mm wide installed before plastering. The Contractor shall supply all necessary labour, material, tools and scaffolding necessary for the completion of the work detailed. He shall be responsible to take proper precautions to all works from damage. Any work rejected through non-compliance with the specifications or damaged work shall be removed and replaced at the expense of the contractor.
- 5.0.4 All chasing, installation of conduits, boxes, etc., shall be completed before any Plastering is commenced on a surface. Chasing or cutting of Plaster will not be permitted. Broken Corners shall be cut back less than 150mm on both sides and patched with plaster of Paris as directed. All corners shall be rounded to a radius. Contractor shall get samples of each type of Plasterwork approved by the Architect.
- 5.0.5 The materials used for Plastering shall be proportioned by volume by means of gauge boxes. Alternatively, it may be required to proportion the materials by weight.

## 5.1 Plaster Work

5.1.1 The joints in the brick work, concrete blocks, shall be raked to a depth of 15mm while the masonry is green. Concrete surfaces to receive plaster shall be suitably roughened. All walls shall be washed with water and kept damp for 10 hours before Plastering.

5.1.2 For sand faced cement Plaster 20 mm thick will be done in two coats .Base coat in 1:4 cement sand mortar in 1:4 & the finishing coat shall be in Cement mortar 1:3, sand used shall be properly graded and washed so as to give a grained texture. Finishing Plaster coat shall be 8mm thick, uniformly applied and surface finished with special rubbing by sponge pads and other tools and recommended by the Architect.

5.1.3 For rough cast Plaster, the backing shall be floated with 3mm thick cement mortar 1:4 with fine sand, spread in small areas not exceeding 2 Sq.mt. at a time. While this coat is still wet, the rough cast containing a mixture of 1 part of Cement, 2 Parts of fine sand and 1 part of gravel, 3 to 6mm size, shall be dashed on the floating coat, to a uniform thickness of 15mm thick and finished even.

5.1.4 Pointing on stone work with cement mortar 1:3 (1 cement : 3 fine sand) Flush/ Ruled pointing

ALL OTHER ITEMS SPECIFICATIONS AS PER LATEST CPWD/ as per BOQ.

### LIST of material to be used in this construction

Sl. No	Description of Material	Approved Brands
1	<b>Cement</b>	53 Grade O.P.C confirming to IS 12269 to be approved by MIDHANI.
2	<b>SAND</b>	Good River sand – Zone III or IV
3	<b>RMC</b>	RMC confirming to IS 4926 to be approved by MIDHANI.
4	<b>Reinforcement</b>	Confirming to Fe 500 / Fe 500D. JSW, Tata, Sail, VSP & JSPL
5	<b>PAINTS AND VARNISH</b>	M/S ASIAN PAINTS/ M/S GOODLAS NEROLAC/ M/S I.C.I. PAINTS/ M/S BERGER (BRITISH) PAINTS/ M/S JENSON NICHOLSON/ NIPPON
6	<b>CEMENT BASED</b>	M/S SNOWCEM INDIA LTD /M/S NITCO PAINTS PVT.

	<b>WATERPROOF PAINTS &amp; RESIN BASED THEMRO PLASTIC PAINTS</b>	<b>LTD. (NITCOCENT) M/S HINDUSTAN COLOUR CHEMICAL INDUSTRIES/ M/S TERRACO (TERRACCIN &amp; TERRACOAT)/ M/S SURFA COAT PVT. LTD</b>
<b>7</b>	<b>TERRAZZO AND CEMENT TILES</b>	<b>M/S NITCO/ M/S NEC/ M/S NIMCO</b>
<b>8</b>	<b>WHITE GLAZED TILES (VITRIFIED CERAMIC)</b>	<b>M/S JOHNSON/ M/S SOMANI PILKINGTON/ M/S SPARTEK/KAJARIA/ROCA</b>
<b>9</b>	<b>POWDER COATED ALUMINIUM DOORS, WINDOWS, WALL SPANS</b>	<b>M/S AJIT INDIA/ M/S ALUMILITE / M/S INDAL/ M/S JINDAL</b>
<b>10</b>	<b>GLASS (PLAIN/FROSTED, GARLESS, BAJRA ETC.)</b>	<b>M/S TRIVENI / M/S MODIGAURD / M/S SAINT GOBAIN /SAFEX</b>

**CHECK LIST OF DOCUMENTS TO BE ENCLOSED BY CONTRACTOR IN TECHNICAL BID for Civil works involved in extension & renovation of Forge shop wash rooms(G.F + F. F)", Midhani"**

SL. NO	DESCRIPTION OF PRE-QUALIFICATION CRITERIA	YES ENCLOSED	NO-NOT ENCLOSED
1.	Bid Security Declaration form		
2.	Latest bank solvency for <b>Rs 8.19 lakhs</b> not older than 06 months from the date of tender. Or The bidder shall have positive net worth in each of three previous financial years.		
3.	Details of ESI & PF registration.		
4.	Details of similar completed Any minor civil works/ maintenance works/civil renovation works . Experience certificate in the last 7 years along with experience certificates. <b>(Estimated Value Rs 20.47 lakhs)</b>		
	A) 3 similar completed Any minor civil works/ maintenance works/civil renovation works <b>each</b> costing not less than the amount equal to 40% of the estimated cost. <b>(Rs 8.19 lakhs)</b>		

Employer

Contractor

	<p><b>OR</b>  B) 2 similar completed Any minor civil works/ maintenance works/civil renovation works <b>each</b> costing not less than the amount equal to 50% of the estimated cost. <b>(Rs 10.24 lakhs)</b> <b>OR</b>  C) one similar completed Any minor civil works/ maintenance works/civil renovation works <b>each</b> costing not less than the amount equal to 80% of the estimated cost. <b>(Rs 16.38 lakhs)</b></p> <p>PS: -  Experience in renovation of Wash rooms is preferable but not compulsory.  Note :1) Experience certificates shall be duly self attested.  2) In case of experience in reputed/ private firm, the same shall be supported with 26AS statement of IT of the relevant period.  3) Copy of work order, BOQ, completion certificate indicating value and date of completion shall be submitted.  4) Proof of relevant experience having successfully completed similar nature of work as a whole (The work shall be completed as a whole. Partial value/partial completion shall not be considered.  5) All bidders are requested to read the clauses of Eligibility criteria on pg:4 &amp;5 before enclosing the documents against this check list.</p>		
5.	Certificate of Incorporation issued by Registrar of Companies (OR) Certificate of registration by registrar of Firms (OR) GST certificate in case of Proprietary firms (For prior to July'2017 period, related Tax registration e.g VAT etc).		
6.	PAN number/ GIR number issued by I.T authority		
7.	GST number		
8.	Average Annual Turnover during the last 3 years should be at least <b>Rs 6.14 lakhs</b>		
9.	RTGS details (Bank details for e-payment)		
10	Unconditional acceptance of all Technical, commercial terms and conditions along with corrigendums if any.		

Declaration by contractor

1. I have seen the site and understood the full scope of work viz Specifications, drawings etc.

Employer

Contractor

2. I have noted the changes (if any) as per pre-bid meeting and understood the scope of work and I agree to enclose pre-bid meeting minutes along with technical bid, failing which MIDHANI is empowered to reject or consider as per decision of MIDHANI Management. I shall not claim any extra due to self misunderstanding of drawings, specifications etc, what so ever.
3. I agree to return all the documents along with this offer.
4. Any information provided in the bid if found to be false, MIDHANI is empowered to take action against me as per the MIDHANI rules in VOGUE.

CONTRACTOR  
SIGNATURE AND SEAL

**Note:-**The tender application and related documents will be assessed to demonstrate convincingly that the applicant possesses the required experience, together with the technical, administrative, and financial capability to perform the Contract and has good performance record in the relevant area. Applicants will not be considered if they have a poor performance record such as: abandoning of works; not properly completing /defaulting contracts, inordinate delays in completing contracts; litigation history, financial failure, etc. MIDHANI reserves the right to approach its previous clients for the purpose of this Contract.

**Note to Suppliers regarding Invoice and related payment conditions:**

1. The GST invoice to be submitted by supplier shall be in accordance with provisions of Sec 31 of CGST Act, 2017 and shall contain all particulars specified in rule 46 of CGST Rules including HSN/SAC codes.
2. Wherever E-invoice is applicable as per provisions of GST Act and notifications issued from time to time, bills will be processed only on submission of E-invoice (in addition to all other relevant documents). If E-invoice is not applicable, supplier is requested to submit the declaration on letter head signed by Authorized signatory in the attached format at Annexure-A.
3. Further to above, if the aggregate turnover of the supplier exceeds threshold limits as notified by Government of India at any future date, then E-invoice shall be applicable and the bidder has to comply with required provisions of GST Law.
4. Supplier need to give declaration whether he is filing GSTR-1 and GSTR-3B on monthly basis or quarterly basis. If supplier is filing /opted for GSTR-1 and GSTR-3B on Quarterly basis, supplier is requested to submit the declaration on letter head signed by Authorized signatory in the attached format at Annexure-B.
5. If the supplier is filing returns on monthly basis, payment will be made only after filing of GSTR-1 and GSTR-3B of the respective month including availability of invoice in GSTR-



2B(It is to be noted that the Invoice will appear in GSTR-2B of corresponding month if the supplier files GSTR-1 within due dates mentioned in the Act).

6. If supplier is filing / opted for GSTR-1 and GSTR-3B on Quarterly basis, only the base amounts will be paid initially and release of GST amounts will be made only after quarterly filing of GSTR-1, GSTR-3B of corresponding months including availability of invoice in GSTR-2B (It is to be noted that the Invoice will appear in GSTR-2B of corresponding month if the supplier files GSTR-1 within due dates mentioned in the Act). After filing of GSTR-1 and GSTR-3B Supplier has to intimate the same to Purchase Department along with copies of GSTR-1 and GSTR-3B for onward intimation to Finance Department.
7. In case MIDHANI is unable to avail GST credit within time limit specified under the GST Act due to delay in filing and /or intimation regarding filing of GST returns by supplier or due to any other fault of supplier, corresponding GST amounts will not be paid to supplier.

### **Annexure-A**

#### **TO BE PRINTED ON LETTER HEAD**

**To whomsoever, it may concern.**

We M/s. .... having PAN ..... and GSTIN Registration Number ..... hereby undertake that our Aggregate Turnover (as per Section 2(6) of Central Goods and Services Tax Act, 2017) for the previous financial year does not exceed the prescribed threshold (as on the date of this declaration) for generation a Unique Invoice Registration Number (IRN) and QR code as per the provisions of Central Goods and Services Tax Act, 2017 and rules thereunder ("GST Law").

Further, we also undertake that if the aggregate turnover of M/s. .... exceeds the current threshold or revised threshold notified by Government of India at any future date, then we shall issue invoice, Debit Note and credit note in compliance with the required provisions of GST Law (E-Invoice).

I/We .....acting on behalf of (Company name) ..... in the capacity of (designation) ..... and keep it indemnified against any losses, damages (or) costs which it suffers (or) incurs due to breach on our part of this declaration.

**LEGAL NAME** :  
**TRADE NAME** :  
**TAX PAYER TYPE** :Regular

Thanking you. Yours Truly,

For M/s.....

Authorized Signatory Name:  
Designation:  
Stamp:

**Annexure-B**

**TO BE PRINTED ON LETTER HEAD**

**To whomsoever, it may concern.**

We M/s. .... having PAN ..... and GSTIN Registration Number hereby confirm that our Aggregate Turnover (as per Section 2(6) of Central Goods and Services Tax Act, 2017) was not more than prescribed limit for Quarterly filing and we are anticipating that turnover for the Current Financial year also will be within the prescribed limit. Hence, we opt to file GSTR-1 and GSTR-3B returns on a Quarterly basis for the Financial year 2020-2021(January 2021 onwards). We are hereby agreeing to file GSTR-1 and GSTR-3B on or before due dates as per provisions of GST Act and Rules thereunder. In case we revise option / required to file GSTR-1 and GSTR-3B on monthly basis, same will be intimated immediately and complied with.

Further, we also undertake that if the aggregate turnover of M/s. ....

Employer

Contractor

exceeds the current threshold or revised threshold notified by Government of India at any future date, then we shall file returns compliance with the provisions of GST Act or rules made thereunder.

I/We .....acting on behalf of (Company name) ..... in the capacity of (designation)..... and keep it indemnified against any losses, damages (or) costs which it suffers (or) incurs due to beach on our part of this declaration.

**LEGAL NAME :**

**TRADE NAME :**

**Thanking you.**

Yours Truly,  
For M/s.....

(Authorized Signatory)

Name:  
Designation:  
Stamp:



**MISHRA DHATU NIGAM LIMITED  
P.O.KANCHANBAGH, HYDERABAD**

**Part-II (PRICE BID)  
(REVERSE AUCTION)**

**Civil works involved in extension & renovation of Forge  
shop wash rooms(G.F + F.F)", MIDHANI**

**PURCHASE DEPARTMENT****Tender Notice No:** MDN/PUR/AP20241007/EADVT/115/24-25**Date:** 25-05-2024

To,

Dear Sir,

**Sub: "Civil works involved in extension & renovation of Forge shop wash rooms(G.F + F. F)",  
Midhani-Reg**

1. Please find enclosed herewith the Tender Enquiry for the above work you are requested to furnish your offer through online <http://eprocmidhani.nic.in> before last date of submission; Please confirm whether you are MSME Unit or MSME Unit owned by SC/ST Entrepreneur. If yes, please submit latest valid documentary proof for extending benefits as per government guidelines. **Estimated value of work is Rs 20.47 Lakhs**
2. Tender shall be submitted on or before **24-06-2024** up to 10.30 hrs.
3. The period of completion of job will be **90 days (Staggered)** from the date of handing over of site.
4. The tenderer shall inspect the site of work and understand the scope of work before quoting. No extra amount will be paid on account of misunderstanding either in scope of work, specification, drawings, site conditions etc.
5. All materials required for the work shall be arranged by the contractor unless until specified in Bill of Quantities.
6. The work shall be carried out as per latest CPWD specifications.
7. This is an item rate contract and the quantities are approximate, but payment will be made only on actual work done based on joint measurement.
8. **a.Three R.A Bills and one Final Bill will be paid. The contractor has to furnish all material gate entries along with each bill (if any).**
  - b. R.A Bill will be paid within 15 days from the date of certification of Engineer-in-charge. However, Final bill will be made within 30 days after satisfactory completion of work and certification by Engineer-in-charge.
9. **a) Security Deposit (S.D):** The successful tenderer has to deposit 5% of contract value as Security Deposit within 21 days from the receipt of order, interest @12% p.a shall be levied for the period of delay beyond 21 days. This 5% Security Deposit can be submitted online through bank or can deposit Bank Guarantee from any nationalized bank. The validity of B.G shall be equivalent to contract period plus three months extra. The 5% Security Deposit will be released after completion of work, Site clearance and cleaning by the contractor duly certified by Engineer- In- Charge.

Bank Account Details:

Current Account Name : Mishra Dhatu Nigam Limited

Bank Name : HDFC Bank Limited

Branch Name : Lakdikapul

IFSC Code : HDFC0000021

Account Number : 00210330000440

- b. A sum of 5% of gross value of work order will be deducted from each running bill and final bill. The same will be released after the completion of defect liability period of 6 months and after certification of Engineer –In- Charge. Also, contractor can submit Bank Guarantee for

equivalent amount at the time of final bill in the prescribed format issued by nationalized or scheduled bank and same shall be valid for defect liability period + 3 months claim period.

10. The security and safety rules of MIDHANI to be followed. The contractor shall take care of all labour laws regarding minimum wages, ESI, PF etc., Midhani is no way responsible in this respect. Midhani is not liable for any claim in respect of any accidents during the work.
11. (a) MIDHANI reserves the right to operate partial or delete any item specified in BOQ without any compensation to contractor for the items un-operated or deleted.  
(b) If at any time after acceptance of the tender MIDHANI feels that for any reasons whatsoever, if the whole or any part of the contract services is not required to be carried out, notice shall be given in writing of the fact to the contractor and upon receipt of such notice, the contractor shall stop the execution of such services as indicated in the notice forthwith. The contractor shall have no claim to any payment of compensation or otherwise whatsoever on account of any profit or advantage which he might have derived from the execution of the services in full, but which he did not derive in consequence of the foreclosing of the services / contract. Contractor shall be paid at contract rates for the full amount of the work executed including such additional services as may be rendered necessary by said foreclosing.
12. Any new items (viz. supply of material, labour, skilled works etc) will be paid as per (a) or (b) whichever is less:
  - a) As per CPWD 2023 rates with applicable Percentage Index at that time.
  - b) As per market rate analysis.
13. The contractor should not cause any loss or damage to MIDHANI property/or personnel, if any loss or damage is caused the cost of the same will be recovered from the bills by MIDHANI, which will be final.
14. The quantities are subjected to  $\pm 20\%$  variation and the contractor has to carry the work on the same rates, terms and conditions within the variation limits prescribed.
15. If the contractor fails to receive the work order within a week time from the date of intimation to him or if the contractor does not start the work within 3-7 days from the date of handover of site, or if the work is abandoned / stopped without bringing proper notice to Engineer-in-charge, the contract will be terminated and balance work will be carried out at the cost and risk of contractor.
16. Liquidated Damages:
  - a) If the work is not completed within stipulated time, liquidated damages at 1% per week delay or part there of up to maximum of 10% total value of work will be deducted.
  - b) If the delays are not solely attributed to the contractor, the competent authority holds the right to waive off the L.D or reduce the L.D as the case may be.
17. MIDHANI reserves the right to penalize
  - a) If the contractor fails to submit the 5% Security deposit within the stipulated period, then penalty as per clause 10 (a) will be collected and further delay will empower MIDHANI to termination of contract and apply risk purchase.
  - b) If the contractor fails to receive the work order within 3 days of intimation, then a penalty Rs 500 per day will be levied subjected to maximum of Rs 5000.00. Further delay will empower MIDHANI to termination of contract and apply risk purchase.
  - c) Contractor has to maintain "HINDRANCE REGISTER" which is to be certified by both MIDHANI Site engineer and contractor engineer before release of final bill.
18. The offer shall be valid for 90 days from the date of opening of tender.

19. Incomplete or partially filled tenders will be rejected. Also, conditional offers are liable for rejection. MIDHANI reserves the right to accept or reject any or all tenders without assigning any reasons.
20. Contractor has to maintain site record, hindrance record, record for steel, cement etc.
21. Site has to be cleaned by the contractor before handing over to MIDHANI after completing the work. The final bill will be processed only after obtaining site cleaning certificate from the Engineer-in-charge.
22. **If the contractor performs any work in a manner contrary to the Contract, without the approval of the Engineer-In-Charge, the Contractor shall bear all the costs arising therefrom and shall be responsible for all losses to the employer arising therefrom.**
23. The bid security declaration form will come in force if the tenderer withdraws his tender proposals /modifies / changes / alters / impairs / derogates the tender document on his own after the first cover is opened or within the subsistence of the validity period of offer or fails to accept the Letter of Award (LOA) issued by MIDHANI or fails to submit security deposit or fails to turn-up and execute contract agreement or fails to commence the work as per LOA. Such bidders will be banned subject to action as may be deemed fit. In case of unilateral revision or withdrawal of offer by the bidder as above, shall also result in rejection of bid without notice. If there is any authentic information about the intending tenderer having formed a cartel / submitted Non-earnest bids, the tender will be cancelled and the bid security declaration form of all the tenderer shall come in force, besides initiating actions like banning as may be deemed fit.
24. Note to Suppliers regarding Invoice and related payment conditions:
  1. The GST invoice to be submitted by supplier shall be in accordance with provisions of Sec 31 of CGST Act, 2017 and shall contain all particulars specified in rule 46 of CGST Rules including HSN/SAC codes.
  2. Wherever E-invoice is applicable as per provisions of GST Act and notifications issued from time to time, bills will be processed only on submission of E-invoice (in addition to all other relevant documents). If E-invoice is not applicable, supplier is requested to submit the declaration on letter head signed by Authorized signatory in the attached format at Annexure-A.
  3. Further to above, if the aggregate turnover of the supplier exceeds threshold limits as notified by Government of India at any future date, then E-invoice shall be applicable and the bidder has to comply with required provisions of GST Law.
  4. Supplier need to give declaration whether he is filing GSTR-1 and GSTR-3B on monthly basis or quarterly basis. If supplier is filing /opted for GSTR-1 and GSTR-3B on Quarterly basis, supplier is requested to submit the declaration on letter head signed by Authorized signatory in the attached format at Annexure-B.
  5. If the supplier is filing returns on monthly basis, payment will be made only after filing of GSTR-1 and GSTR-3B of the respective month including availability of invoice in GSTR-2B (It is to be noted that the Invoice will appear in GSTR-2B of corresponding month if the supplier files GSTR-1 within due dates mentioned in the Act).
  6. If supplier is filing / opted for GSTR-1 and GSTR-3B on Quarterly basis, only the base amounts will be paid initially and release of GST amounts will be made only after quarterly filing of GSTR-1, GSTR-3B of corresponding months including availability of invoice in GSTR-2B (It is to be noted that the Invoice will appear in GSTR-2B of corresponding month if the supplier files GSTR-1 within due dates mentioned in the Act). After filing of GSTR-1

and GSTR-3B Supplier has to intimate the same to Purchase Department along with copies of GSTR-1 and GSTR-3B for onward intimation to Finance Department.

7. In case MIDHANI is unable to avail GST credit within time limit specified under the GST Act due to delay in filing and /or intimation regarding filing of GST returns by supplier or due to any other fault of supplier, corresponding GST amounts will not be paid to supplier.

**25. Contractor has to quote price viz price + taxes + GST + Cess. The accuracy shall be up to two decimals.**

Yours faithfully,  
For Mishra Dhatu Nigam Limited

**Subhadip Ghosh**  
**Addl. General Manager (I/c Purchase)**

**DECLARATIONS: -**

- 1) I have seen the site and understood the full scope of work, specified in tender, BOQ, drawings etc. The drawings enclosed with this tender are only tentative. The actual dimensions/details shall be provided before construction.
- 2) I agree to return all the documents along with this offer.
- 3) I have taken into account of points circulated in Minutes of Pre bid Meeting circulated on MIDHANI website, if posted.

SIGNATURE AND SEAL



**Annexure-A  
TO BE PRINTED ON LETTER HEAD**

**To whomsoever, it may concern.**

We M/s. .... having PAN ..... and GSTIN Registration Number ..... hereby undertake that our Aggregate Turnover (as per Section 2(6) of Central Goods and Services Tax Act, 2017) for the previous financial year does not exceed the prescribed threshold (as on the date of this declaration) for generation a Unique Invoice Registration Number (IRN) and QR code as per the provisions of Central Goods and Services Tax Act, 2017 and rules thereunder (“GST Law”).

Further, we also undertake that if the aggregate turnover of M/s. .... exceeds the current threshold or revised threshold notified by Government of India at any future date, then we shall issue invoice, Debit Note and credit note in compliance with the required provisions of GST Law (EInvoice).

I/We .....acting on behalf of (Company name) ..... in the capacity of (designation) ..... and keep it indemnified against any losses, damages (or) costs which it suffers (or) incurs due to beach on our part of this declaration.

**LEGAL NAME :**  
**TRADE NAME :**  
**TAX PAYER TYPE :Regular**

Thanking you. Yours Truly,

For M/s.....

Authorized Signatory Name:  
Designation:  
Stamp:

**Annexure-B**

**TO BE PRINTED ON LETTER HEAD**

**To whomsoever, it may concern.**

We M/s. .... having PAN ..... and GSTIN Registration Number hereby confirm that our Aggregate Turnover (as per Section 2(6) of Central Goods and Services Tax Act, 2017) was not more than prescribed limit for Quarterly filing and we are anticipating that turnover for the Current Financial year also will be within the prescribed limit. Hence, we opt to file GSTR-1 and GSTR-3B returns on a Quarterly basis for the Financial year 2020-2021(January 2021 onwards). We are hereby agreeing to file GSTR-1 and GSTR-3B on or before due dates as per provisions of GST Act and Rules thereunder. In case we revise option / required to file GSTR-1 and GSTR-3B on monthly basis, same will be intimated immediately and complied with.

Further, we also undertake that if the aggregate turnover of M/s. .... exceeds the current threshold or revised threshold notified by Government of India at any future date, then we shall file returns compliance with the provisions of GST Act or rules made thereunder.

I/We .....acting on behalf of (Company name) ..... in the capacity of (designation)..... and keep it indemnified against any losses, damages (or) costs which it suffers (or) incurs due to beach on our part of this declaration.

LEGAL NAME :

TRADE NAME :

Thanking you.

Yours Truly,

For M/s.....

(Authorized Signatory)

Name:

Designation:

Stamp:

**P.S:**

1. The tenderer shall attend **Pre-bid meeting** on 05-06-2024 at 11.00 am through Video Conference. The link for video conference shall be intimated one day prior to pre-bid meeting date. Interested parties may request for weblink for video conference at least two days in advance to date of meeting through email. Also parties can discuss on telephone and raise query by mails before pre bid meeting and at least one week before submission of bids

**2. For Technical clarifications, pl Contact:**

- Sri D.Harshavardhan, Sr. Manager(Civil)  
Mobile No: 9963974074

Mail ID:- [dhvardhan@midhani-india.in](mailto:dhvardhan@midhani-india.in)

- Mrs. P.Sindusha, Manager(Civil)  
Mobile no: 9154951893

[Email : Sindusha.p@midhani-india.in](mailto:Sindusha.p@midhani-india.in)

3. For commercial clarifications, pl contact:

- Sri K.Mukesh, Sr Manager (Purchase)

Mail ID: [kmukesh@midhani-india.in](mailto:kmukesh@midhani-india.in), Landline: 040-24184348,

4. The Bidder is requested to submit their questions / queries / clarifications in writing by email / fax/ post to reach MIDHANI not later than one week before the meeting.

<b>BOQ for Extension &amp; Renovation of Washroom (First Floor + Ground Floor) at Forge Shop</b>					
<b>S. No</b>	<b>Description of work</b>	<b>Unit</b>	<b>Qty</b>	<b>Rate</b>	<b>Amount</b>
1	Dismantling doors, windows and clerestory windows (steel or wood) shutter including chowkhats, architrave, holdfasts etc. complete and stacking within 50 metres lead of area 3 sq. metres and below	Each	13.00		
2	Demolishing brick work (In Cement Mortar) manually by mechanical means including stacking of serviceable material and disposal of unserviceable material within 50 metres lead as per direction of EIC	cum	10.00		
3	Demolishing R.C.C. work manually/ by mechanical means including stacking of steel bars and disposal of unserviceable material within 50 metres lead as per direction of Engineer - in- charge.	cum	2.00		
4	Dismantling tile work in floors and roofs laid in cement mortar including stacking material within 50 metres lead, For thickness of tiles 10 mm to 25 mm	Sq.m	221.00		
5	Providing and laying Vitrified tiles in floor of Make : KAJARIA/AGL/Make approved by EIC (thickness to be specified by the manufacturer) with water absorption less than 0.08% and conforming to IS:15622, of approved brand & manufacturer, in all colours and shade, laid on 20 mm thick cement mortar 1:4 (1 cement: 4 coarse sand) jointing with grey cement slurry @3.3 kg/sqm including grouting the joints with white cement and matching pigments etc. The tiles must be cut with the zero chipping diamond cutter only . Laying of tiles will be done with the notch trowel, plier, wedge, clips of required thickness, leveling system and rubber mallet for placing the	Sq.m	79.00		

	tiles gently and easily. Glazed Vitrified tiles Matt/Antiskid finish of <b>(size of Tile 600 x 600 mm)</b>				
6	Providing and fixing 1st quality ceramic glazed wall tiles conforming to IS: 15622 (thickness to be specified by the manufacturer), of Make : KAJARIA/AGL/Make approved by EIC, in all colours, shades except burgundy, bottle green, black of any size as approved by Engineer-in-Charge, in skirting, risers of steps and dados, over 12 mm thick bed of cement mortar 1:3 (1 cement : 3 coarse sand) and jointing with grey cement slurry @ 3.3kg per sqm, including pointing in white cement mixed with pigment of matching shade complete. <b>(Size of tile is 600 X 1200 mm)</b>	Sq.m	307.00		
7	Providing and laying Polished Granite stone flooring in required design and patterns, in linear as well as curvilinear portions of the building all complete as per the architectural drawings with 18 mm thick stone slab over 20 mm (average) thick base of cement mortar 1:4 (1 cement : 4 coarse sand) laid and jointed with cement slurry and pointing with white cement slurry admixed with pigment of matching shade including rubbing, curing and polishing etc. all complete as specified and as directed by the Engineer-in-Charge. Polished Granite stone slab colour of Black, Cherry/Ruby Red or equivalent.	Sq.m	3.50		
8	Providing & Laying Brick work with common burnt clay FPS bricks of class designation 7.5 in exposed brick including making grooves horizontal & vertical 10mm wide 12mm deep complete in superstructure above plinth level upto floor V level in Cement mortar 1:6 (1 cement : 6 coarse sand)	cum	21.00		

9	Providing & Laying Half brick masonry with common burnt clay F.P.S. bricks of class designation 7.5 in superstructure above plinth level up to floor V level. Cement mortar 1:4 (1 cement :4 coarse sand)	Sq.m	93.00		
10	Providing and laying 18 mm cement plaster in two coats under layer 12 mm thick cement plaster 1:5 (1 cement : 5 coarse sand) finished with a top layer 6 mm thick cement plaster 1:6 (1 cement : 6 fine sand).	Sq.m	466.00		
11	Providing & Plastering 6 mm cement plaster of mix for the slab:- 1:3 (1 cement : 3 fine sand)	Sq.m	51.00		
12	Providing & Distempering with oil bound washable distemper of approved brand and manufacture to give an even shade: New work (two or more coats) over and including water thinnable priming coat with cement primer	Sq.m	203.00		
13	Providing & Finishing walls with Acrylic Smooth exterior paint of required shade : New work (Two or more coat applied @ 1.67 ltr/10 sqm over and including priming coat of exterior primer applied @ 2.20 kg/10 sqm	Sq.m	150.00		
14	Providing and fixing factory made single extruded WPC (Wood Polymer Composite) solid door/window/Ceometry windows & other Frames/Chowkhat of Size: 65x100 mm comprising of virgin PVC polymer of K value 58-60 (Suspension Grade), calcium carbonate and natural fibers (wood powder/ rice husk/wheat husk) and non toxic additives (maximum toxicity index of 12 for 100 gms) fabricated with miter joints after applying PVC solvent cement and screwed with full body threaded star headed SS screws having minimum frame density of 750 kg/cum, screw withdrawal strength of 2200 N (Face)	RM	82.00		

	& 1100 N (Edge), minimum compressive strength of 58 N/mm <sup>2</sup> , modulus of elasticity 900 N/mm <sup>2</sup> and resistance to spread of flame of Class A category with property of being termite/borer proof, water/moisture proof and fire retardant and fixed in position with M.S hold fast/lugs/SS dash fasteners of required dia and length complete as per direction of Engineer-In- Charge.				
15	Providing and fixing factory made single extruded WPC (Wood Polymer Composite) solid plain flush door shutter of required size comprising of virgin polymer of K value 58-60 (Suspension Grade), calcium carbonate and natural fibers (wood powder/ rice husk/wheat husk) and non toxic additives (maximum toxicity index of 12 for 100 gms) having minimum density of 650 kg/cum and screw withdrawal strength of 1800 N (Face) & 900 N (Edge), minimum compressive strength 50 N/mm <sup>2</sup> , modulus of elasticity 850 N/mm <sup>2</sup> and resistance to spread of flame of Class A category with property of being termite/ borer proof, water/moisture proof and fire retardant and fixing with stainless steel butt hinges of required size with necessary full body threaded star headed counter sunk S.S screws, all as per direction of Engineer-In- Charge. 35 mm thick WPC Door Shutter	Sq.m	29.00		
16	Earth work in excavation of all kinds of soil by mechanical means (Hydraulic excavator)/ manual means over areas (exceeding 30 cm in depth, 1.5 m in width as well as 10 sqm on plan) including getting out and disposal of excavated earth lead upto 50 m and for lift upto 1.5m, as directed by Engineer-incharge.	cum	12		

17	Providing and laying in position cement concrete of specified grade, work up to plinth level : PCC 1:4:8 (1 cement, 4 coarse Sand(Zone-III) derived from natural sources: 8 graded stone aggregate 40mm nominal size derived from natural sources) including curing levelling, etc., as directed by EIC	cum	1		
18	Providing and laying in position cement concrete of specified grade, work up to plinth level : PCC 1:2:4 (1 cement, 2 coarse Sand(Zone-III) derived from natural sources: 4 graded stone aggregate 20mm nominal size derived from natural sources) including curing levelling, etc., as directed by EIC	cum	3.00		
19	Providing and laying Concrete of M25 grade (with minimum cement content of 330 kg /cum) in position ready mixed or site batched design mix cement concrete for reinforced cement concrete work; using coarse aggregate and fine aggregate derived from natural sources, OPC, admixtures in recommended proportions as per IS: 9103 to accelerate / retard setting of concrete, to improve durability and workability without impairing strength; including pumping of concrete to site of laying, curing, carriage for all leads; but excluding the cost of centering, shuttering, finishing and reinforcement etc complete as directed by EIC	cum	18		
20	Providing & Fixing Steel reinforcement for R.C.C. work including straightening, cutting, bending, placing in position and binding all complete upto & above plinth level for Thermo-Mechanically Treated bars of grade Fe-500D or more	Kg	1289		
21	Providing Centering and shuttering including strutting, propping etc for Foundations, footings, bases for columns. The cost also includes removal of form work on completion.	Sq.m	5		
22	Providing Centering and shuttering including strutting, propping etc for columns, Pillars, Piers,	Sq.m	27		



	Abutments, Posts and struts. The cost also includes removal of form work on completion.				
23	Providing Centering and shuttering including strutting, propping etc for Lintels, beams, plinth beams, girders, bressumers and cantilevers. The cost also includes removal of form work on completion.	Sq.m	26		
24	Providing Centering and shuttering including strutting, propping etc for Suspended floors, roofs, landings, balconies and access platforms. The cost also includes removal of form work on completion.	Sq.m	57		
25	Supply and fixing in position powder coated aluminum fully glazed windows of approved colour using Aluminum 3 track box section frame with top and verticle sides and for frame bottom using sliding shutters made out of aluminum sections, inside the h-section for top and bottom and plain section for ends including making window weathering seal proof and mounted in fibre wheels 2 nos for each shutter and fixed 5 mm thick plain float glass 1st quality with necessary PVC rubber beeding alround including providing 2 nos maruti lock cleat for window with 7.5mm thick aluminum grill and mesh as approved by the department @ 3.58/kg/m2 including cost and conveyance of all materials, labour charges for making, erecting in position etc., . gaps between wall and Al frame shall be closed with white cement, where ever required complete.	Sq.m	5.00		
26	Disposal of lime, moorum, building rubbish from the site including conveyance of materials up to an average lead of 1KM away from the site, and correspondiong required lift, loading, unloading etc complete as directed by the EIC. (The	cum	10.00		

	quantity is net quantity of capacity of truck after deduction of 20% for looseness) By mechanical transport including loading, unloading and stacking. (Lead upto 1KM away from the site)				
27	Disposal of excavated excess earth from the site including conveyance of materials up to an average lead of 1KM away from the site, and corresponding required lift, loading, unloading etc complete as directed by the EIC. (The quantity is net quantity of capacity of truck after deduction of 20% for looseness) By mechanical transport including loading, unloading and stacking. (Lead upto 1KM away from the site)	cum	18		
28	Supplying and applying bituminous solution primer on roof and / or wall surface at 0.24 litre per sqm. Providing and laying four courses water proofing treatment with bitumen felt over roofs consisting of first and third courses of blown bitumen 85/25 or 90/15 conforming to IS : 702 applied hot @ 1.45 Kg per square metre of area for each course, second course of roofing felt type 3 grade-I (hessian based self finished bitumen felt) and fourth and final course of stone grit 6 mm and down size or pea sized gravel spread at 6 cubic decimeter per square metre, including preparation of surface but excluding grading complete with: Bitumen felt 3mm thick (hessian base) type 3 grade I conforming to IS : 1322. <b>A Guarantee of 5 years from the date of Defect Liability period to be given by the contractor on Rs. 100/- stamp paper.</b>	Sq.m	54.00		
29	Providing & Fixing Structural steel work in single section, fixed with or without connecting plate, including cutting, hoisting, fixing in position and applying a priming coat of approved steel primer	Kg	204		

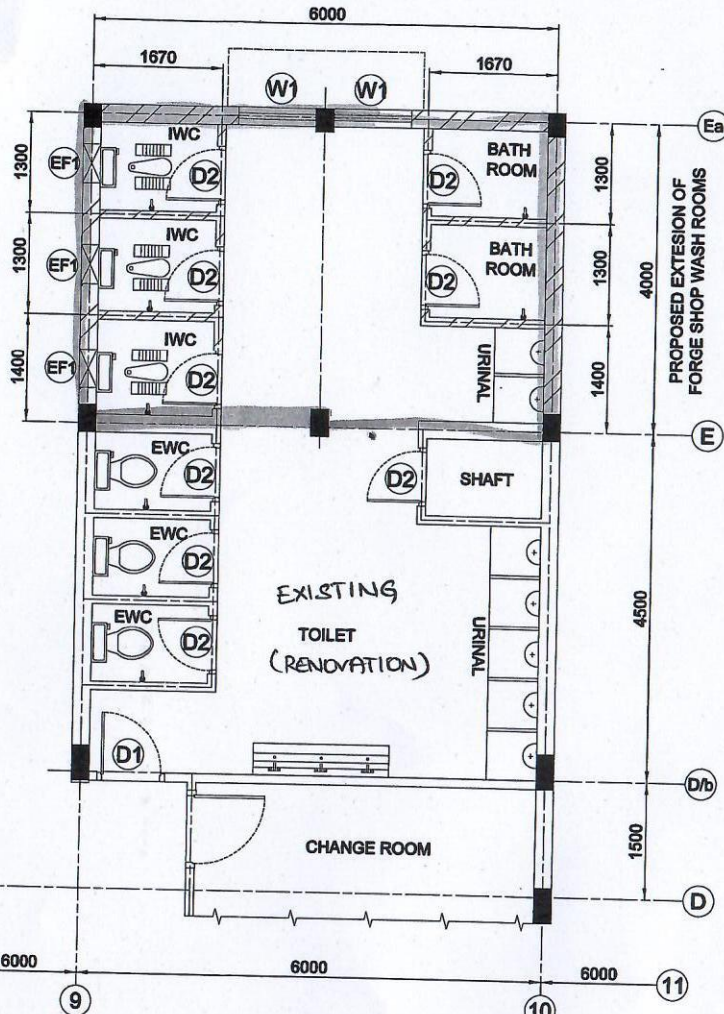
	all complete				
30	Providing & doing Neat Cement Punning etc complete.	Sq.m	54		
31	Supply and fixing of aluminium powder coated ventilator of size of 36"X 18" windows including providing of 4 mm thick glass panes, provision of exhaust fan complete & mosquito mesh.	Each	8.00		
	<b>Providing &amp; Fixing of Sanitary Fittings</b>				
32	Providing & fixing European water closet star white of <b>Hindware make: Universal P standard closet, cat No: 20012 or equivalent make</b> as approved by EIC. The cost includes cover, angle cock of approved by EIC, heavy duty PVC connection inlet pipe etc., closing the joints with white/ coloured cement wherever necessary as per the installation guide given in approved sanitary limited.	Each	<b>5</b>		
33	Providing and fixing Water Closet squatting pan ( <b>Cera make: Orrisa Pan (BR) , Cat no: S3020105</b> ) or equivalent make as approved by EIC (Indian type W.C. pan) with 100mm P or S trap, Single Flush low level white P.V.C. flushing cistern (Sleek Fresh(ISI)) with manually controlled device (handle lever) conforming to IS : 7231, also including 15mm inlet connection with brass unions at ends including one 15mm angle valve with all fittings and fixtures complete including cutting and making good the walls and floors wherever required. including P trap of indian W.C shall be encased on CC (1:2:4) 6" around well above the joints to stop leakage at the joint etc, complete including cost of automatic PVC flush tank 5 litre capacity with flush pipe, ball cock, Angle cock, inlet & outlet arrangement and conveyance of all materials to site, cost of CC bed, labour charges and, charges etc., complete	Each	<b>4</b>		

	for finished item of work.				
34	Providing & fixing star white Wash basin with half pedestal of <b>Cera make: Cackle, Cat No: S2040163H)</b> fixing to the wall. The cost includes supply and fixing of heavy duty PVC flexible connection inlet pipe upto 1.50 mtrs long. Also PVC flexible outlet pipe (heavy duty) , two no's angle cocks approved by EIC, waste coupling 32mm, waste pipe, rag bolt / brackets and making good in walls where ever required.	Each	3		
35a	Providing and fixing white vitreous china urinal basin of <b>Cera make: Civic, Cat No: 54020113 or equivalent make</b> as approved by EIC with CP brass fittings such as speader with unions and clamps including 25mm CP concealed flush valve with isolation valve, CP brass flush bend also dome shaped waste coupling, union, nut 50mm dia PVC waste pipe clamped in walls with suitable trap leading up to the P Trap etc. including cutting and making good walls, including cost and conveyance of all materials to site,labour charges etc., complete for finished item work.	Each	7		
35b	Providing and fixing white vitreous china urinal basin of <b>Hindware make: Dyna, Cat No: 60010 or equivalent make</b> as approved by EIC with CP brass fittings such as speader with unions and clamps including 25mm CP concealed flush valve with isolation valve, CP brass flush bend also dome shaped waste coupling, union, nut 50mm dia PVC waste pipe clamped in walls with suitable trap leading up to the P Trap etc. including cutting and making good walls, including cost and conveyance of all materials to site,labour charges etc., complete for finished item work.	Each	3		

36	Providing & fixing of 12mm thick toughened glass urinal partition size (3'X2') fixing to the wall including brackets support complete etc.	Each	<b>9</b>		
37	Providing & fixing angle cock 20mm nominal bore dia.	Each	<b>3</b>		
38	Providing & fixing of Flush cock 25mm-Push type spring loaded of <b>Hindware make, Cat No: F850020CP</b> complete.	Each	<b>10</b>		
39	Providing and fixing of Paper holder of vitreous china fixed to walls with chromium plated (CP) brass screws complete.	Each	<b>5</b>		
40	Providing & fixing of Long body tap of 20mm nominal bore dia as complete.	Each	<b>10</b>		
41	Providing and fixing of Health Faucet & Bib cock 2 in 1 tap 20mm nominal bore with plunge complete and all connected accesories.	Each	<b>5</b>		
42	Providing & fixing of Pillar cock of 20mm nominal bore dia, <b>make: CERA, Model : F1016101 (chelsea)</b>	Each	<b>3</b>		
43	Providing & fixing of shower along with shower extension rod with complete fittings.	Each	<b>2</b>		
44	Providing and fixing of 600mm long Towel rod of CP brass frame with accessories complete.	Each	<b>2</b>		
45	Providing & fixing of Towel ring rod of CP brass frame with accessories complete.	Each	<b>7</b>		
46	Providing and fixing of soap dispenser of good quality complete.	Each	<b>7</b>		
47	Providing and fixing of CP brass soap dish tray of good quality of normal make complete.	Each	<b>9</b>		
48	Providing & fixing of C.P brass jalli of approved make.	Each	<b>13</b>		
49	Providing & fixing of C.P brass hole jalli of approved make.	Each	<b>13</b>		
50	Providing and fixing Concealed stop cock with adjustable wall flange (20mm) with all connected fittings complete.	Each	<b>2</b>		

51	Providing & fixing of 1" PVC connections	Each	<b>8</b>		
52	Supply and fixing of CPVC 25 mm dia pipe with complete connection fittings.	RM	<b>150</b>		
53	Supply & fixing PVC out let pipe 110 mm dia pipe including all connected fittings like vent cap and clamping etc., complete	RM	<b>145</b>		
54	Providing and fixing of 1" Ball valve with all connected fittings complete	Each	<b>2</b>		
55	Providing & fixing of short body tap of 20mm nominal bore dia as complete.	Each	<b>4</b>		
56	Providing and fixing bevelled edge mirror of size 600 mm X 450 mm of superior glass (of approved quality) complete with 6 mm thick with C.P. brass studs button type & conveyance of all materials to site and all operational ,incidental labour charges etc, complete for finished item of work complete.	Each	<b>7</b>		
57	Providing and fixing of plastic water tank (Sintex) 1000 Liters including float valve, tank nipple connections etc., complete.	Each	<b>2</b>		
58	Providing and fixing of PVC floor nahani traps including jointing with cement solvent complete in 75mm .	Each	<b>16</b>		
59	Providing & fixing of SS floor drainer of size 40" X 4" with ss trap and side hole with collar complete.	Each	<b>2</b>		
60	Constructing masonry Chamber 60x60x75 cm inside, in brick work in cement mortar 1:4 (1 cement : 4 coarse sand) for sluice valve, with C.I. surface box 100mm top diameter, 160 mm bottom diameter and 180 mm deep ( inside) with chained lid and RCC top slab 1:2:4 mix (1 cement : 2 coarse sand : 4 graded stone aggregate 20mm nominal size ) , i/c necessary excavation, foundation concrete 1:5:10 (1 cement : 5 fine sand : 10 graded stone aggregate 40 mm nominal size) and inside plastering with cement mortar 1:3 (1 cement : 3 coarse sand) 12 mm	Each	<b>3</b>		

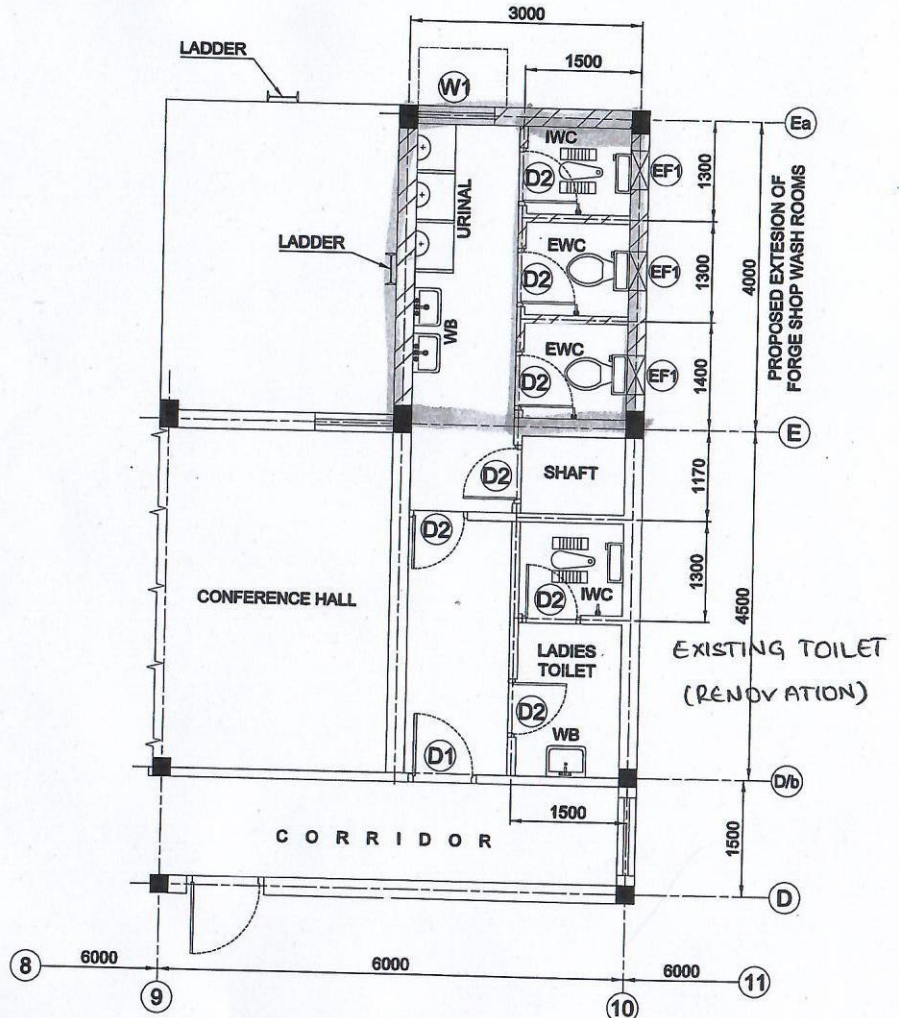
	thick, finished with a floating coat of neat cement complete as per standard design : With common burnt clay F.P.S.(non modular) bricks of class designation 7.5				
61	Providing & construction of soak pit by making use of 6 feet dia pre-cast concrete circular ring upto a depth of 6 feet 10 inches below ground level. The cost of excavation, lowering pre-cast concrete ring, joining of ring joint with rich mortar (1:3). Also the cost includes making hole (2no's) for inserting discharge pipe from 2 toilets of the building. The cost of providing fixing pre-cast slab over the chamber (minimum 2 inches thick). The cost of reinforcement (minimum 8mm dia @ 150C/c in both the directions), centering, curing, fixing complete shall be included. The slab shall be provided with handles for lifting arrangement. The cost also includes supplying & filling chamber with 10kgs charcoal + 10kgs rock salt complete.	Each	3		
62	Supply of labours				
	a. Skilled	Each	40		
	b. Un-skilled	Each	50		
		<b>Total Amount</b>			



**GROUND FLOOR PLAN**

- OPENINGS**
- DOORS :-**  
 D1 : 900 x 2100 - 01 No  
 D2 : 750 x 2100 - 09 No's
- WINDOWS :-**  
 W1 : 1000 x 1500 - 02 No's
- EXHAUST FAN:-**  
 EF1 : 300 x 300 - 03 No's

THIS DRAWING IS THE PROPERTY OF M/s MISHRA DHATU NIGAM LTD, AND SHOULD NOT BE GIVEN OR HANDED OVER OR DIVULGED TO ANY OTHER PERSON WITHOUT THE EXPRESS PERMISSION



**FIRST FLOOR PLAN**

- OPENINGS**
- DOORS :-**  
 D1 : 900 x 2100 - 01 No  
 D2 : 750 x 2100 - 07 No's
- WINDOWS :-**  
 W1 : 1000 x 1500 - 01 No
- EXHAUST FAN:-**  
 EF1 : 300 x 300 - 03 No's

**NOTE:**  
 1. ALL DIMENSIONS ARE IN mm. U.O.S.  
 2. REMOVE BURRS & SHARP CORNERS  
 3. FREE MEASURE TOLERANCE SHOULD BE

Sl.No.	DRG. No.	DESCRIPTION	MATERIAL	No. OFF	PER POE	TOTAL	REMARKS	
EQPT. :-		DEPT. : FORGE SHOP						TOTAL Wt. kg :-
W.O.No. : 24-1-045								
DESIGNED	NAME	DATE	 <b>Mishra Dhatu Nigam Ltd</b> SUPER ALLOYS PLANT HYDERABAD					SUPERSEDES
DRAWN	VAMSHI	23-03-24						
CHECKED								
APPROVED								
FINISH ∇ IF NOT SHOWN		SURFACE FINISH IN um AS PER IS:886 - 1972						SUPERSEDED BY